

マンモグラフィ・乳房超音波診断の基本： ガイドラインの改訂をふまえて

症例提示編

兵庫県立がんセンター 乳腺外科
広利 浩一

khirokaga@hyogo-cc.jp





症例1 70歳台 MG検診異常

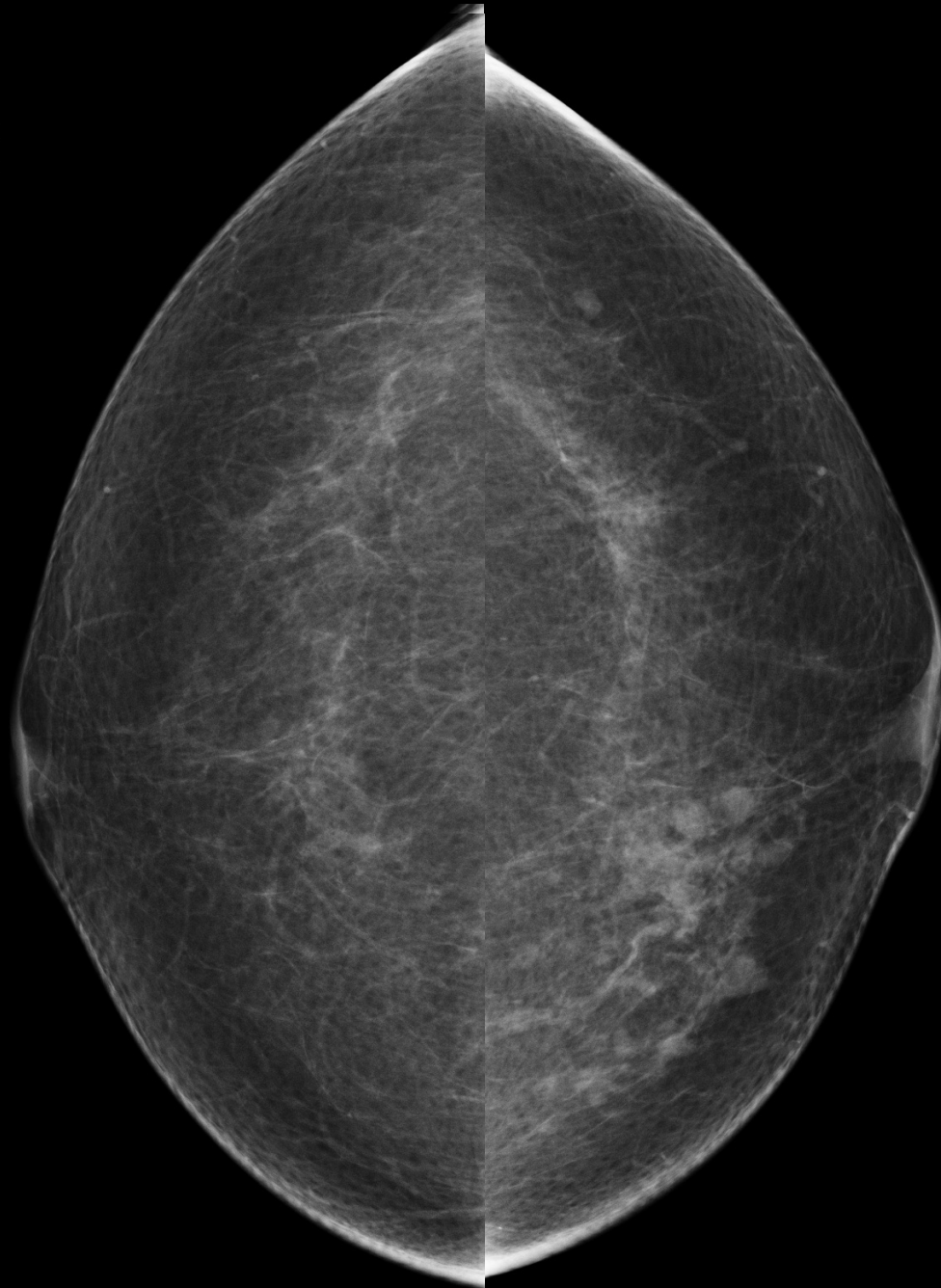
- ・ 既往歴 特記すべきことなし
- ・ 家族歴 特記すべきことなし

[A
Y] RMLO]

[A
Y] LMLO]

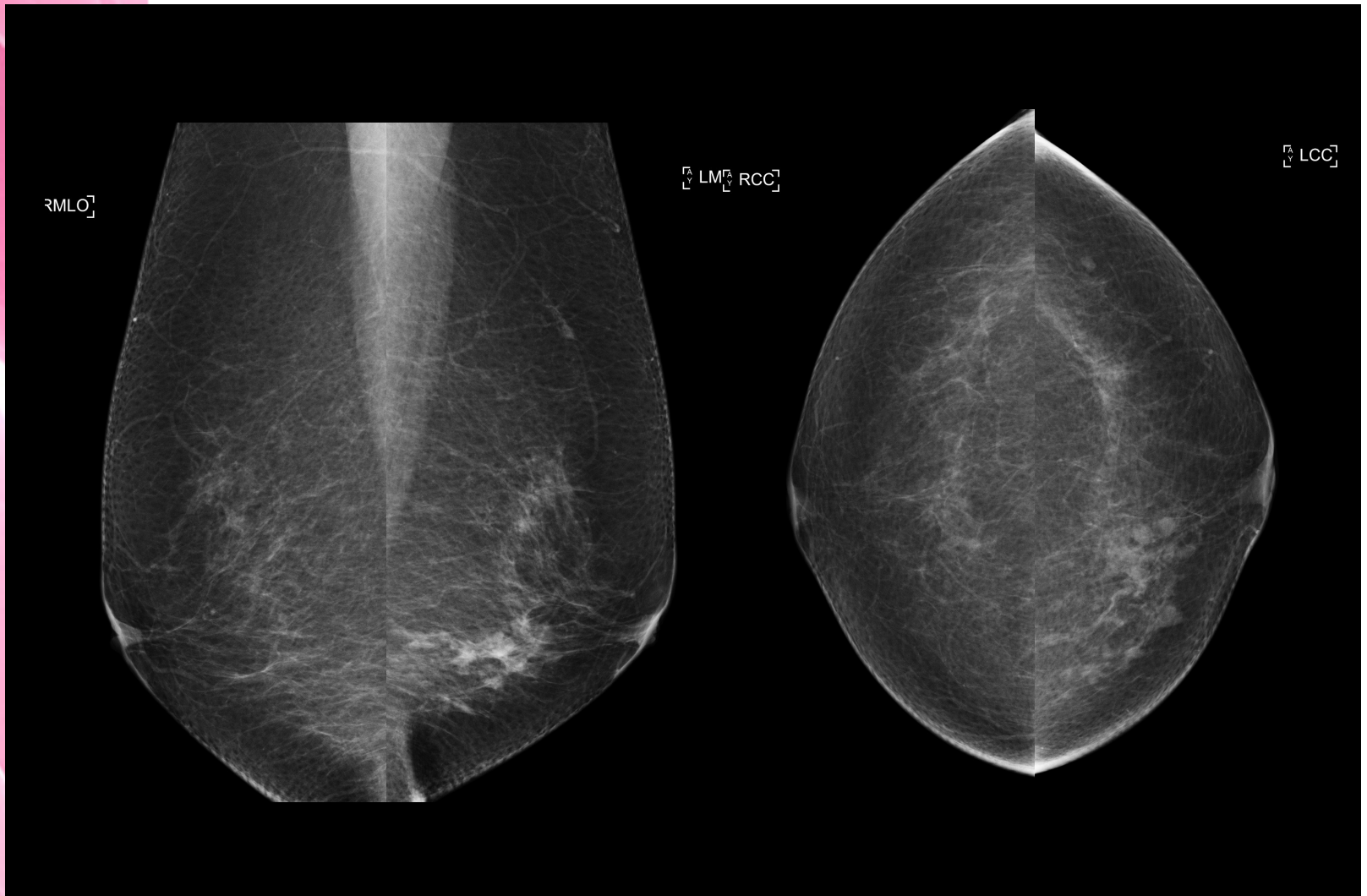


[A
Y] RCC



[A
Y] LCC

Q1-1. マンモグラフィの所見, カテゴリーは？



Precision+ A Pure+ T

Lt Nipple



◇ 0
MI
(1.2)
◇ i18LX5
d16.5
35 fps
Qscan
G:79
◇ 1 DR:65
A:4
P:1

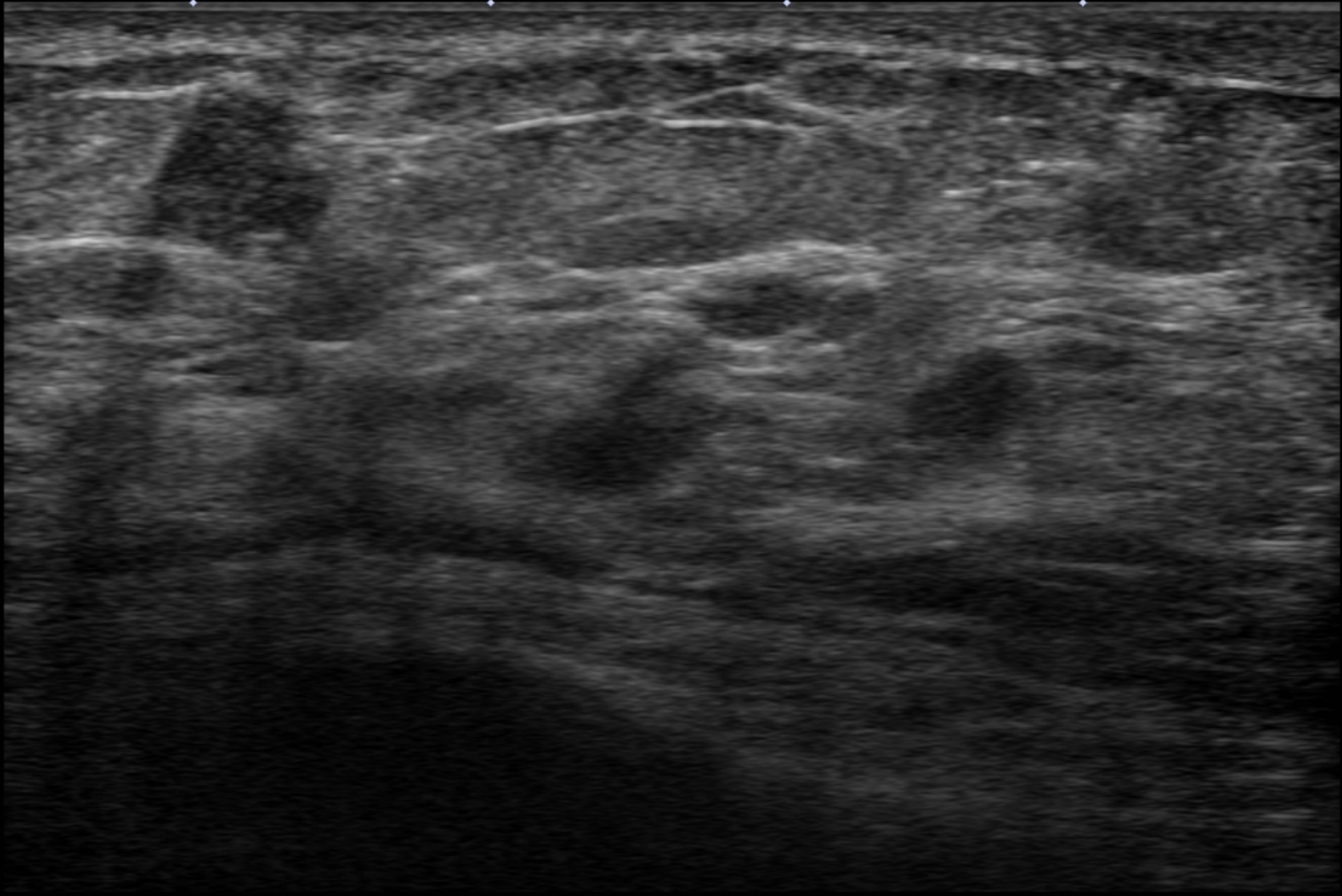
◇ 2

◇ 3



511

Precision+ A Pure+ T



◇ 0
MI
(1.2)
◇ i18LX5
d16.5
35 fps
Qscan
G:80
◇ 1 DR:65
A:4
P:1

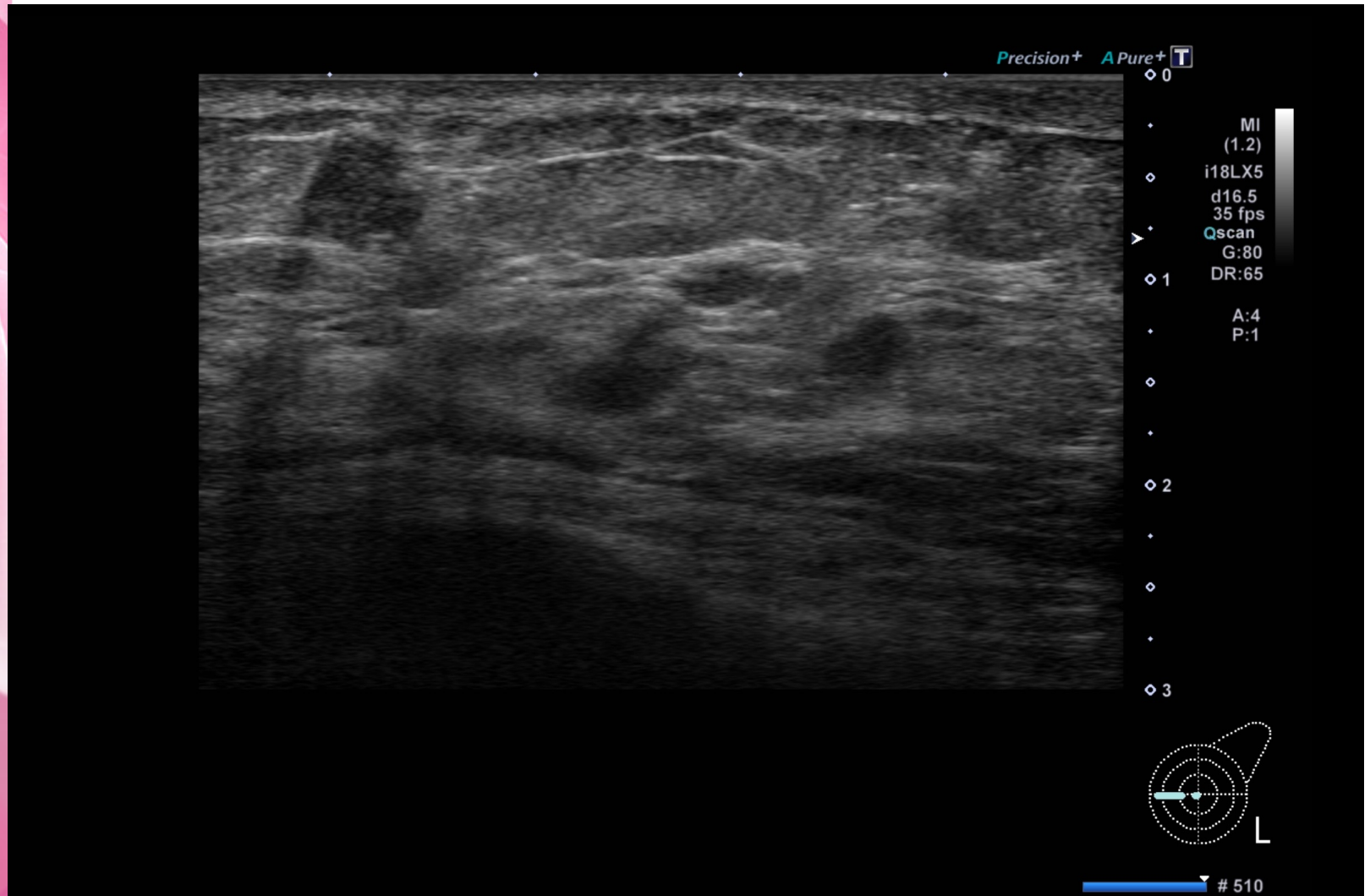
◇ 2

◇ 3




510

Q1-2. 乳房超音波検査の 所見, カテゴリーは？

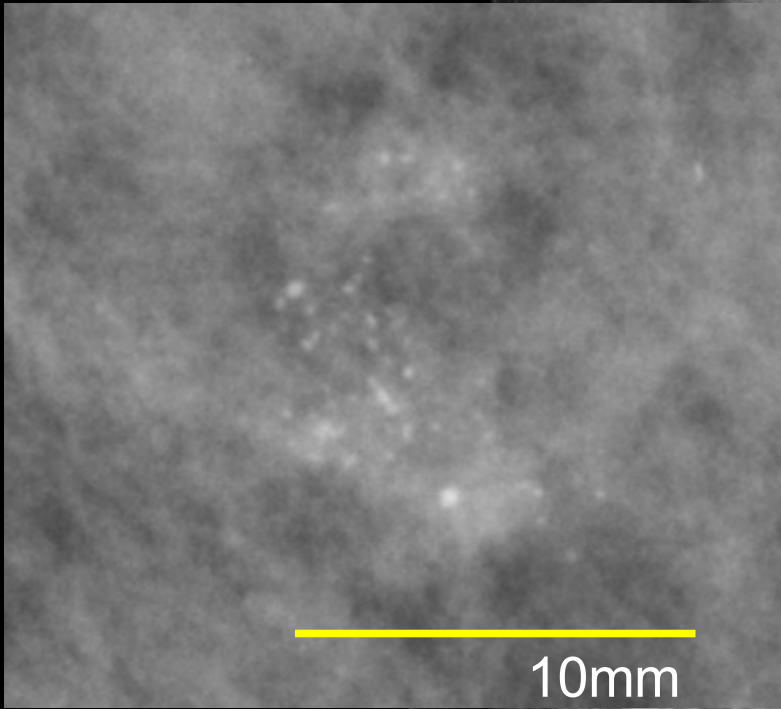




A vertical decorative graphic on the left side of the slide, featuring abstract, flowing, and layered pink and magenta shapes that create a sense of depth and movement.

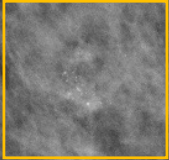
症例2 60歳台 MG検診異常

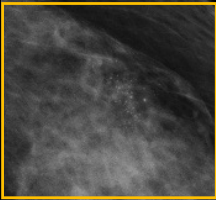
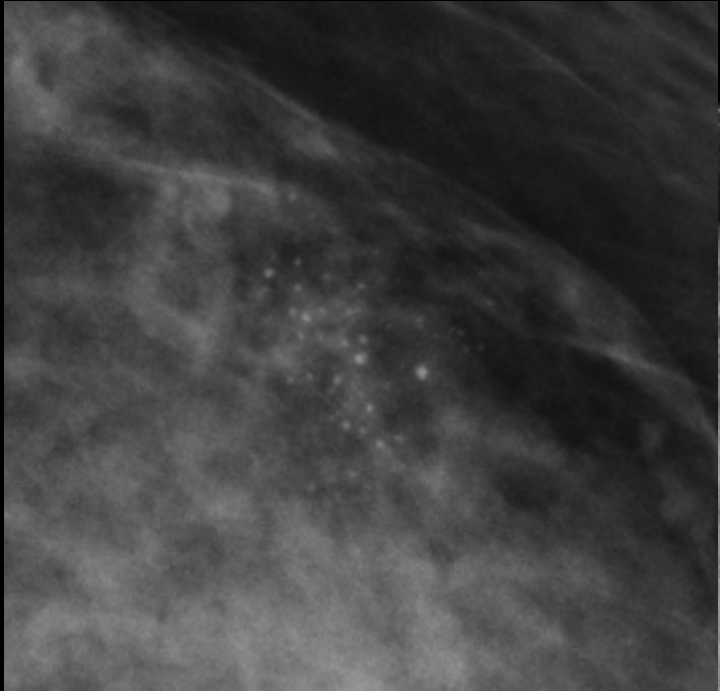
- ・ 既往歴 特記すべきことなし
- ・ 家族歴 特記すべきことなし



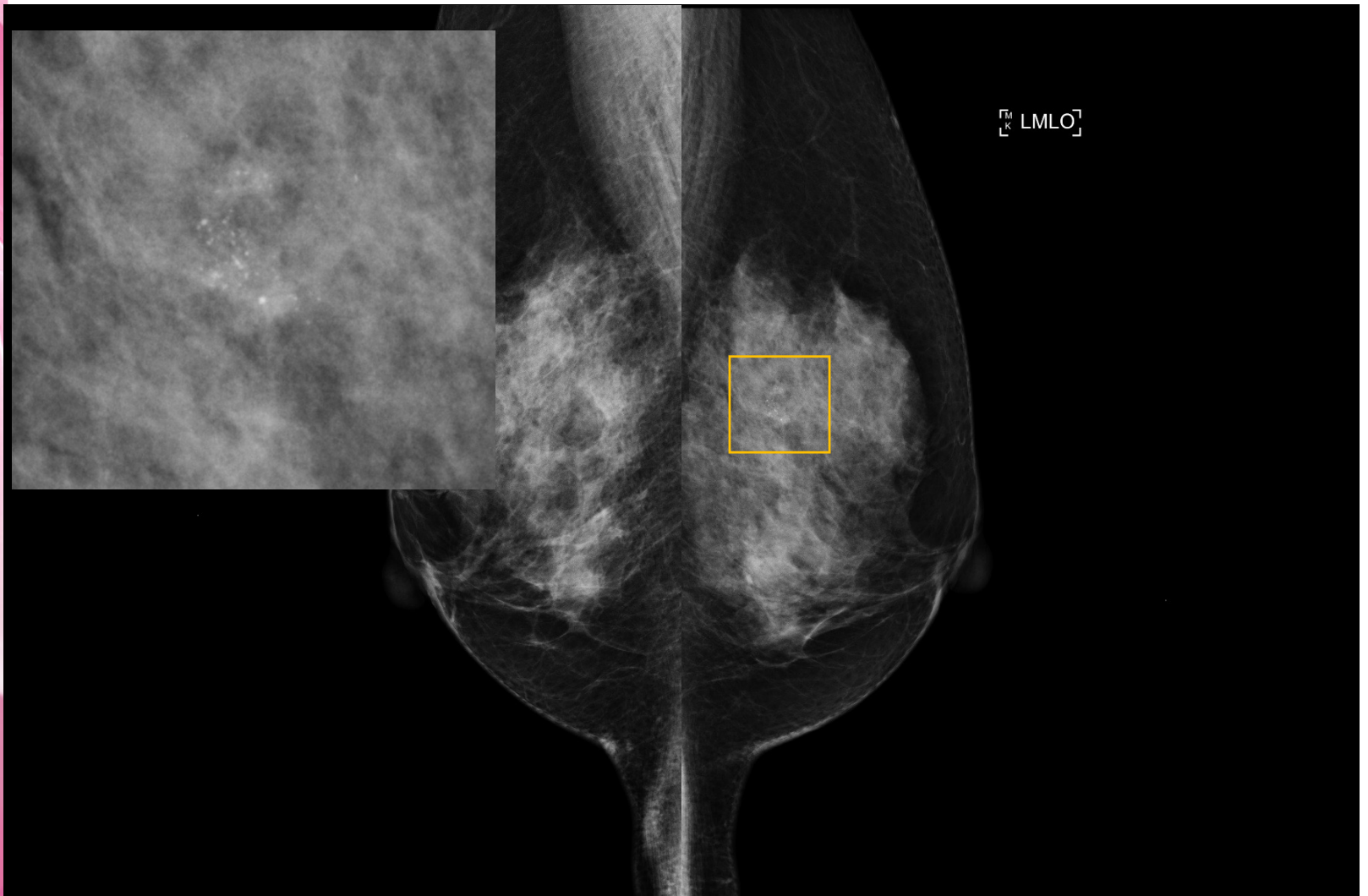
10mm

$\begin{bmatrix} M \\ K \end{bmatrix}$ LMLO

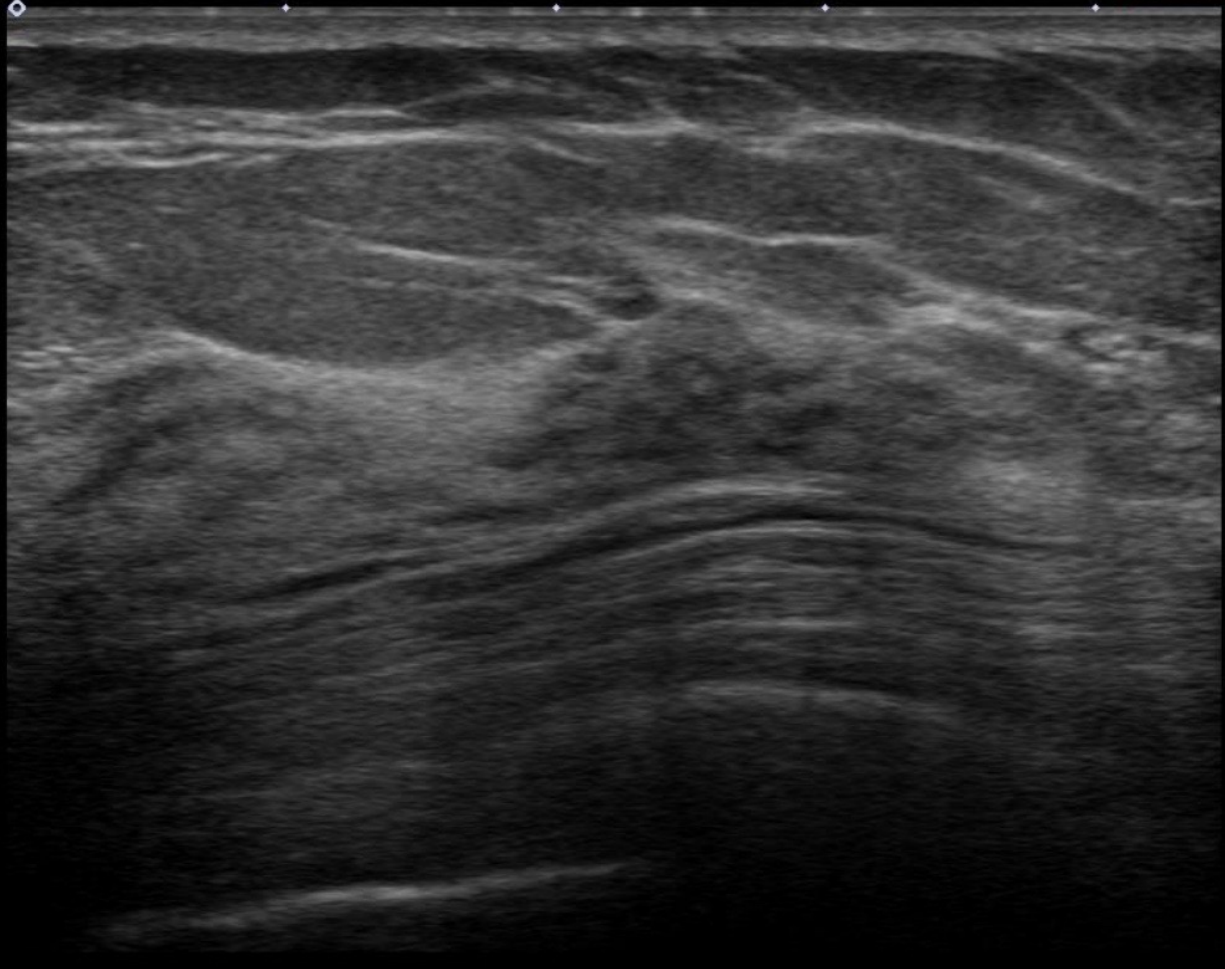




Q2-1. マンモグラフィの所見, カテゴリーは？



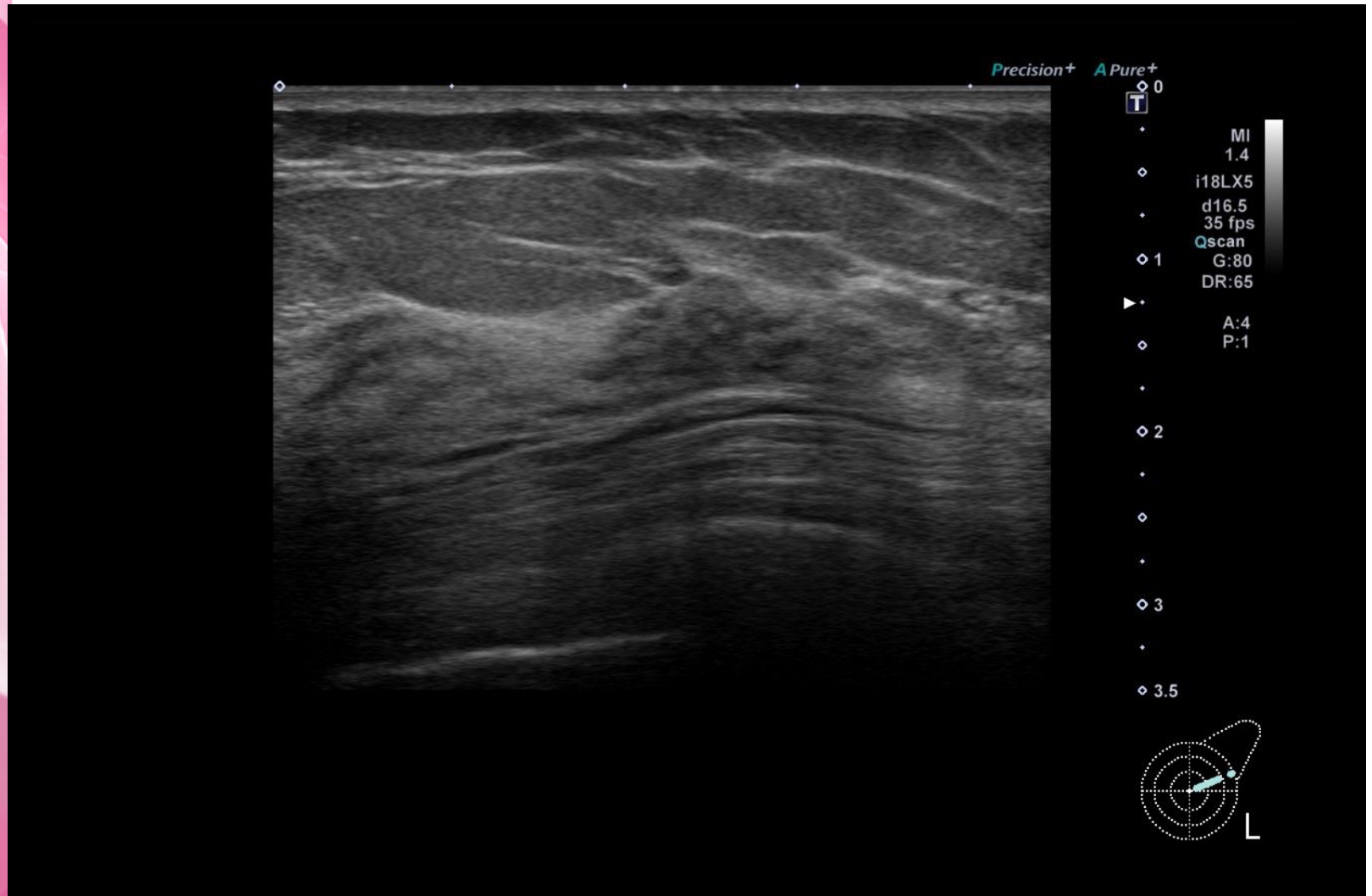
Precision+ APure+



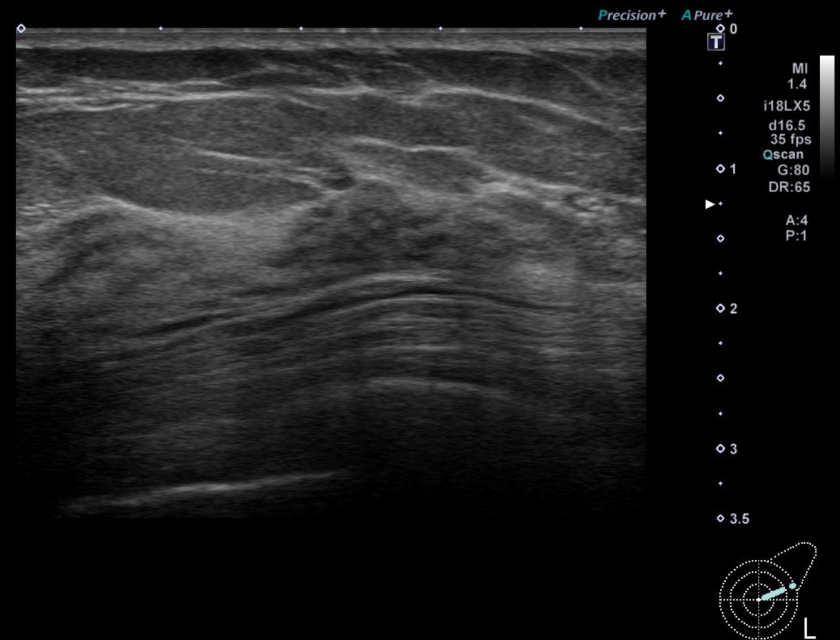
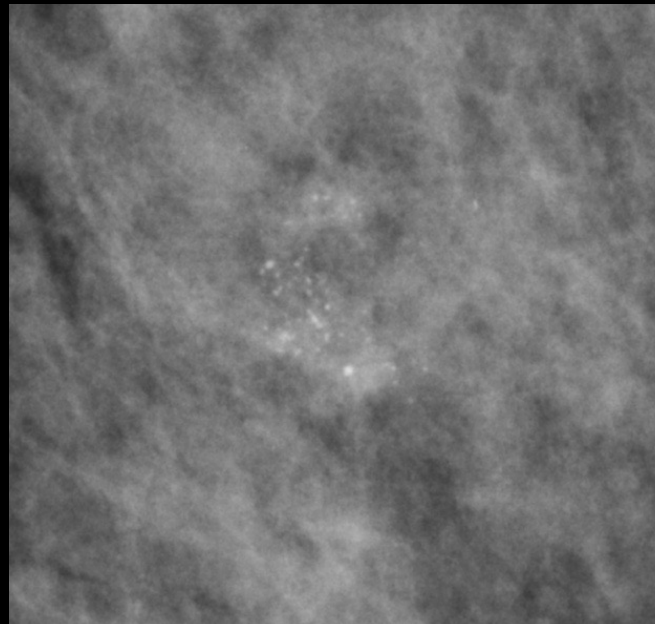
0
T
MI
1.4
i18LX5
d16.5
35 fps
Qscan
G:80
DR:65
A:4
P:1



Q2-2. 乳房超音波検査の 所見, カテゴリーは？



Q2-3. 經過觀察 or 追加検査？







症例3 60歳台 左乳房腫瘍自覚

- ・ 既往歴 特記すべきことなし
- ・ 家族歴 特記すべきことなし
- ・ 身体所見 左D区域(NTD=30mm)に25mm大腫瘍触知

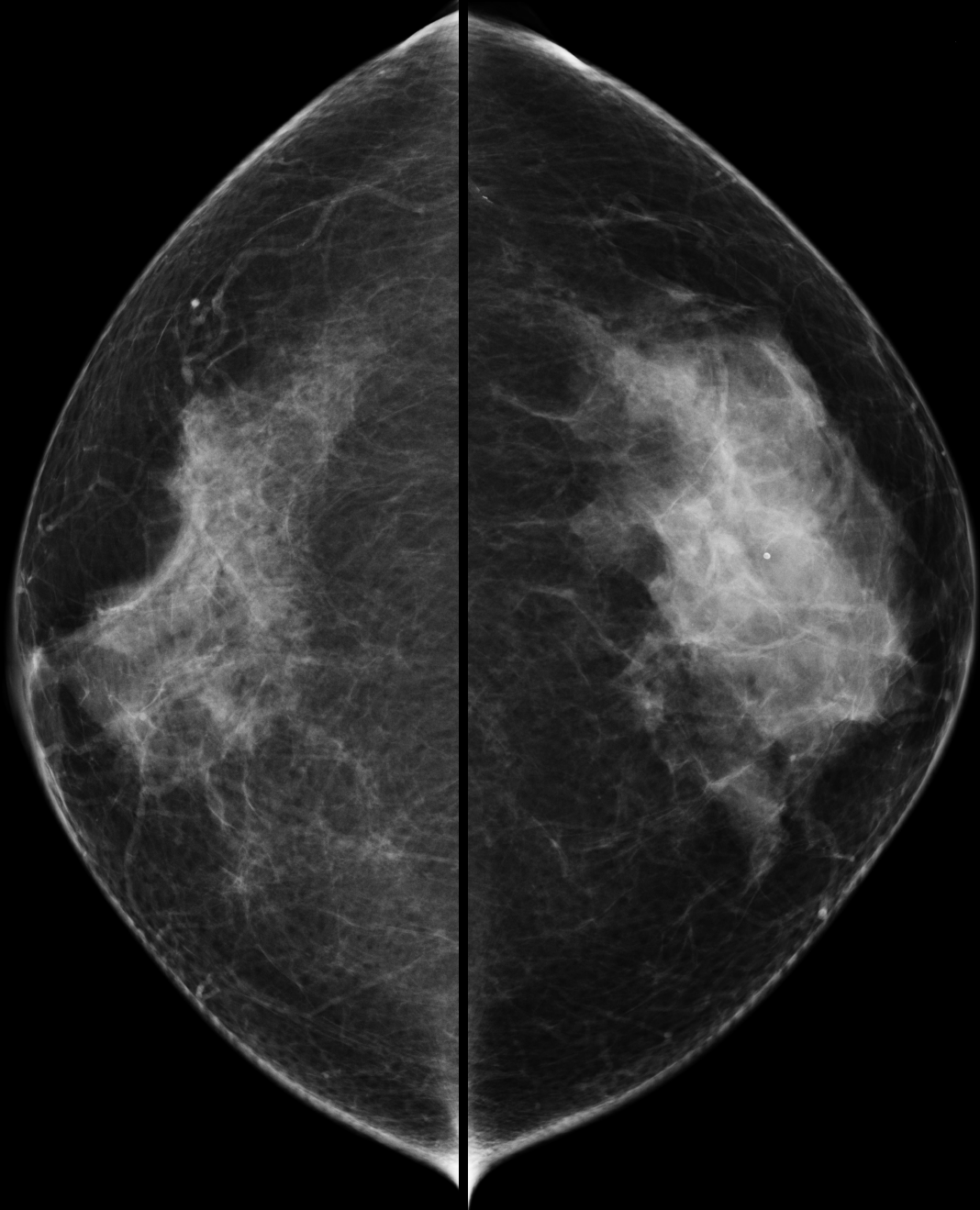
RMLO

LMLO

28.0 kV
127.700 mAs
1.29 mGy
148 N
49 mm
69.9
W/Rh

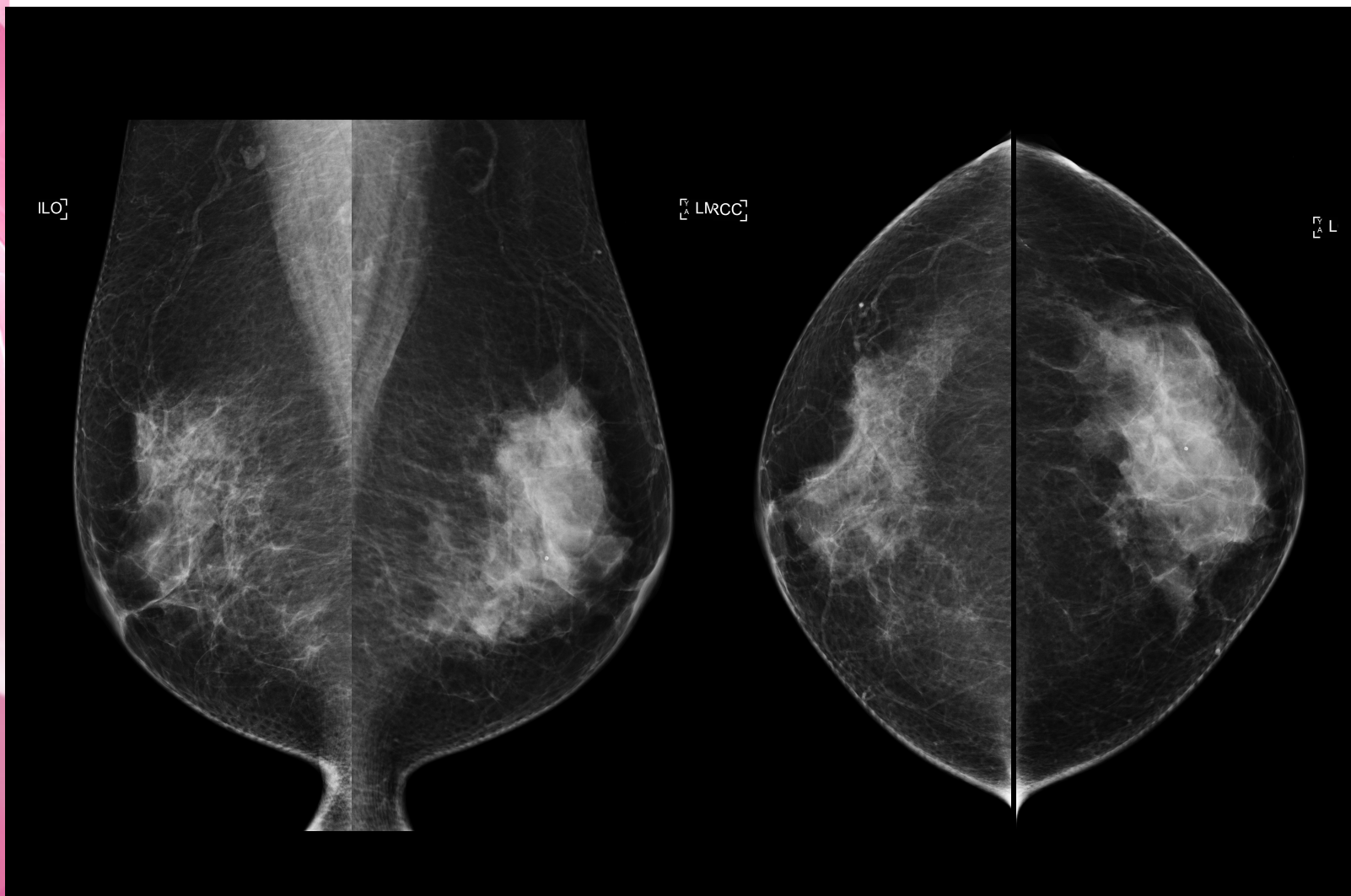
29.0 kV
173.800 mAs
1.90 mGy
167 N
52 mm
69.8
W/Rh

Y
A
RCC



Y
A
LCC

Q3-1. マンモグラフィの所見, カテゴリーは？



Precision A Pure T

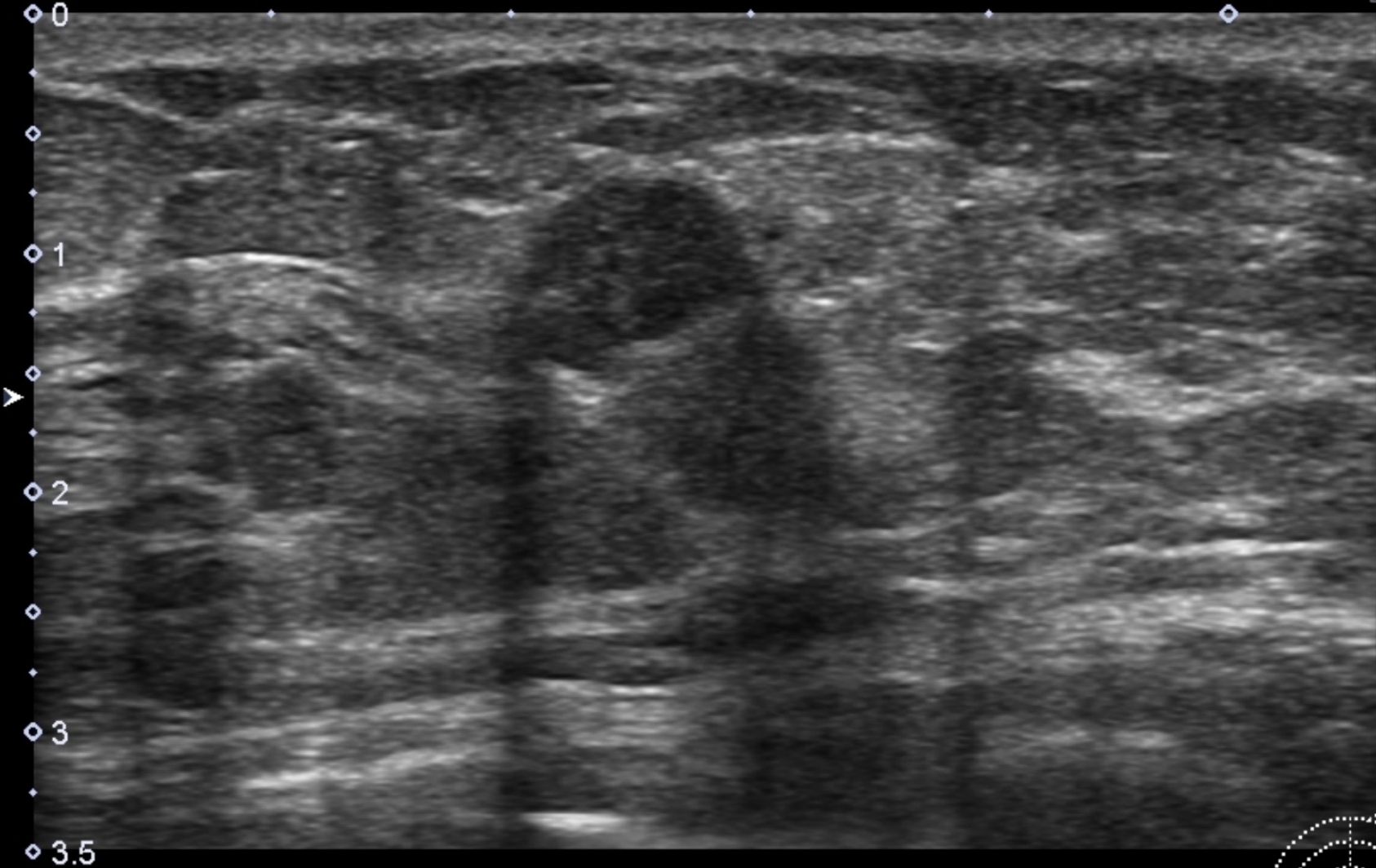
0
1
2
3
3.5

12L5
diffT9.0
21 fps
Qscan
G:91
DR:75
A:2
P:1



38

Precision A Pure T



12L5
diffT9.0
21 fps
Qscan
G:91
DR:75
A:2
P:1



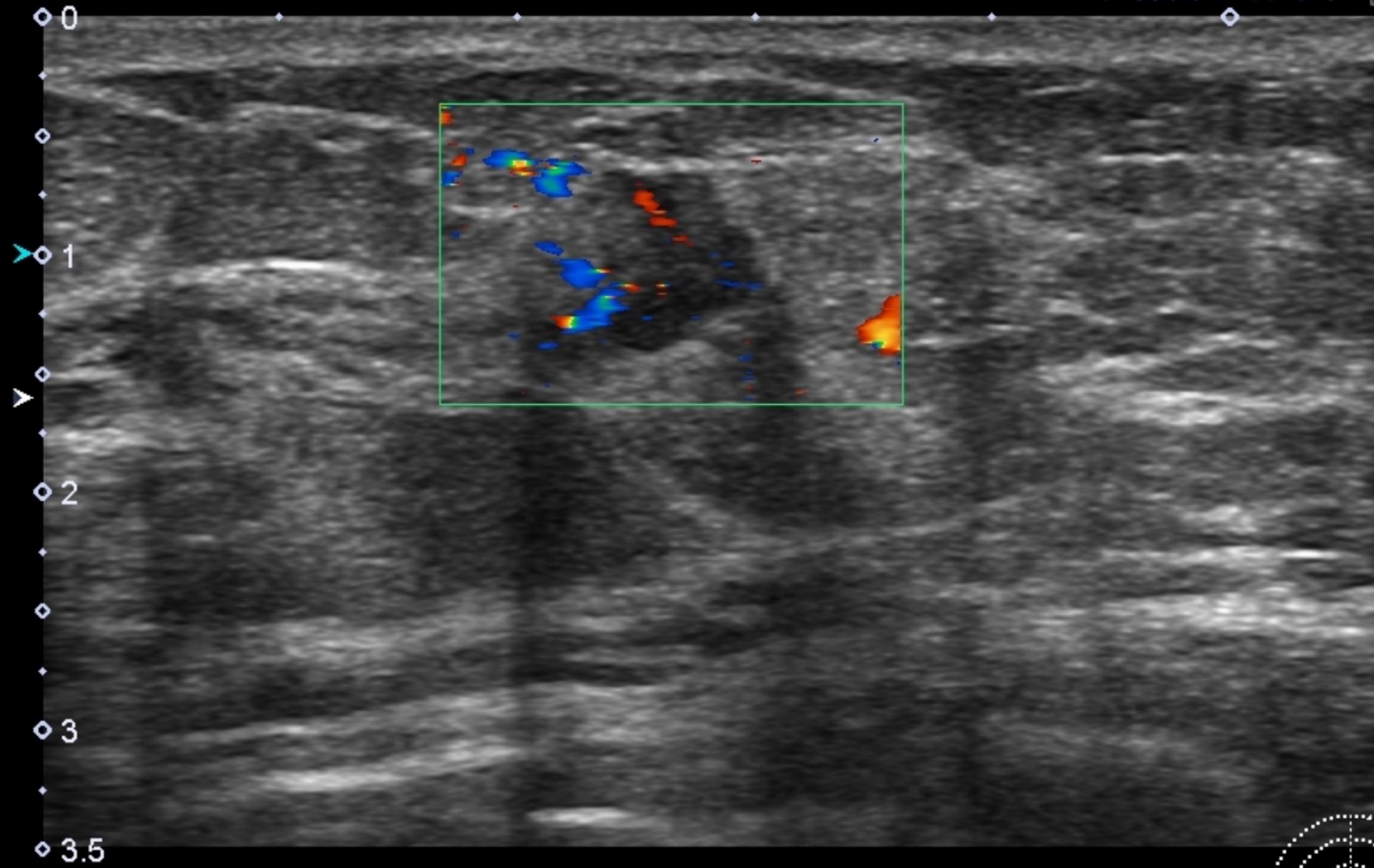
252

2.2



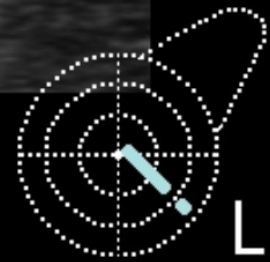
2.2
cm/s

Precision **A Pure**



0
1
2
3
3.5

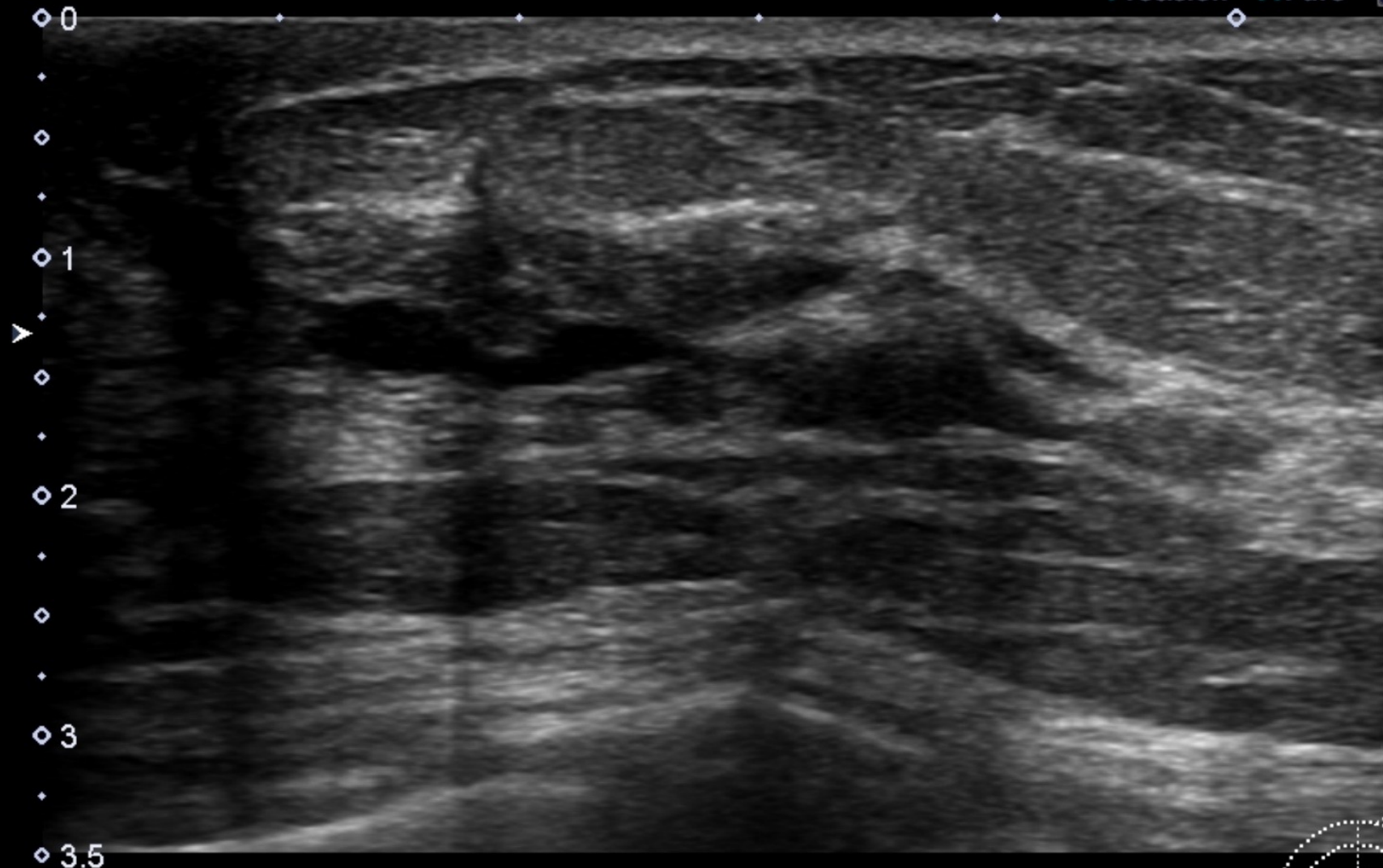
12L5
diffT9.0
10 fps
Qscan
G:91
DR:75
CF 5.3
CG:49
8.9k
F:7



L

86

Precision A Pure

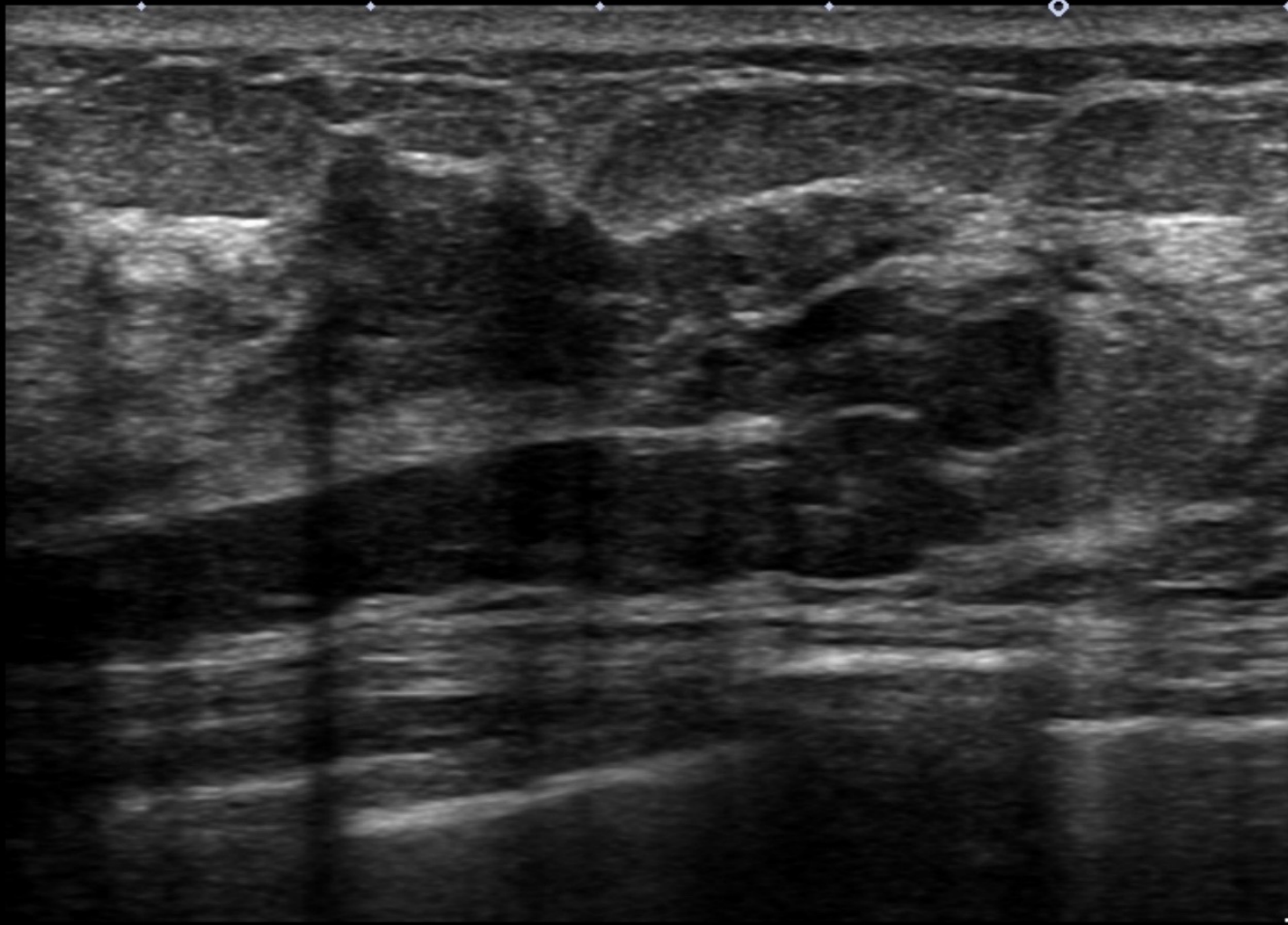


12L5
diffT9.0
21 fps
Qscan
G:89
DR:75
A:2
P:1

733

Precision A Pure

- ◊ 0
-
- ◊
-
- ◊ 1
-
- ◊
- ◊ 2
-
- ◊
-
- ◊ 3
-
- ◊
-
- ◊ 4

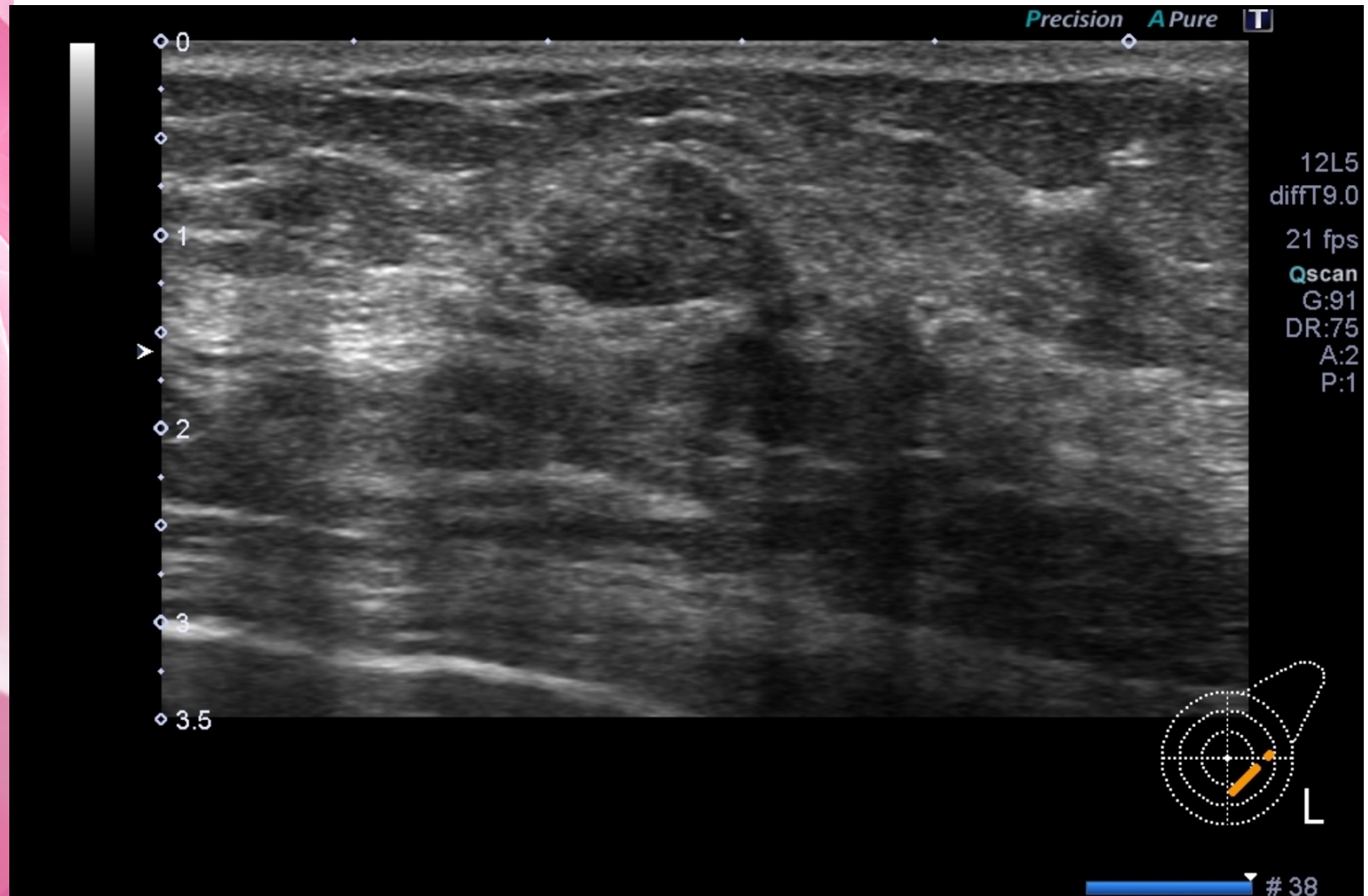


12L5
diffT9.0
21 fps
Qscan
G:87
DR:75
A:2
P:1



643

Q3-2. 乳房超音波検査の 所見, カテゴリーは?







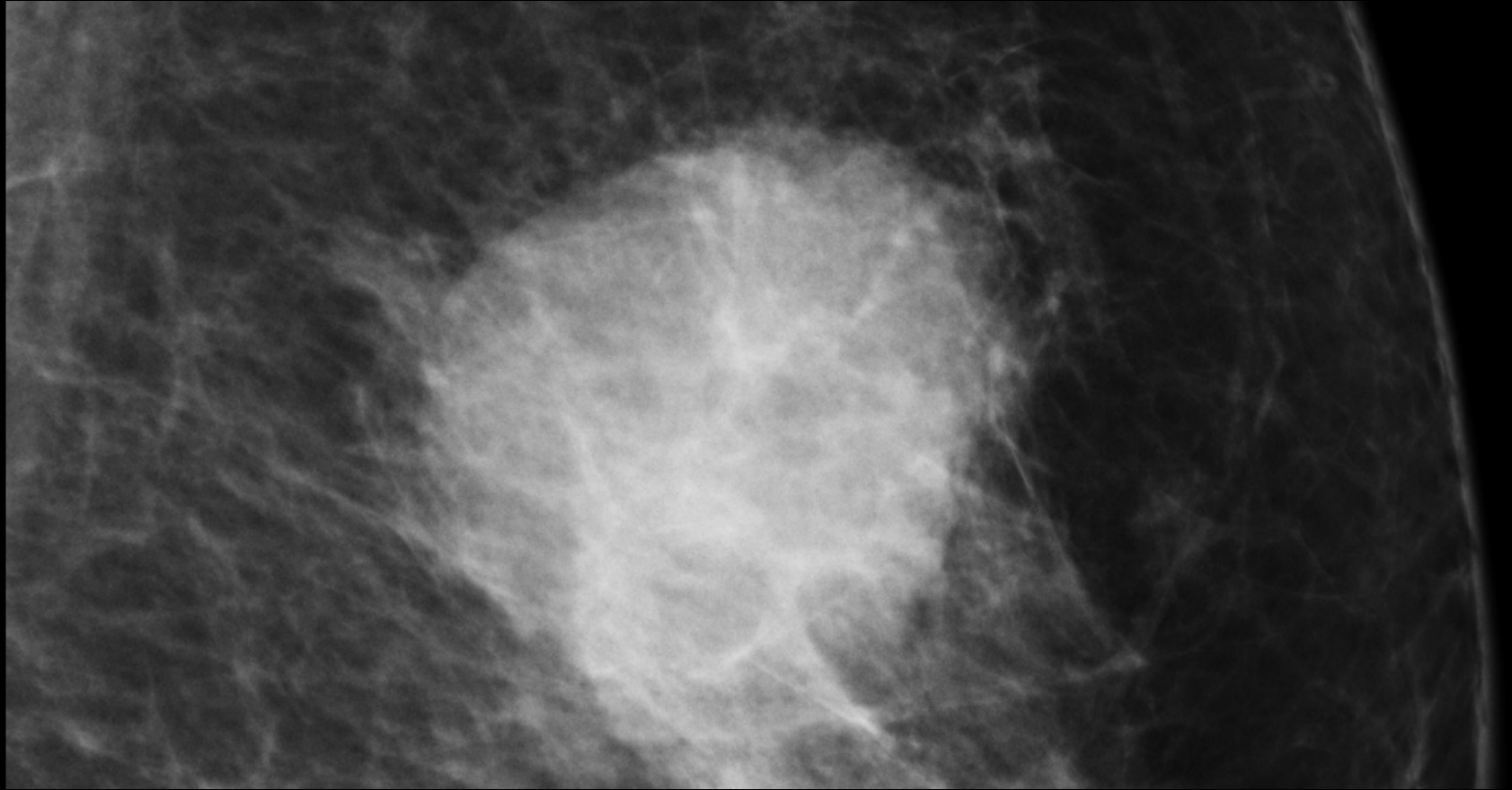
症例4 70歳台 左乳房腫瘤自覚

- ・ 既往歴 60歳台 骨軟部腫瘍
- ・ 家族歴 特記すべきことなし
- ・ 身体所見 左C区域 (NTD=30mm) 30mm大腫瘤触知

[M] RMLO

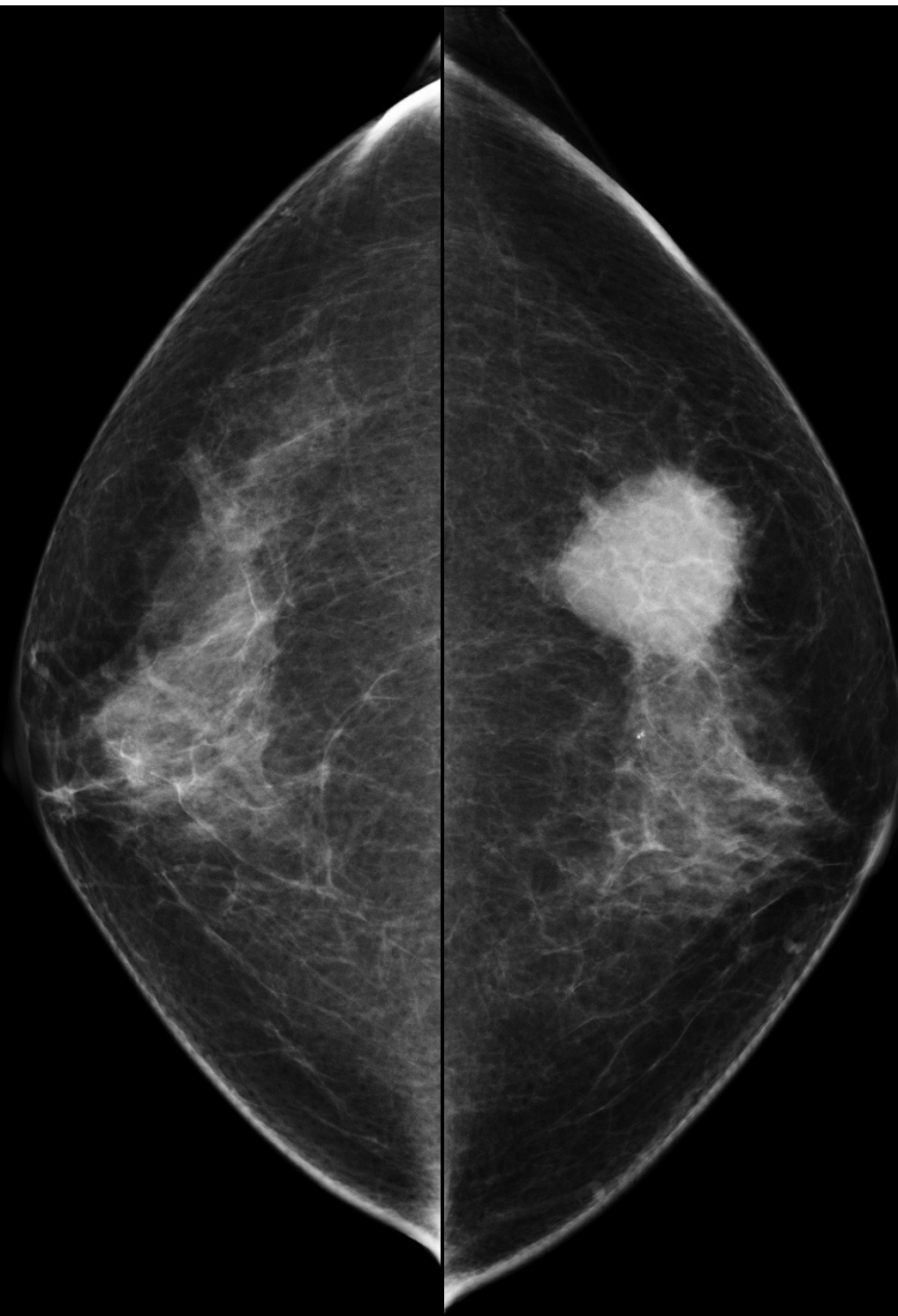
[M] LMLO



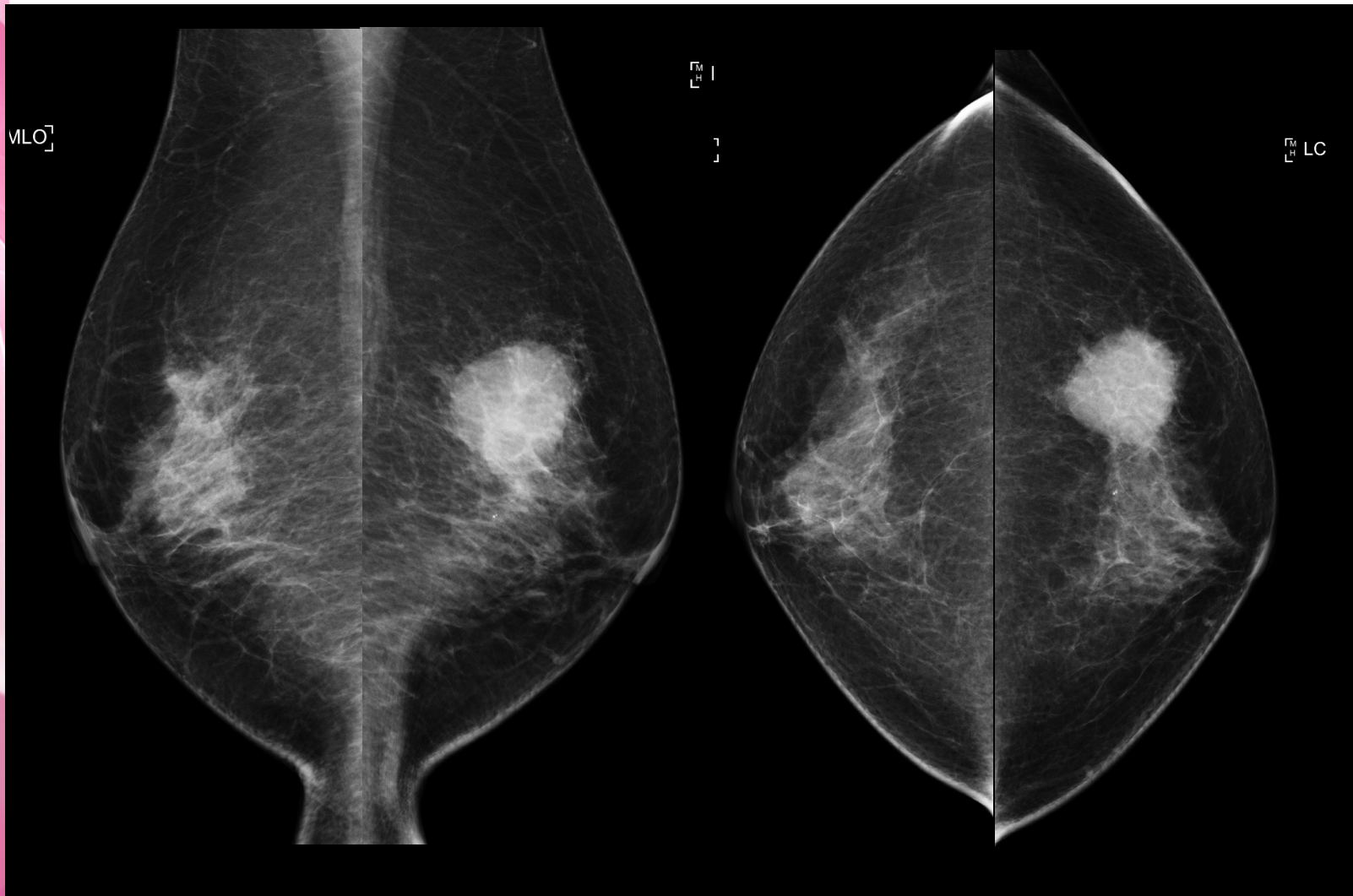


[M
H] RCC

[M
H] LCC



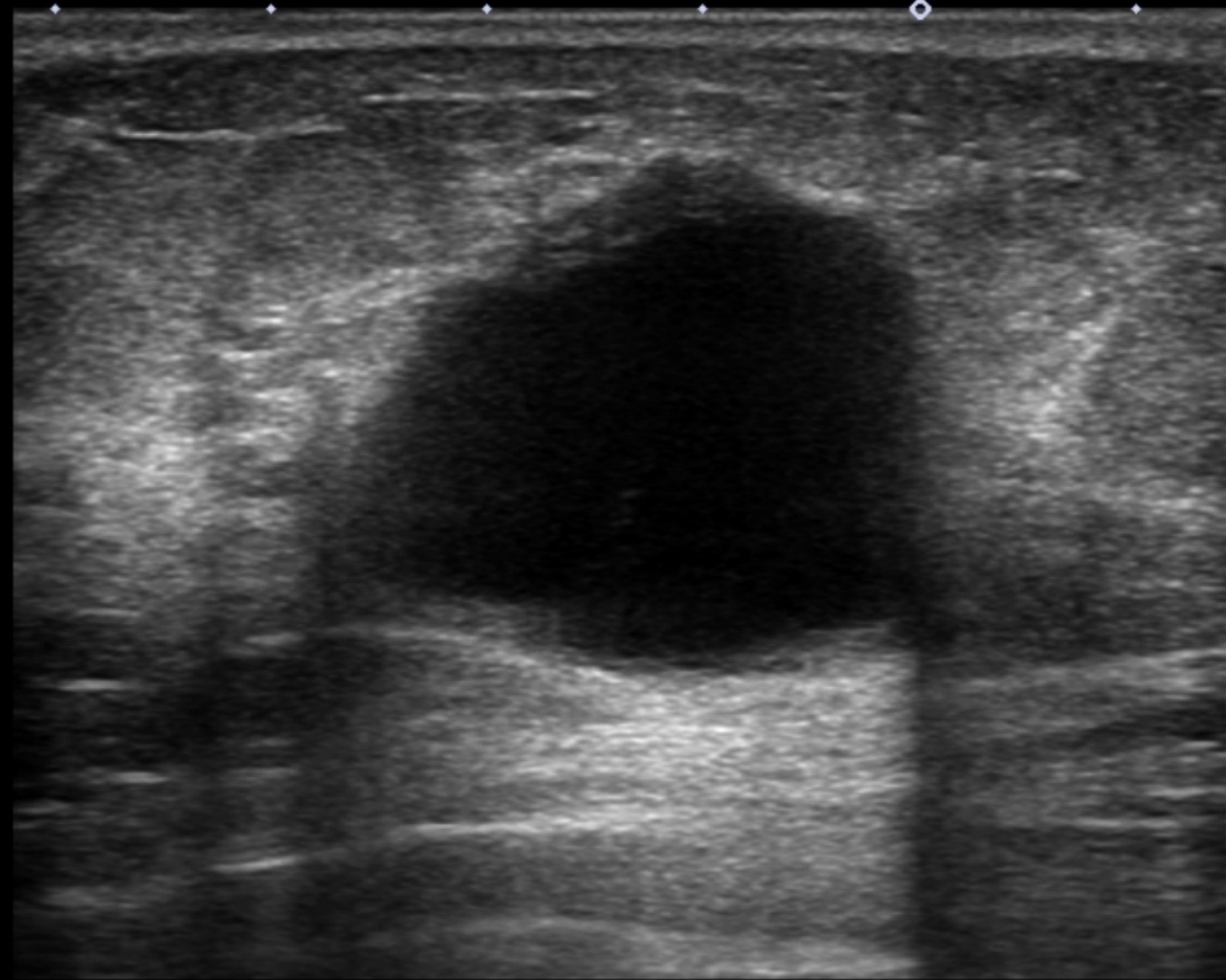
Q4-1. マンモグラフィの所見, カテゴリーは？



Precision A Pure



- ◊ 0
-
- ◊
-
- ◊ 1
-
- ◊
-
- ◊ 2
-
- ◊
-
- ◊ 3
-
- ◊
-
- ◊ 4
-
- ◊ 4.5



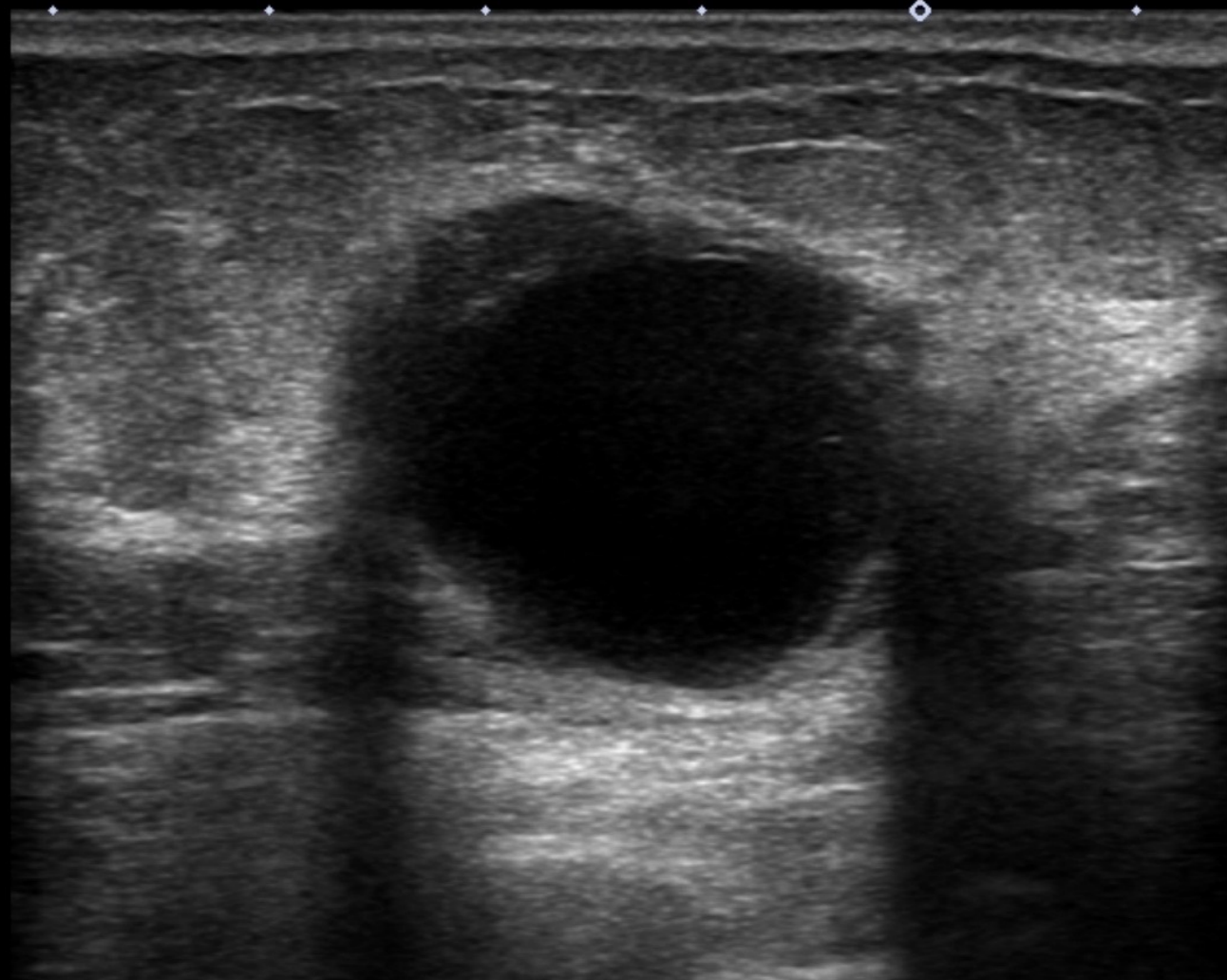
12L5
diffT9.0
20 fps
Qscan
G:89
DR:75
A:2
P:1



215

Precision A Pure

T

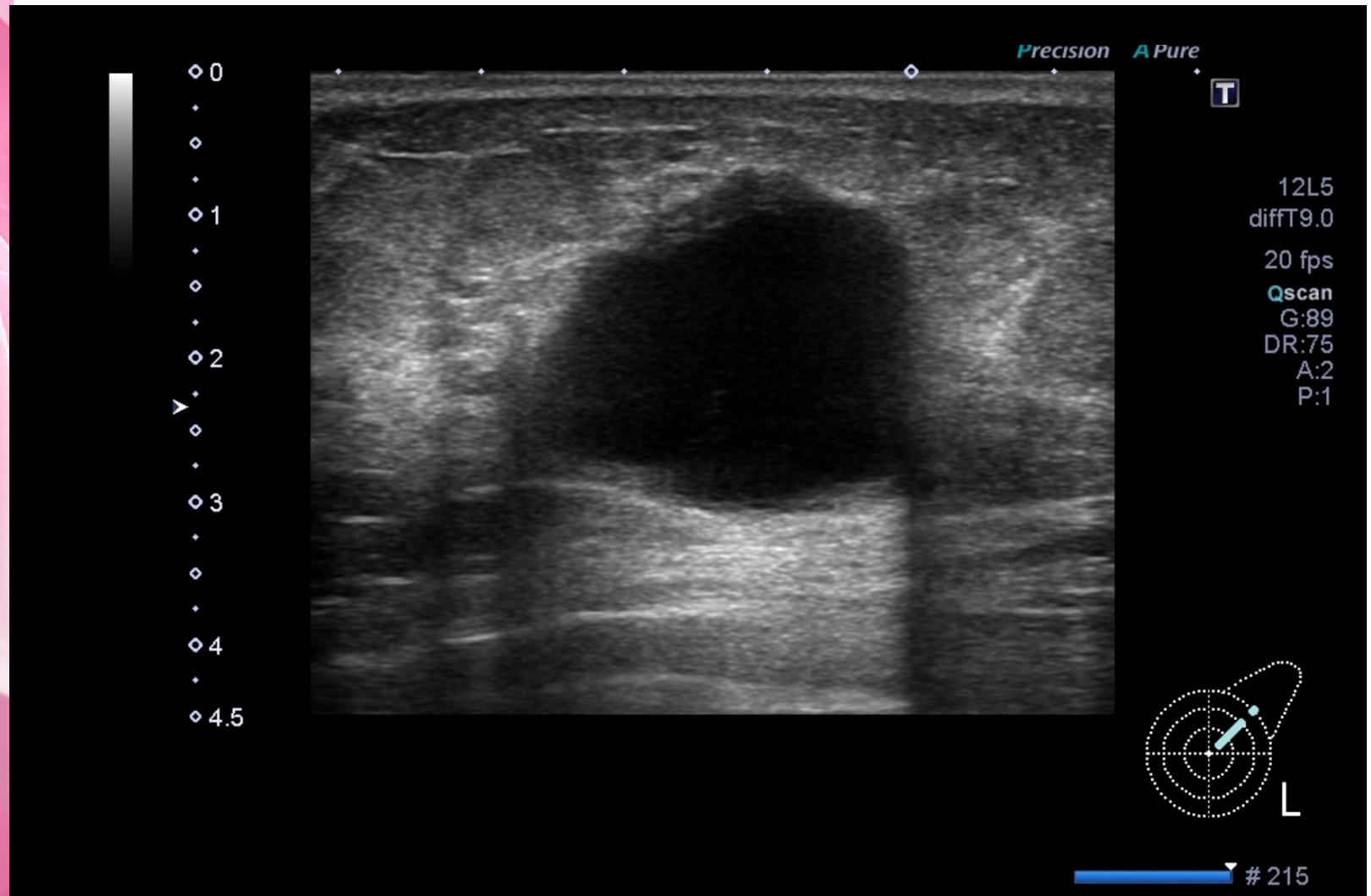


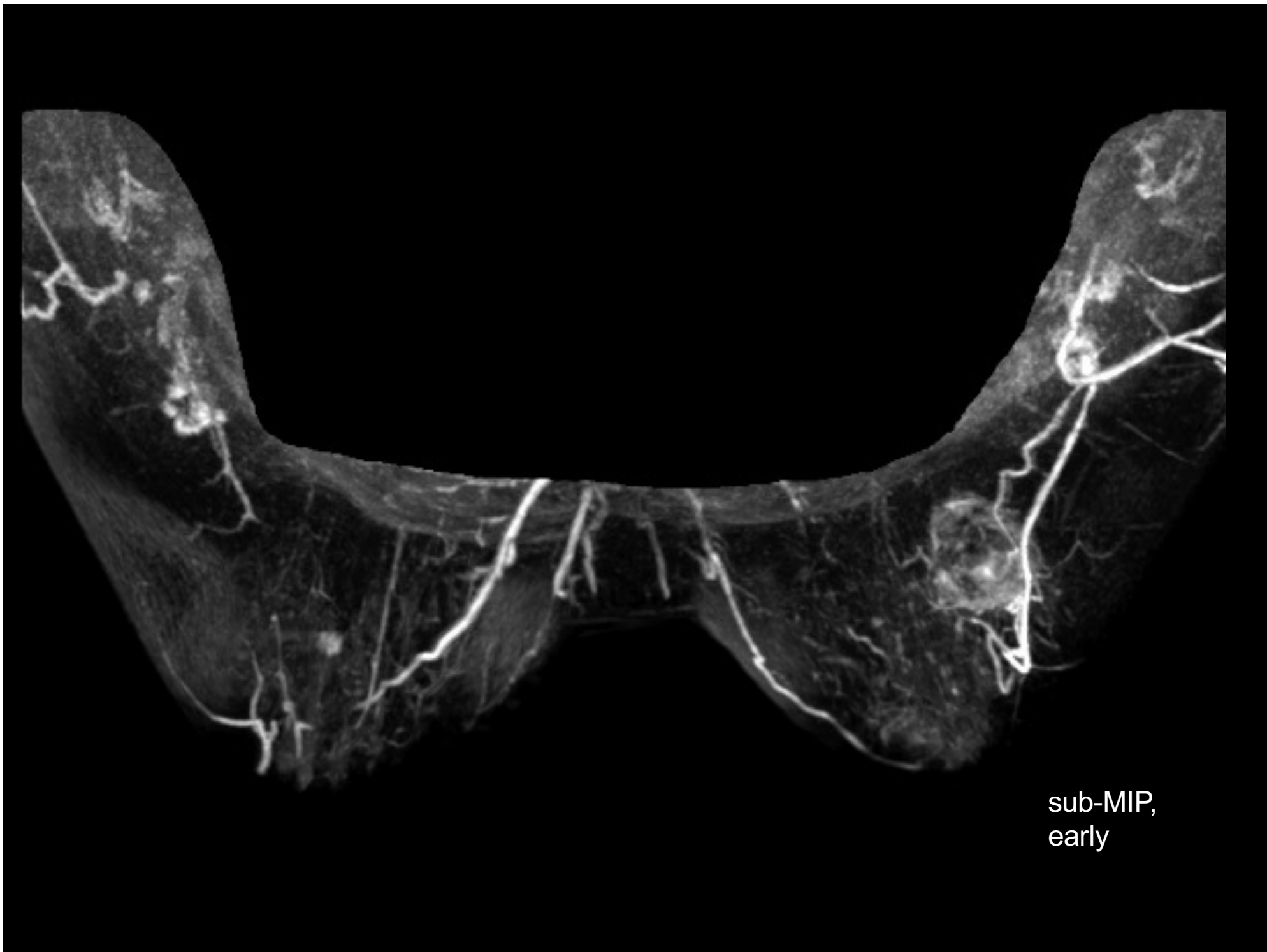
- ◊ 0
- ◊
- ◊
- ◊ 1
- ◊
- ◊
- ◊
- ◊ 2
- ◊
- ◊
- ◊ 3
- ◊
- ◊
- ◊ 4
- ◊
- ◊ 4.5

12L5
diffT9.0
20 fps
Qscan
G:87
DR:75
A:2
P:1

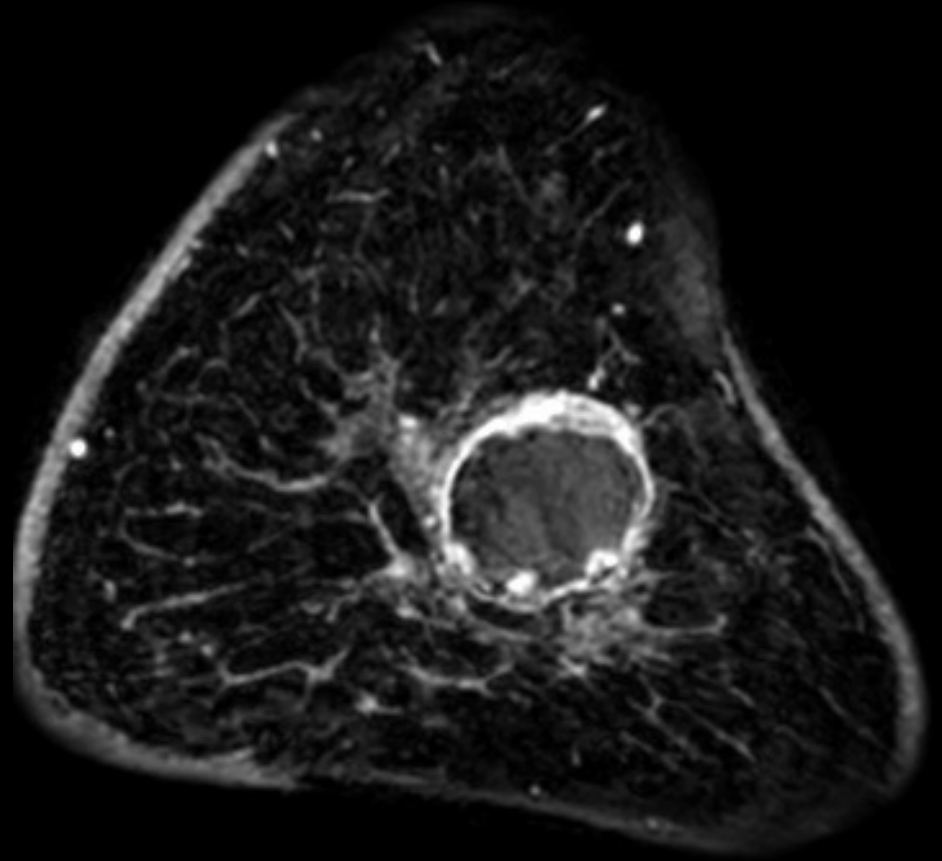
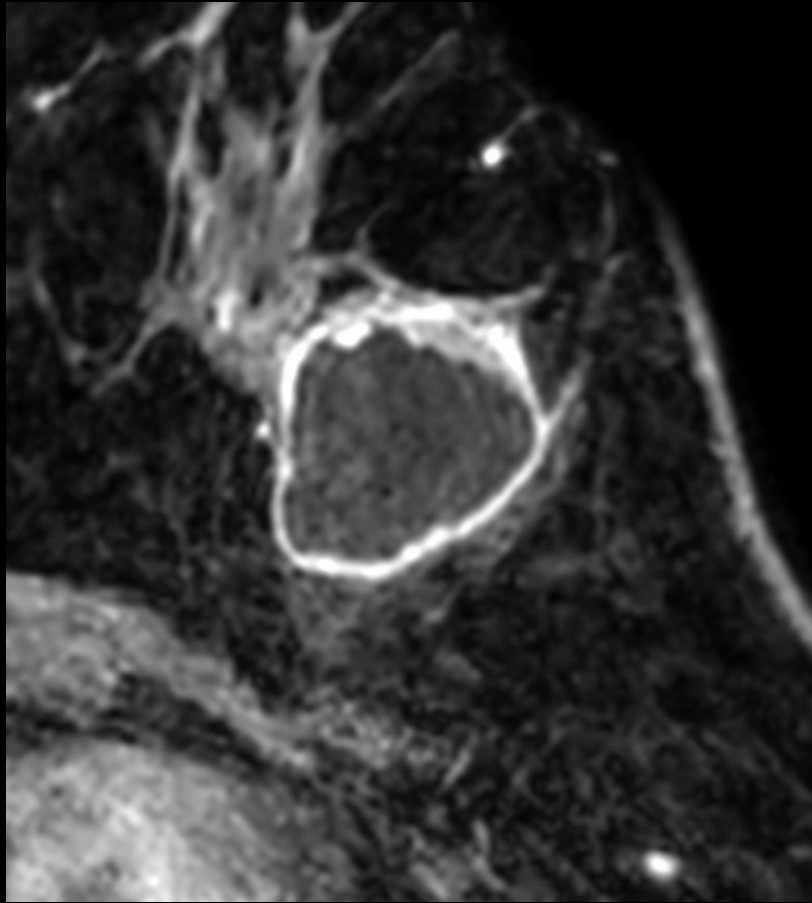


Q4-2. 乳房超音波検査の 所見, カテゴリーは?



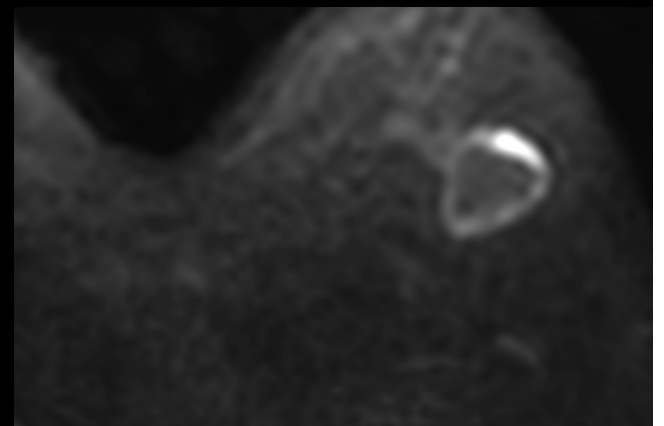
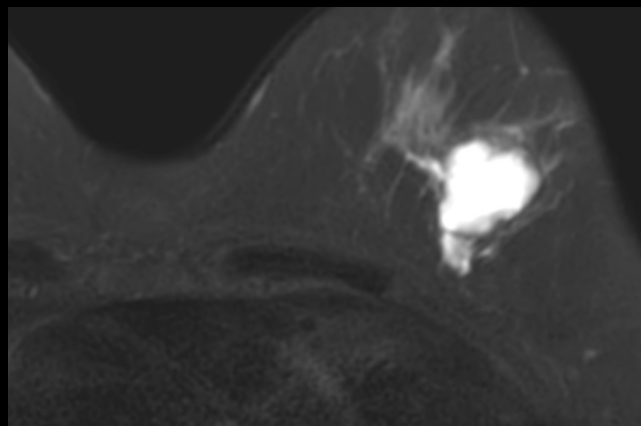
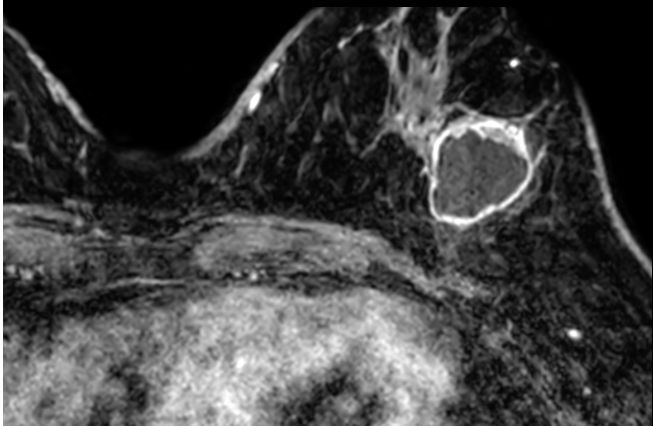
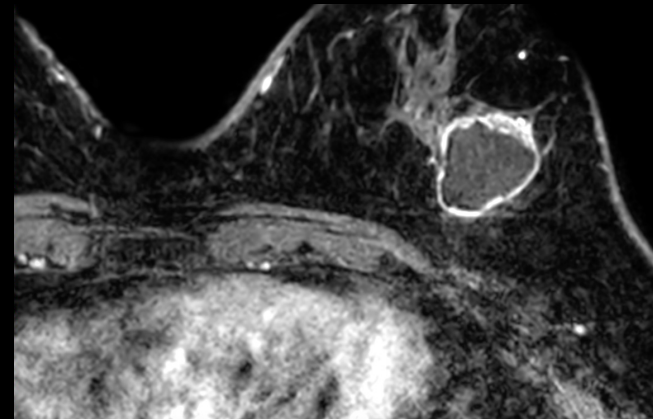
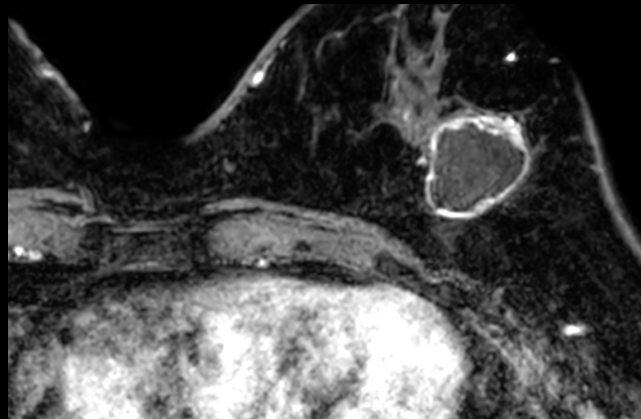
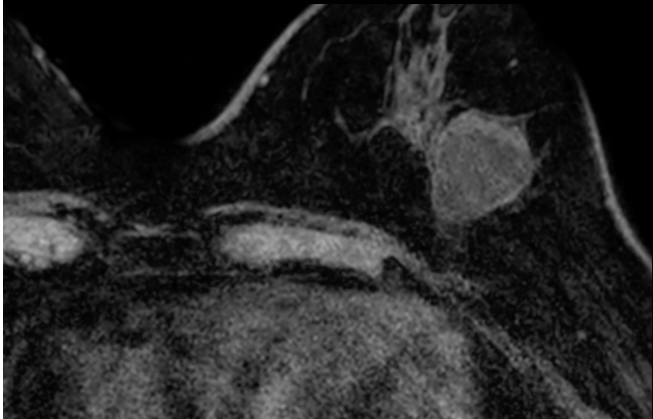


sub-MIP,
early



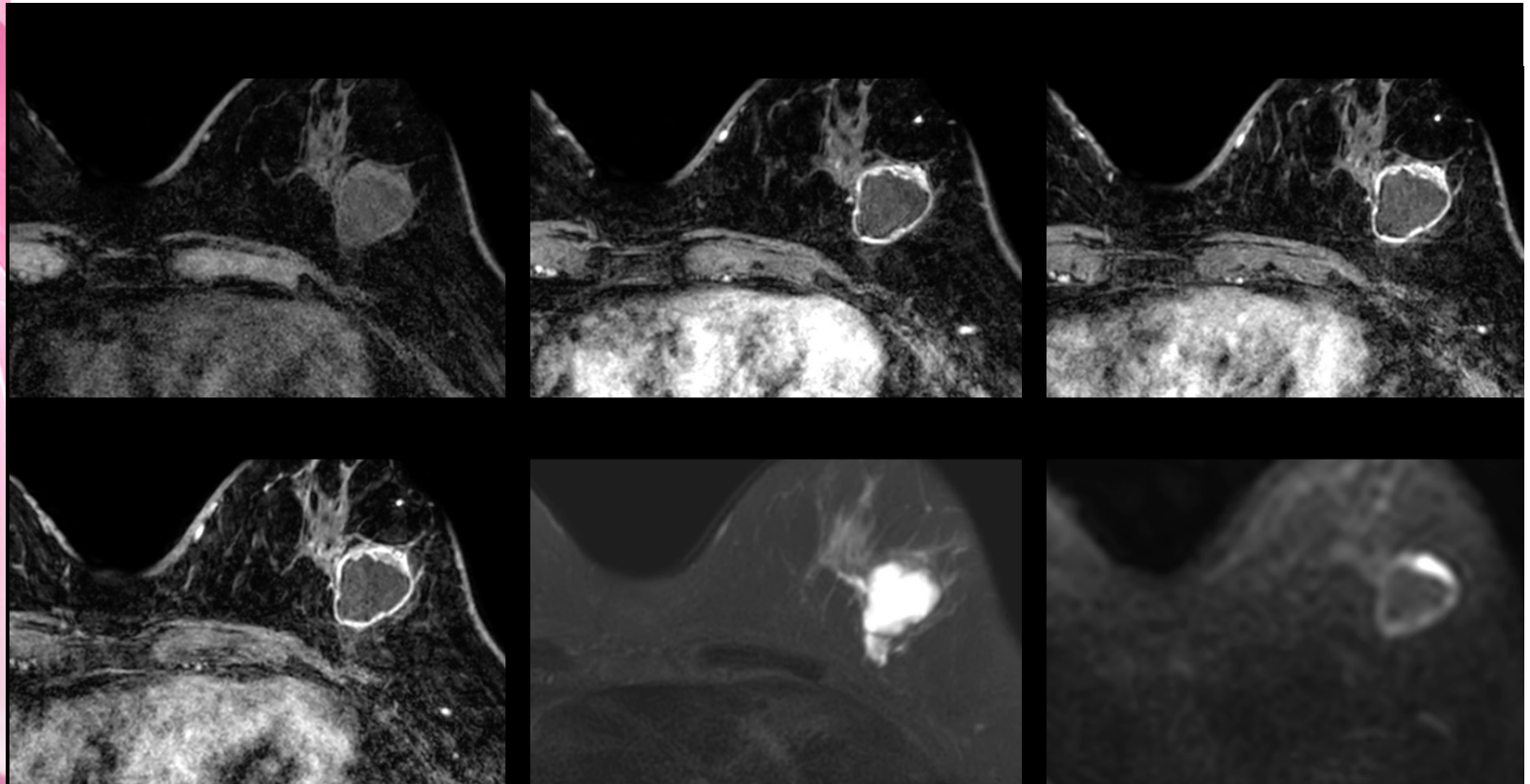
axial,
early

coronal,
early



Pre	60sec	180sec
360sec	T2WI	DWI

Q4-3. 乳房MRI検査の所見, カテゴリーは？



Pre	60sec	180sec
360sec	T2WI	DWI