

乳房部分切除術時の
適切な切除範囲の決定に必要な画像診断
(MRI, US, PET等の最新情報)

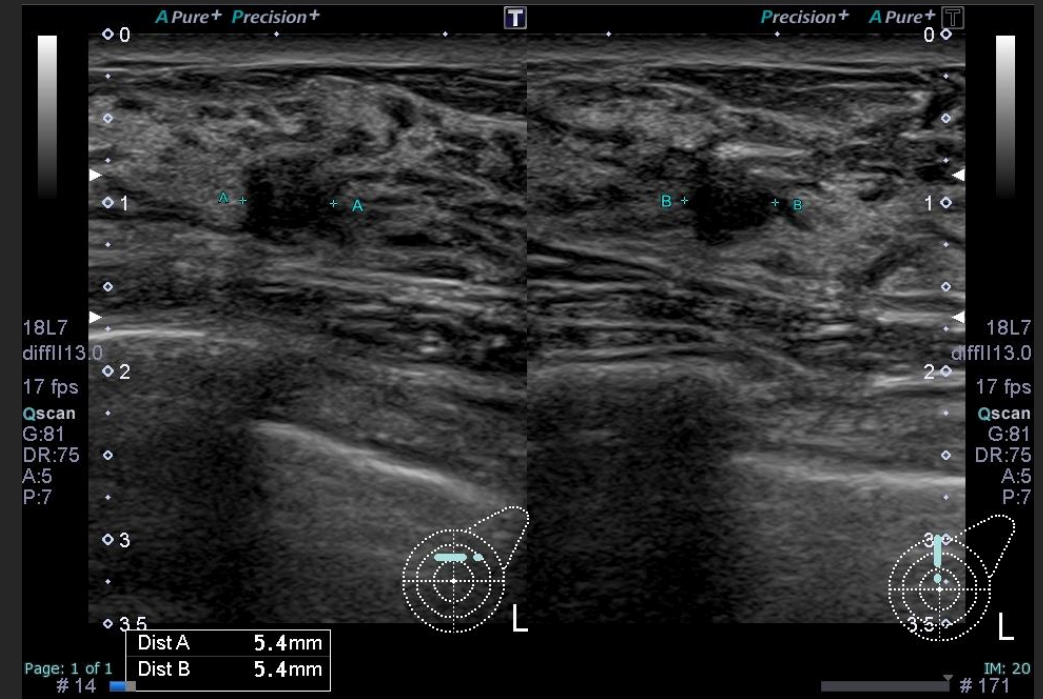
注) 「乳房トモシンセシスの最新情報と実地臨床への応用」を内容に含める

関西電力病院 放射線診断科

本田 菜也

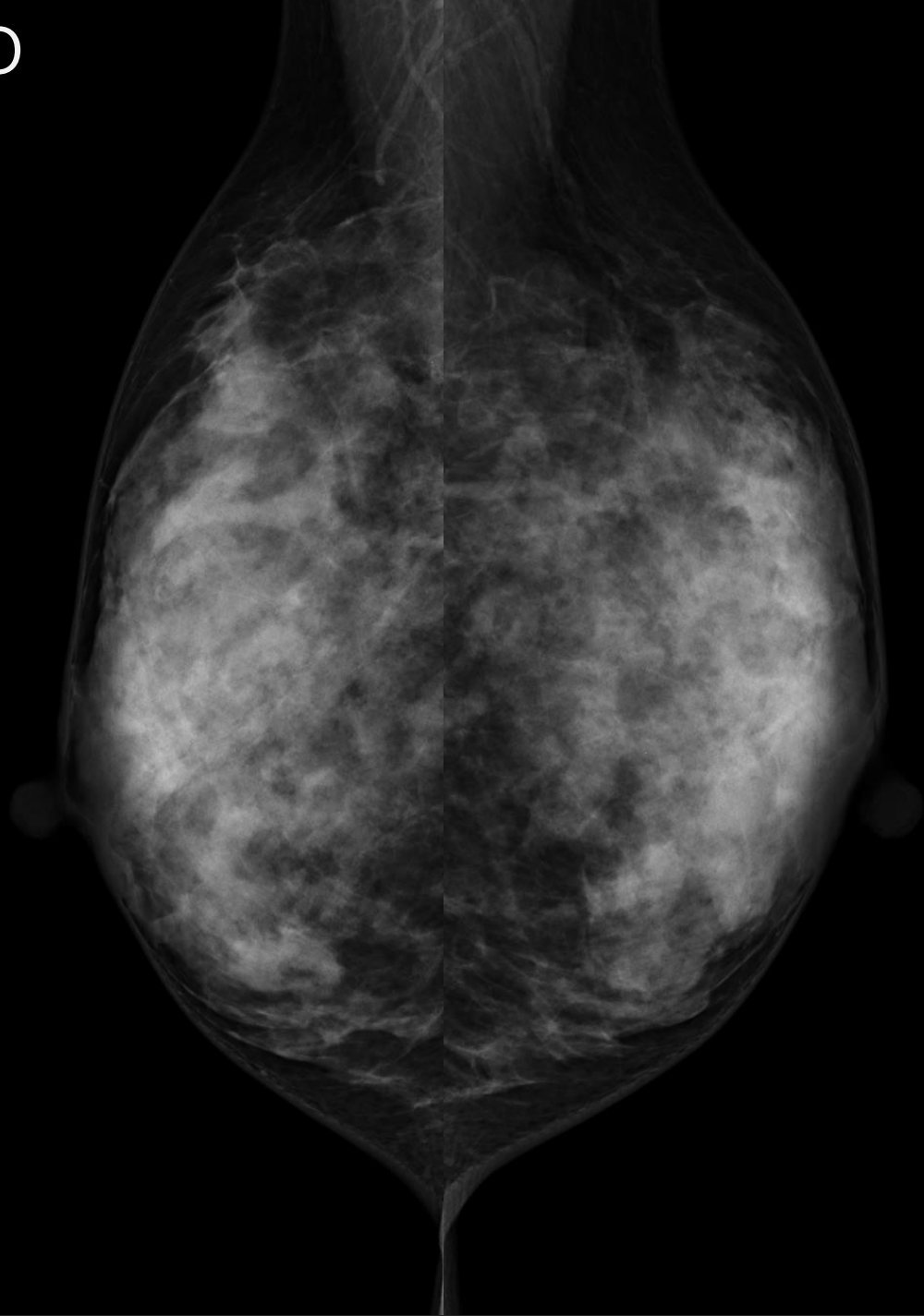
Case 1 : 50代女性 検診USで腫瘍指摘

- 既往歴：乳腺炎
- HBOC家族歴：なし
- 未閉経、妊娠2回、出産1回

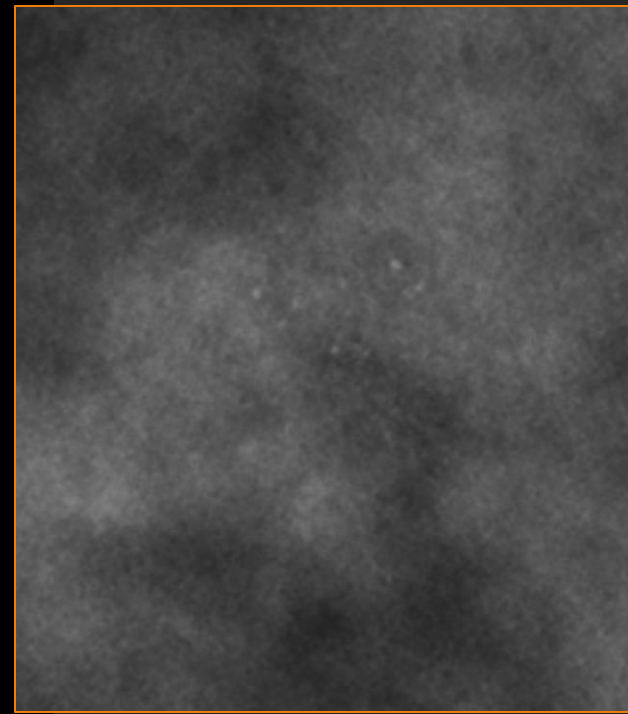
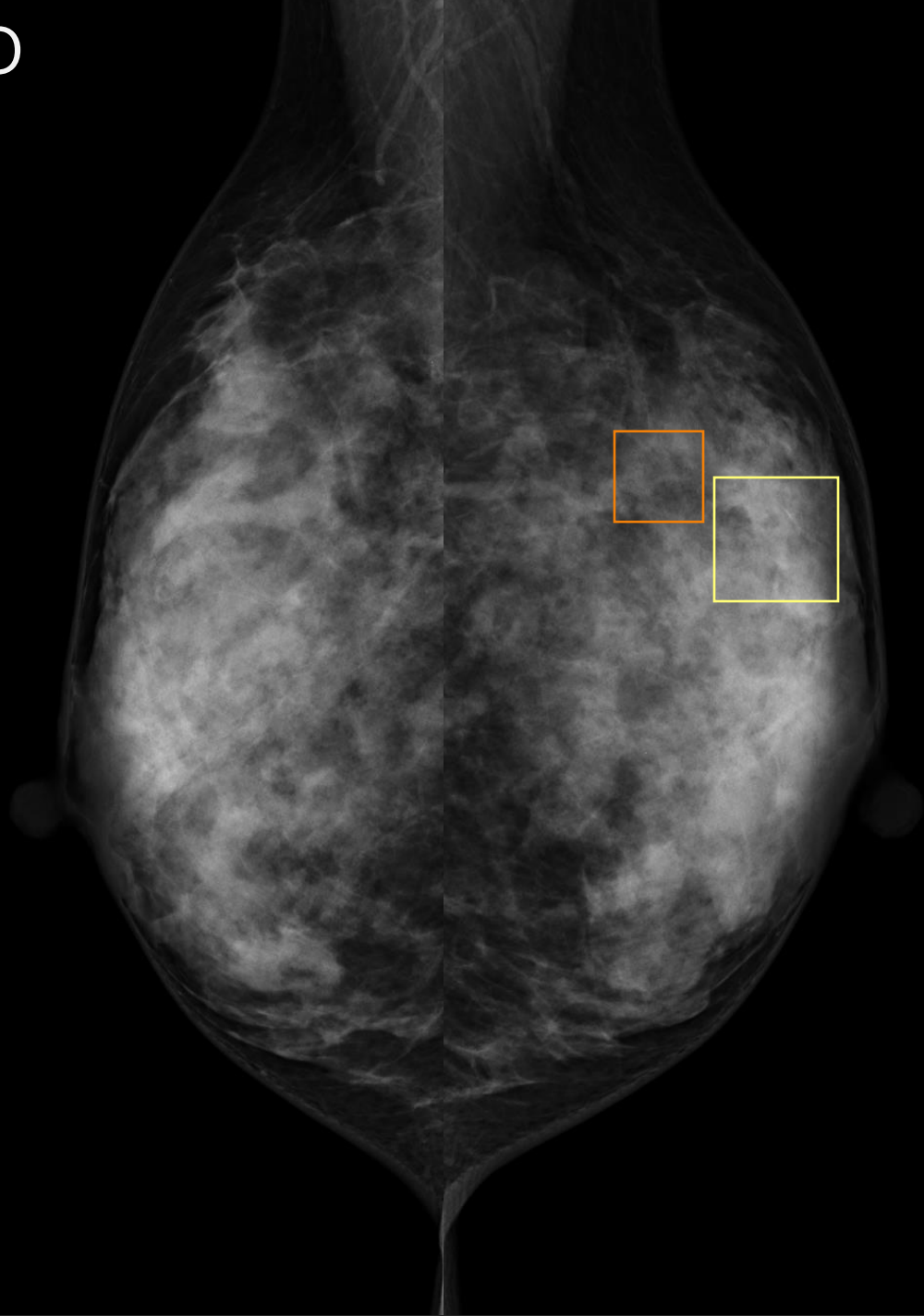


- Q1-1 : MMGの所見を述べてください。
- Q1-2 : MRI早期相MIPでBPEを判定してください。
- Q1-3 : MRI早期相MIPで病変を指摘してください。
- Q1-4 : 温存手術の可否を判断するため、次にすべきことは何でしょうか？

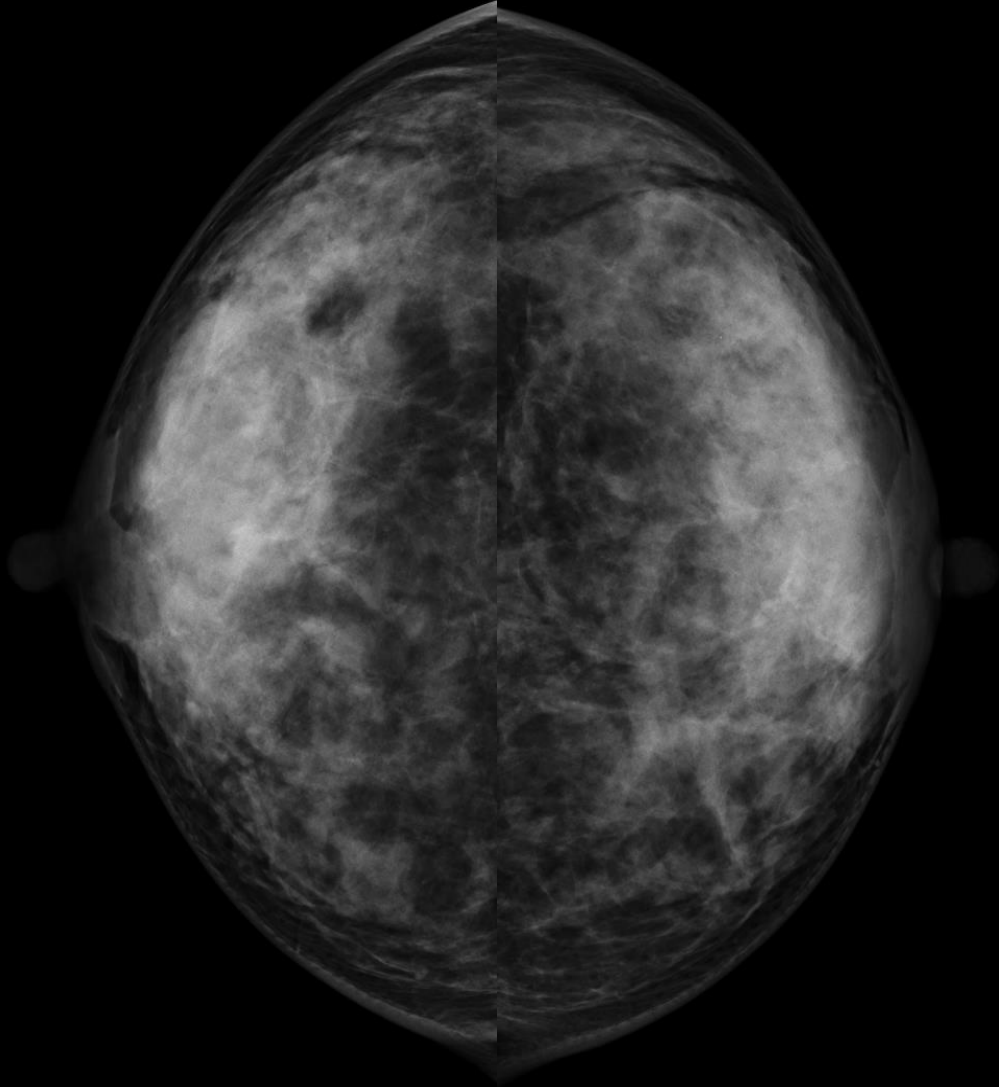
MLO



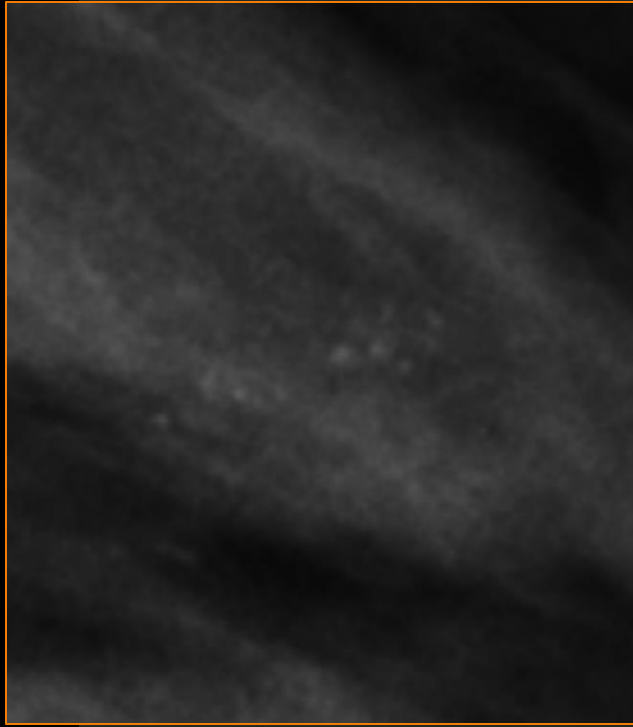
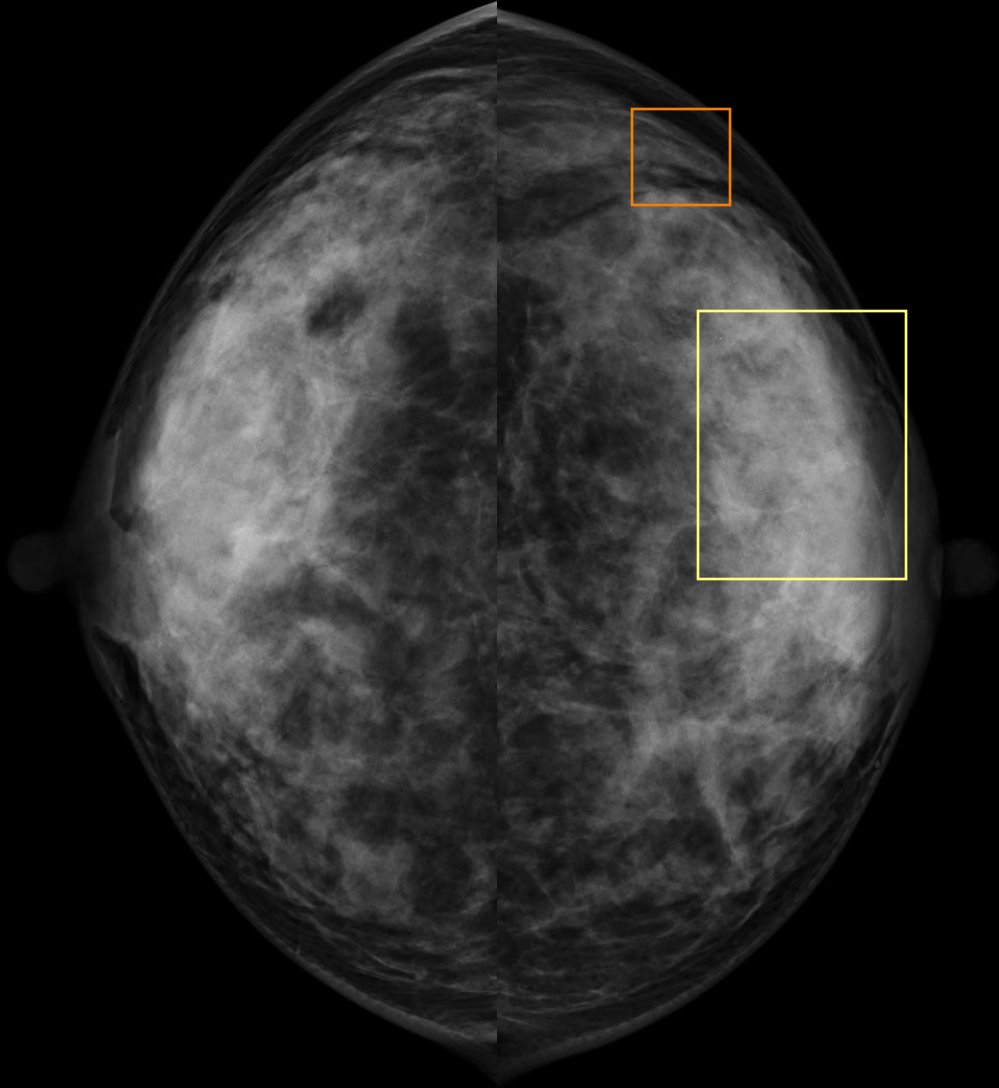
MLO



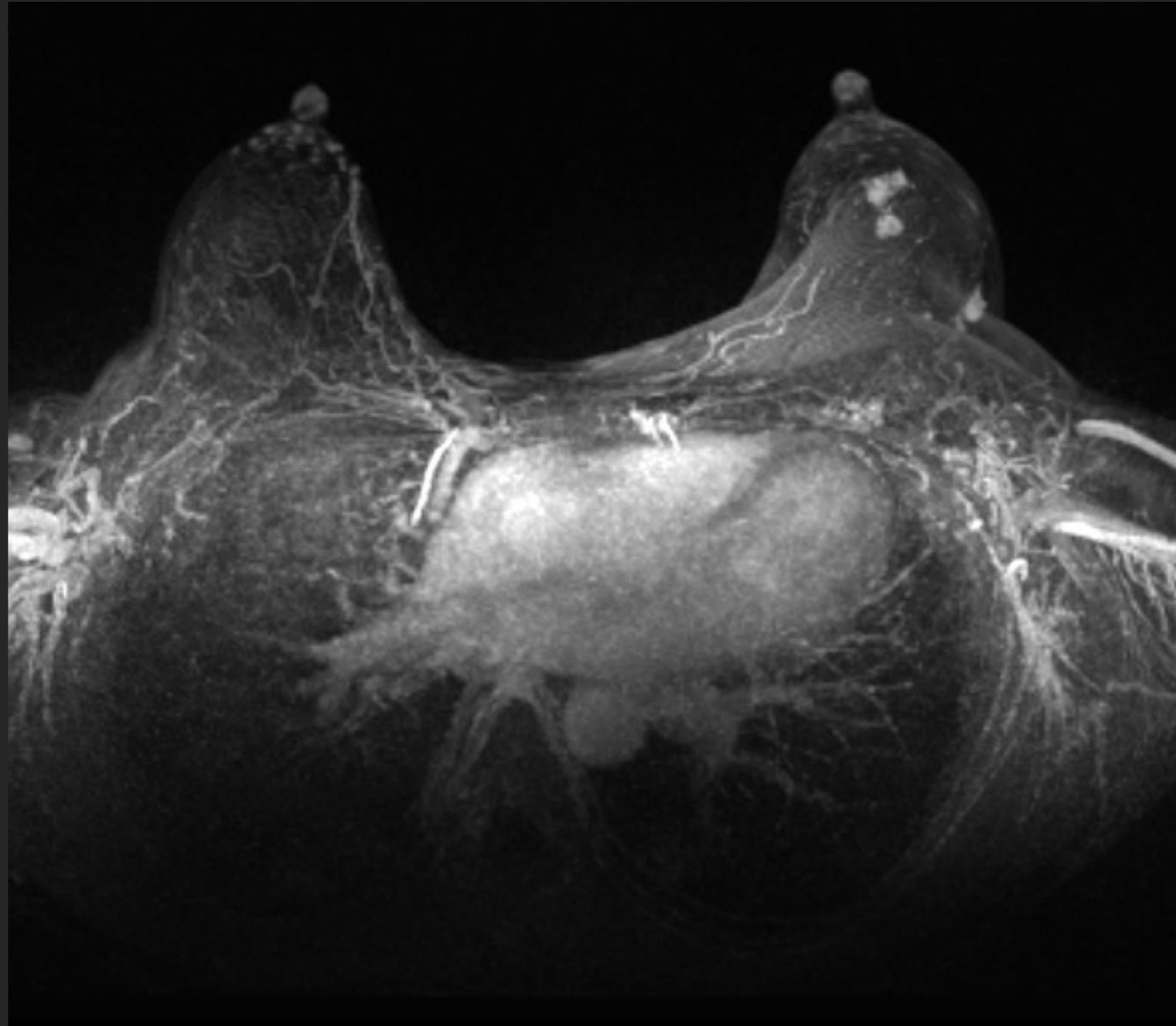
CC



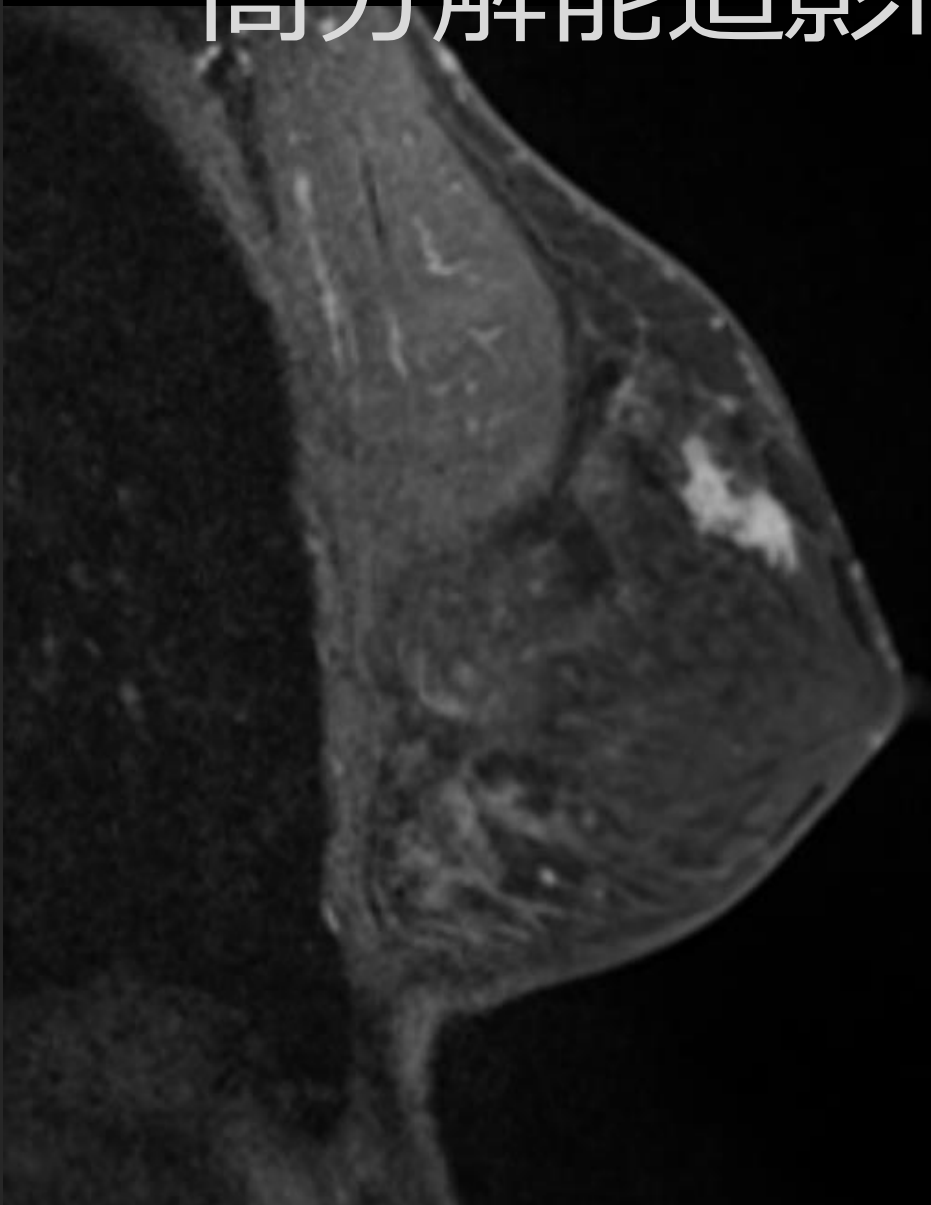
CC



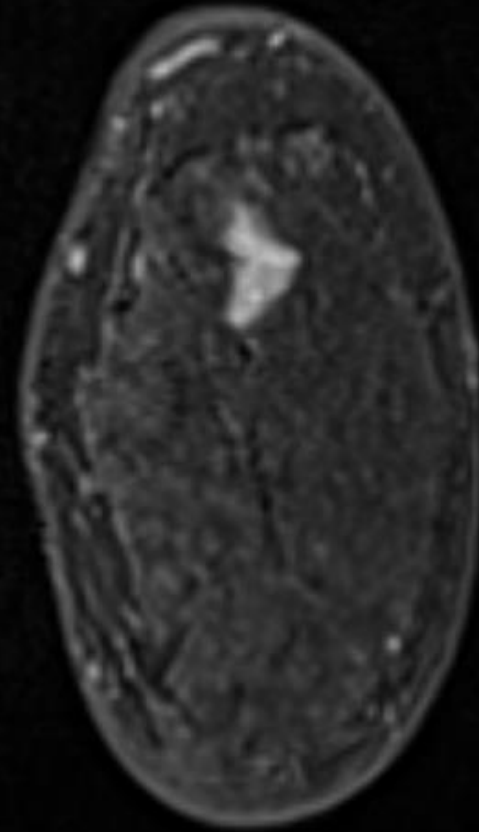
早期相 MIP



高分解能造影MRI (造影後2-5分)

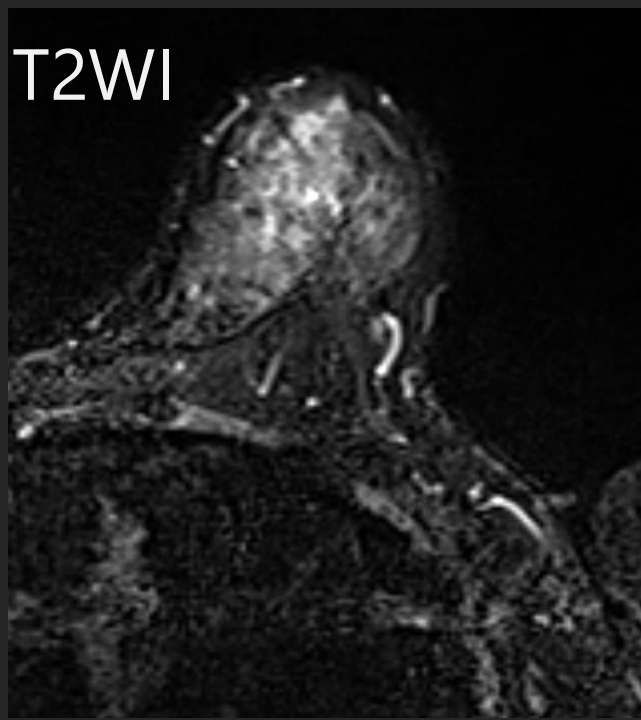


矢状断



冠状断

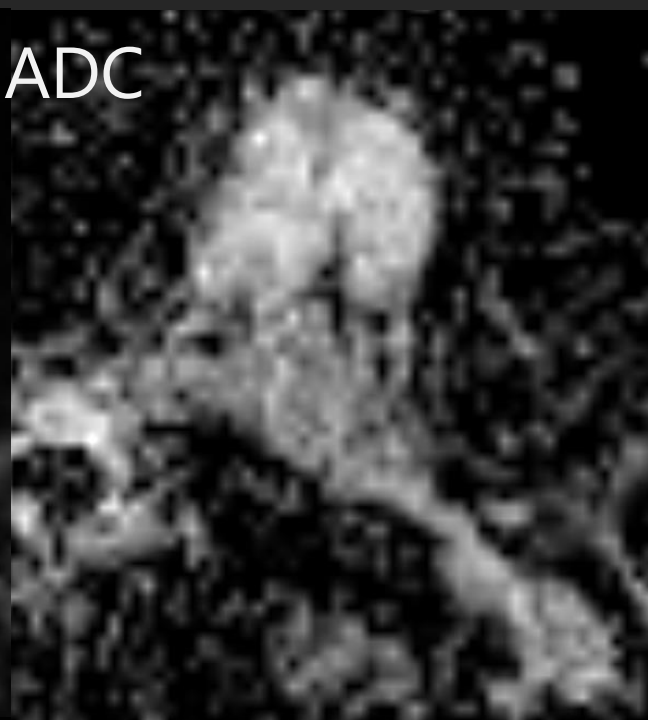
T2WI



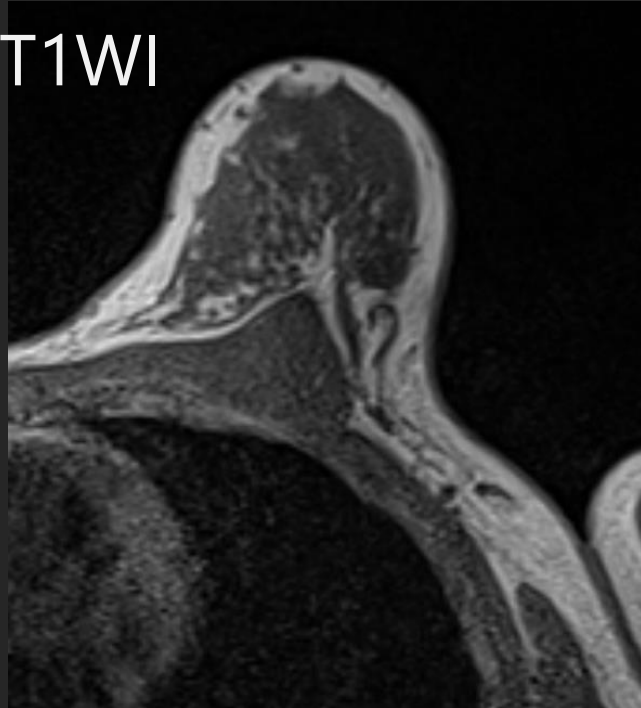
DWI



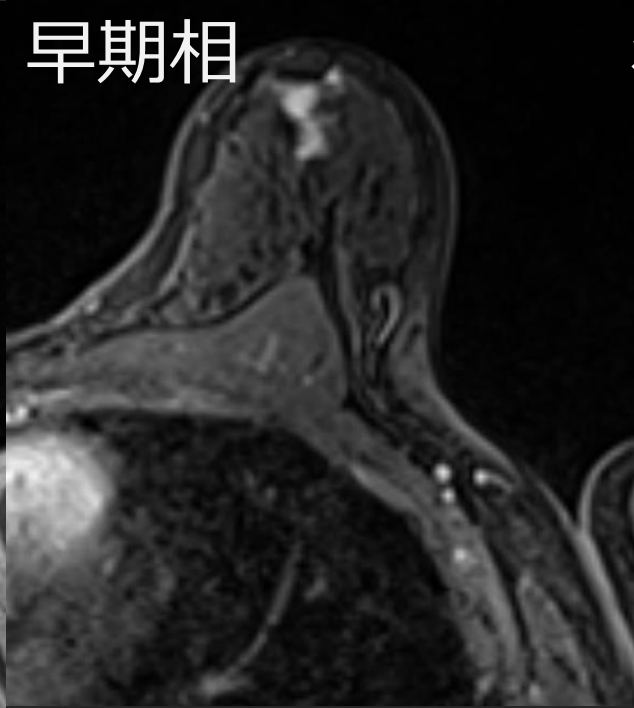
ADC



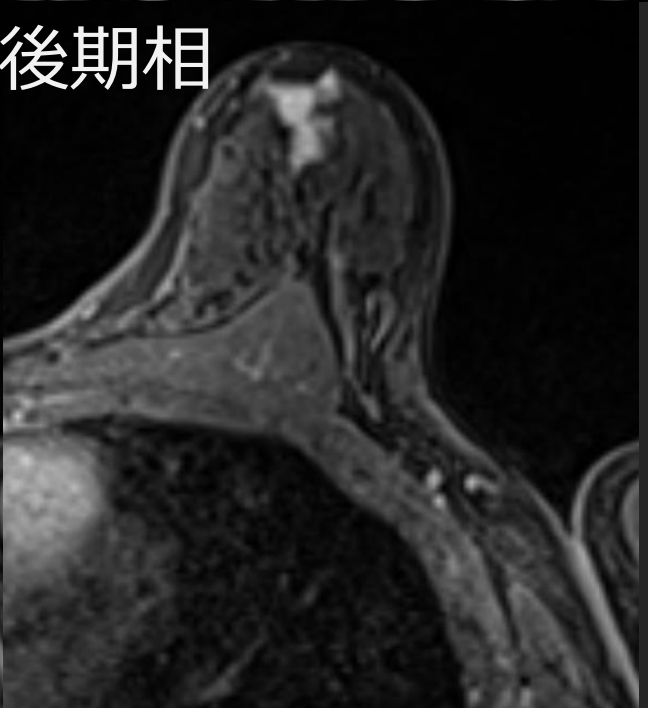
T1WI



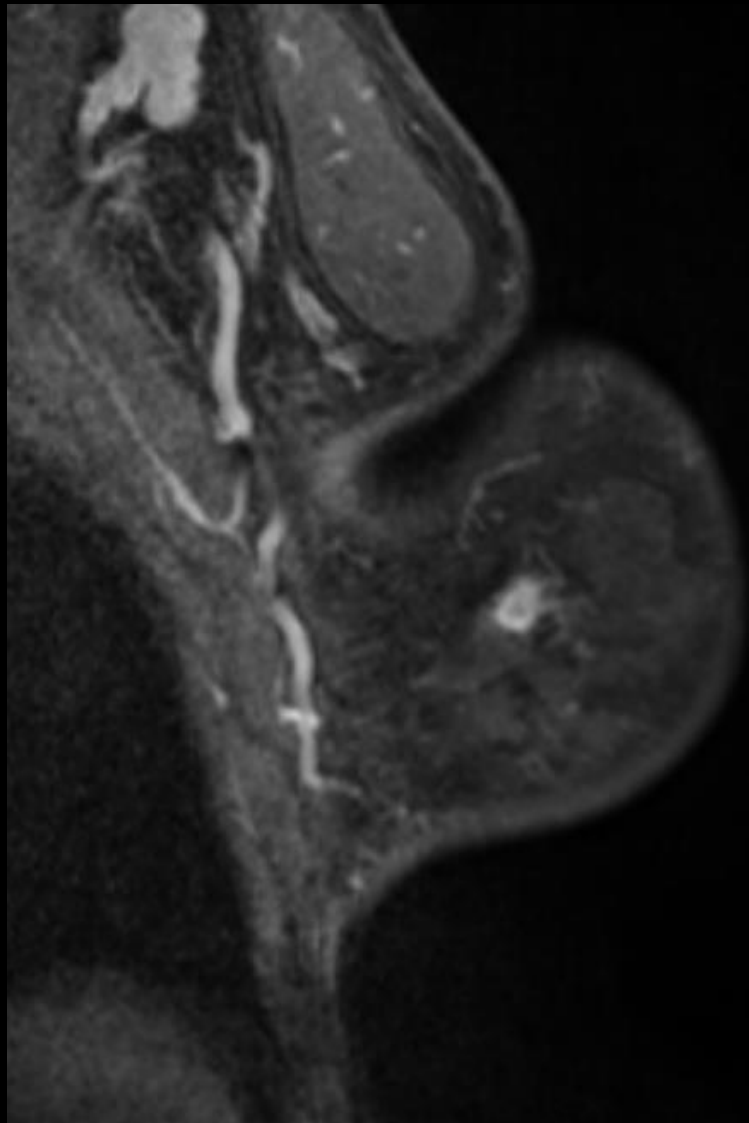
早期相



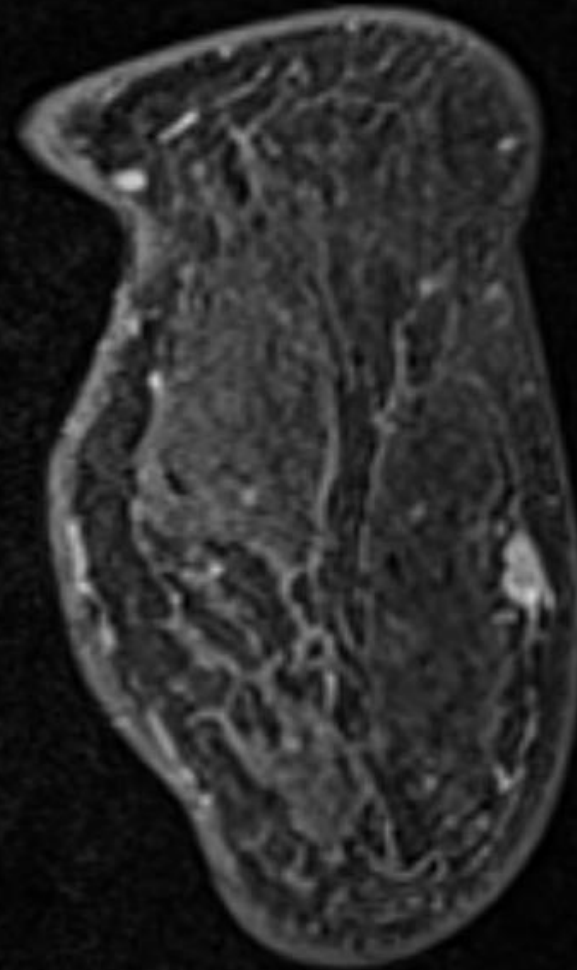
後期相



高空間分解能MRI（造影後2-5分）

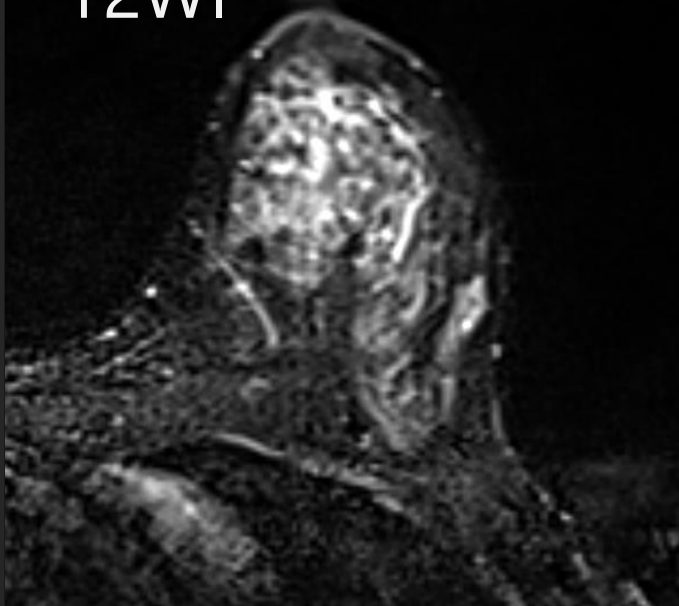


矢状断



冠状断

T2WI



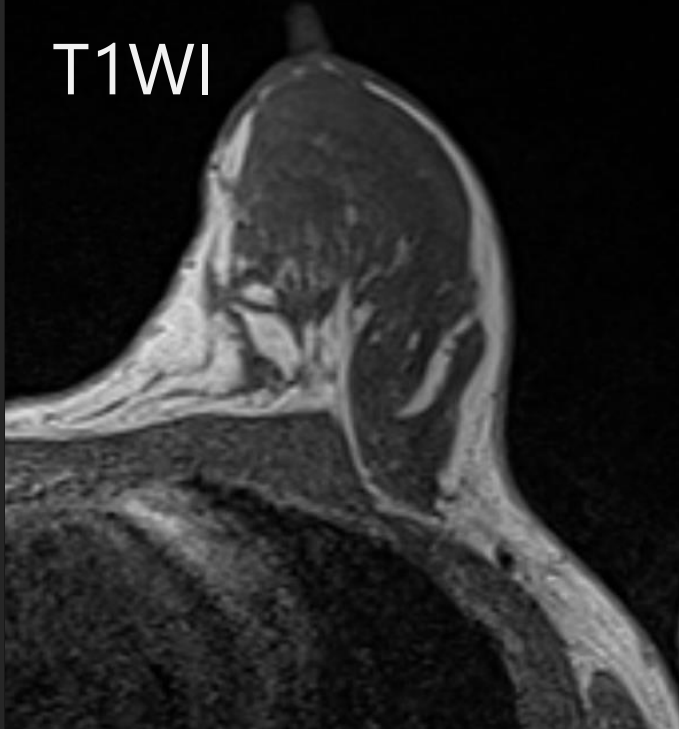
DWI



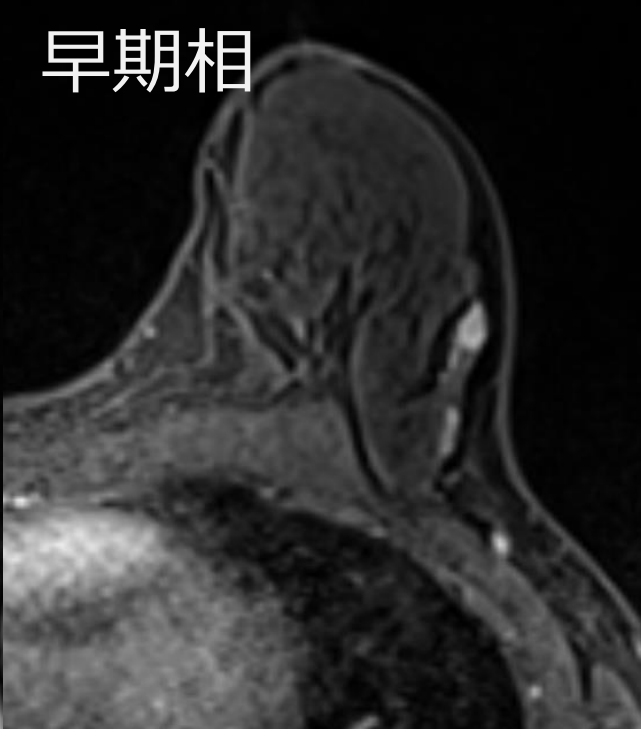
ADC



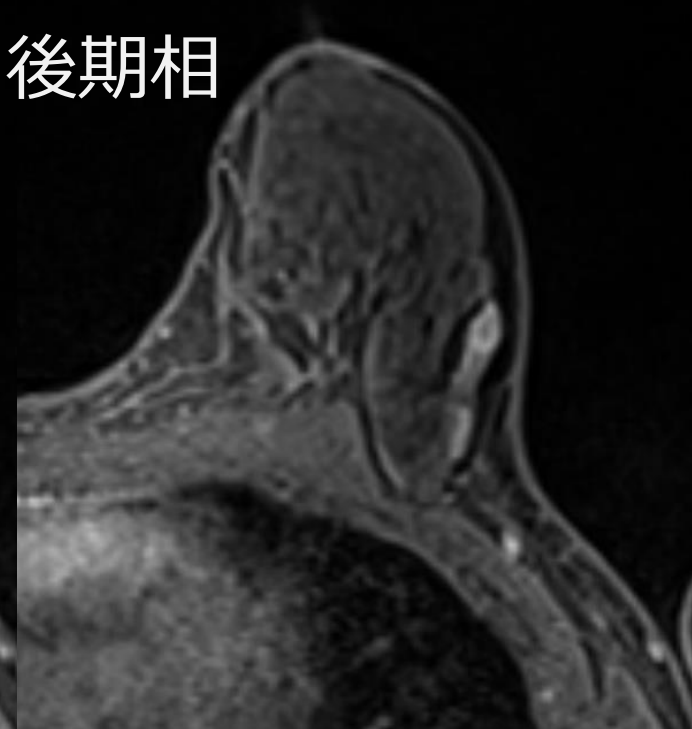
T1WI



早期相



後期相

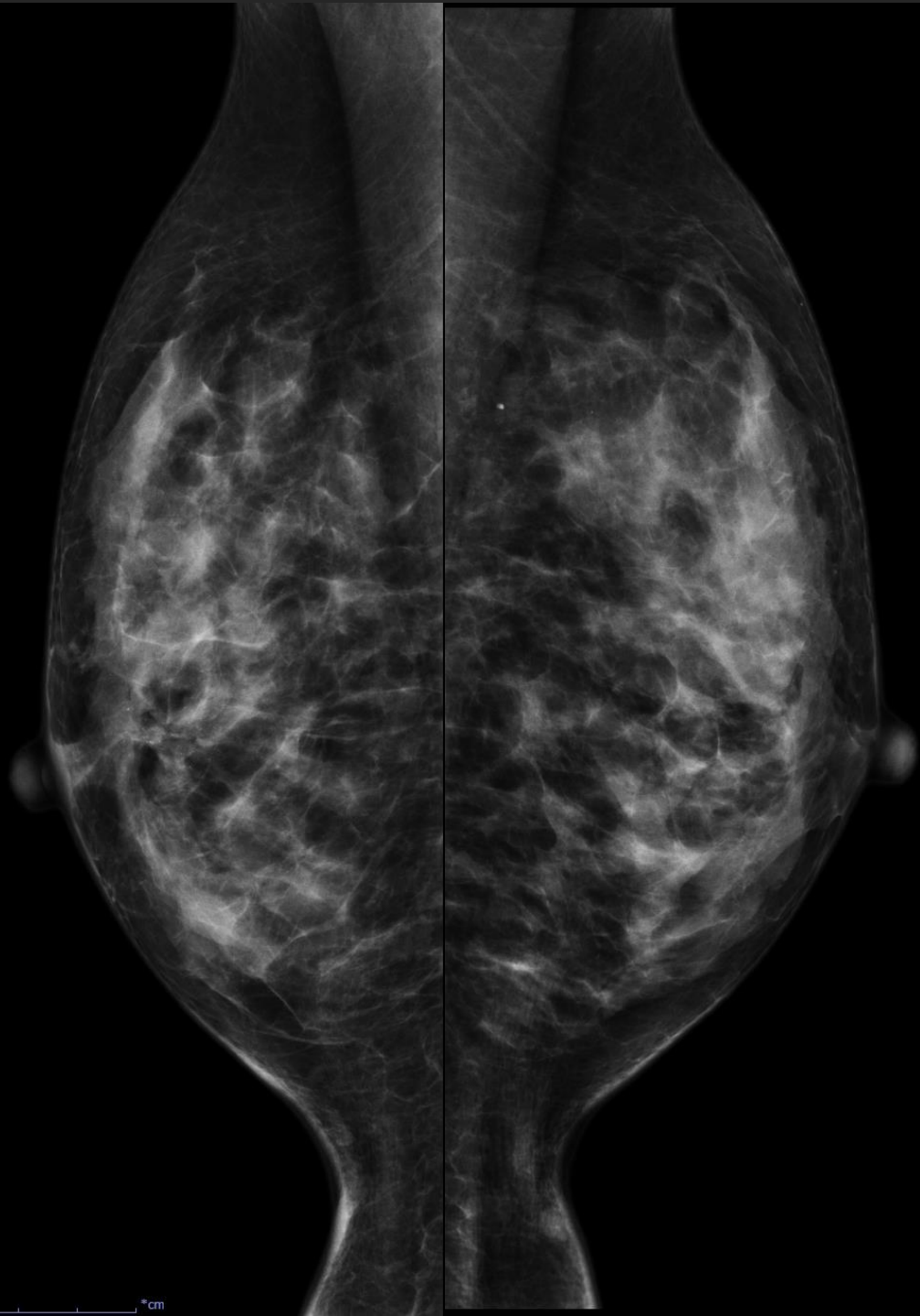


Case 2 : 30代女性 検診マンモグラフィで異常を指摘

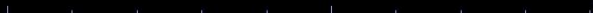
- 既往歴 : フォンレックリングハウゼン病 (遺伝子診断未)
- HBOC家族歴 : 父方おば 70代で乳癌
- 出産歴なし

- Q2-1 : MMG、トモシンセシスの所見を述べてください
- Q2-2 : USの所見を述べてください
- Q2-3 : MRI早期相MIPでBPEを判定してください
- Q2-4 : MRI早期相MIP、超早期相MIPから病変範囲を推定してください

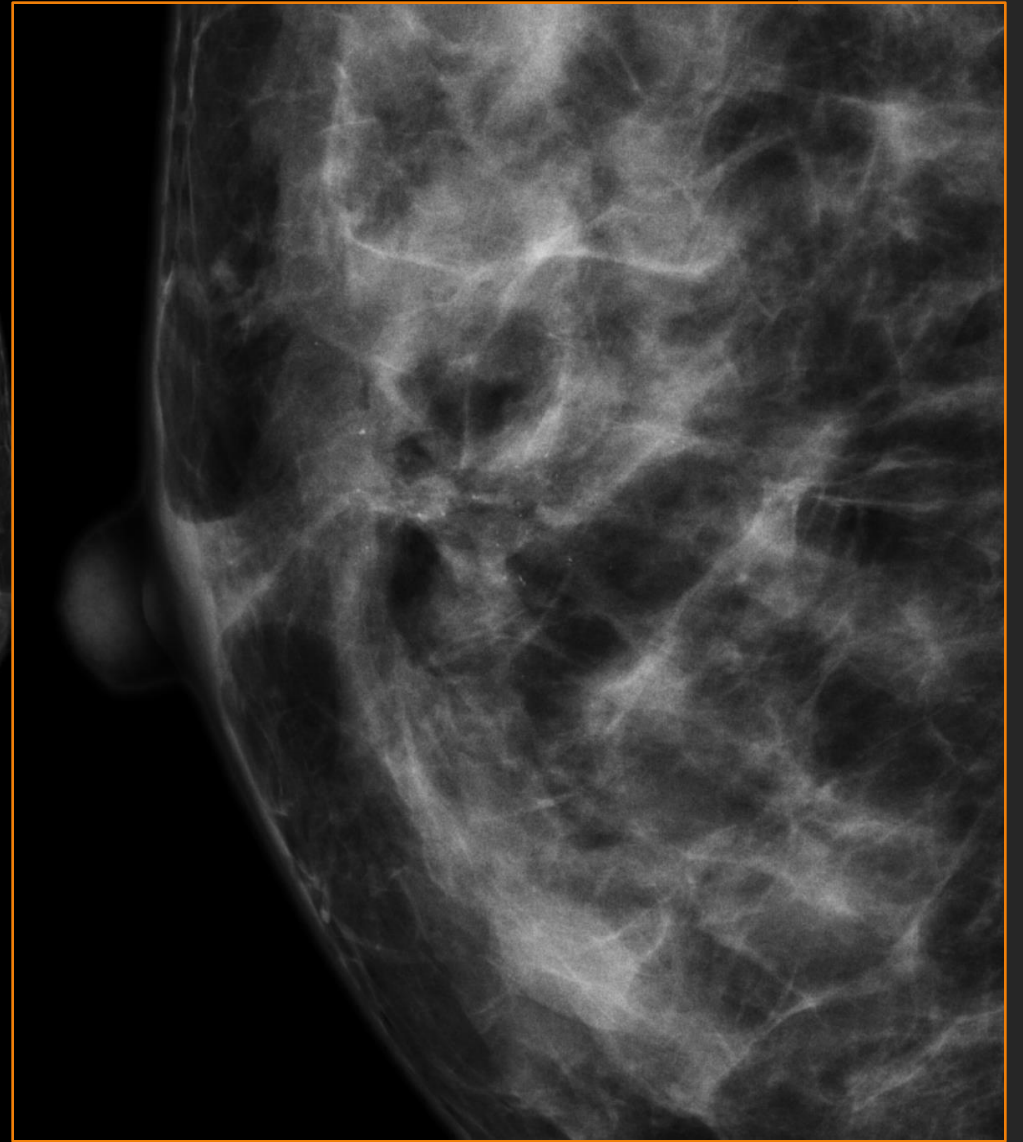
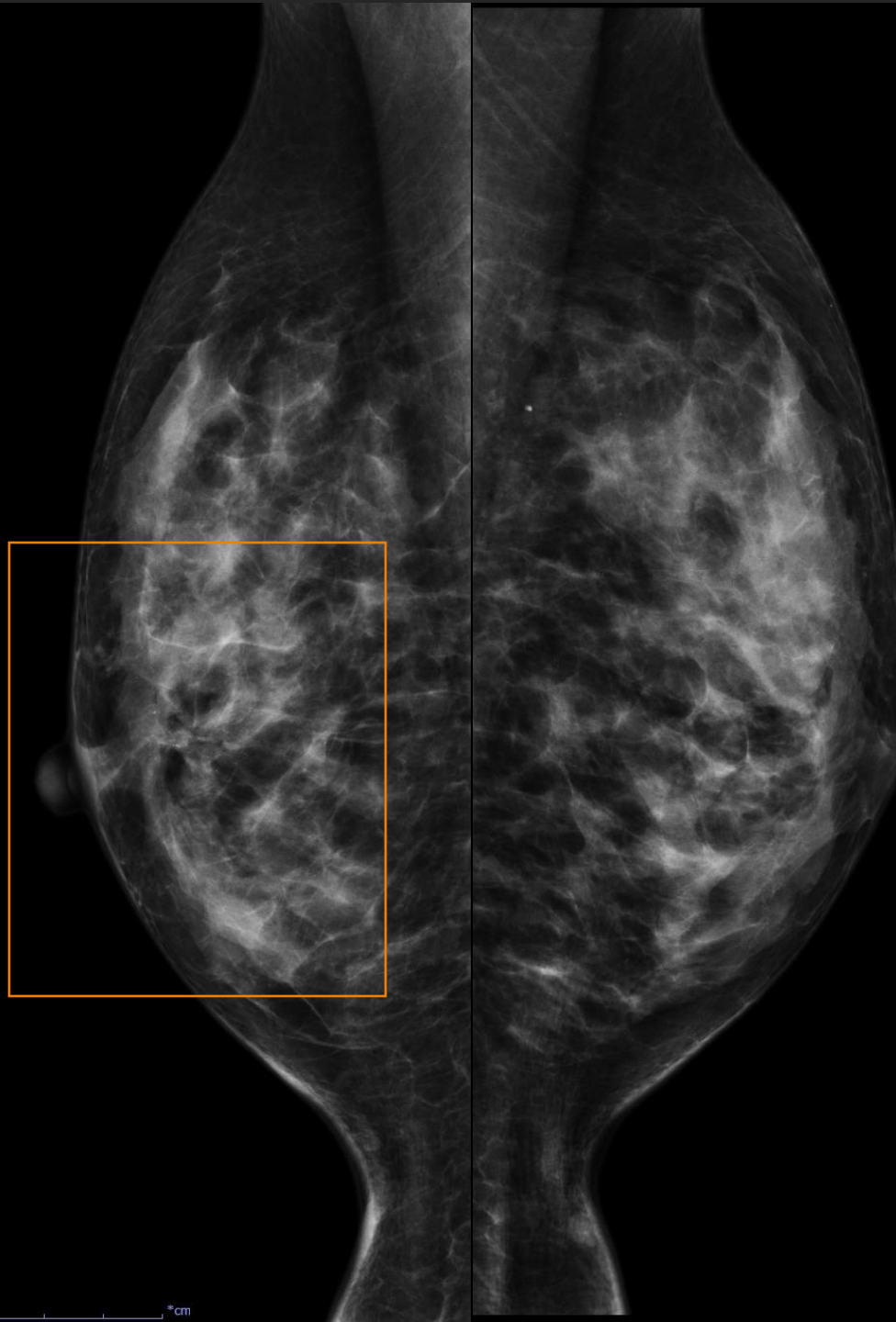
MLO



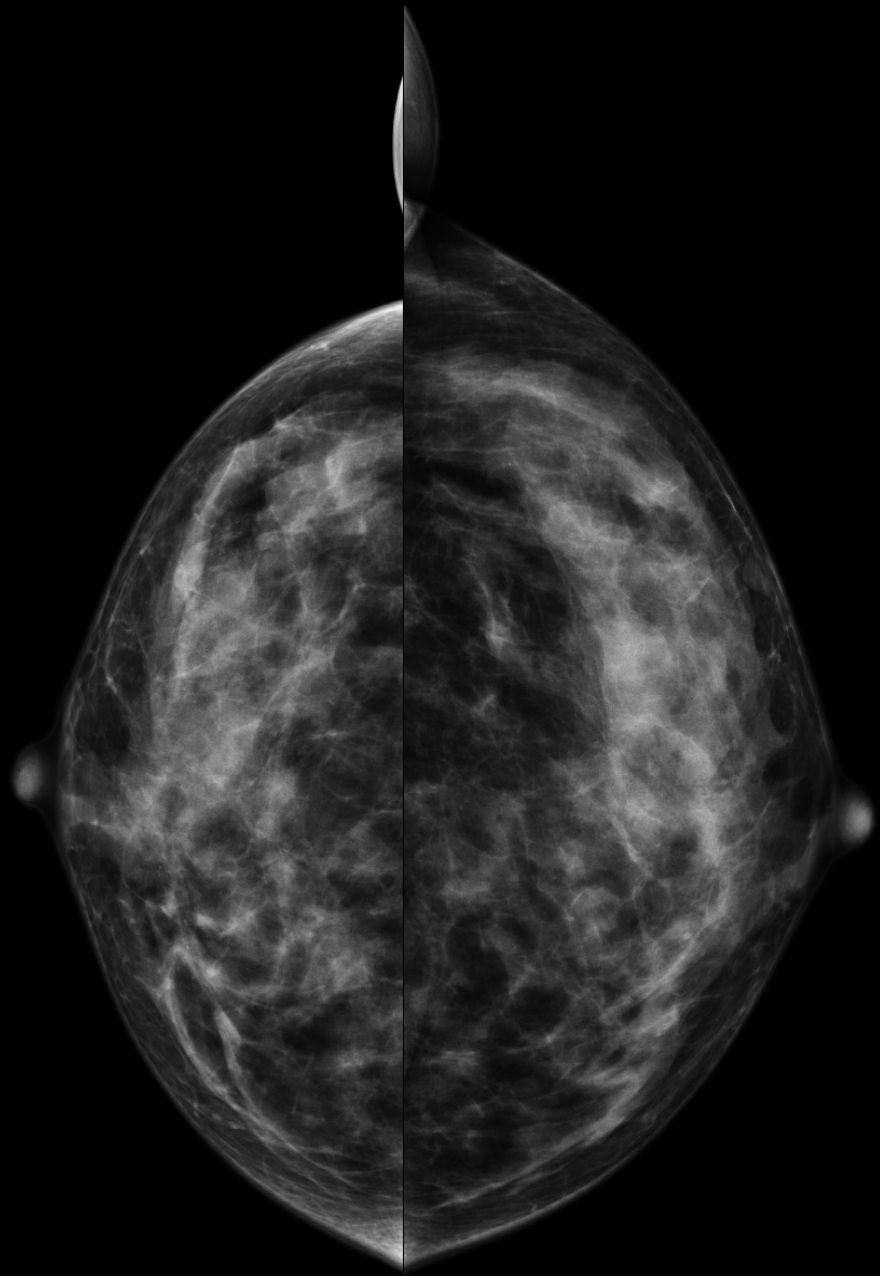
*cm

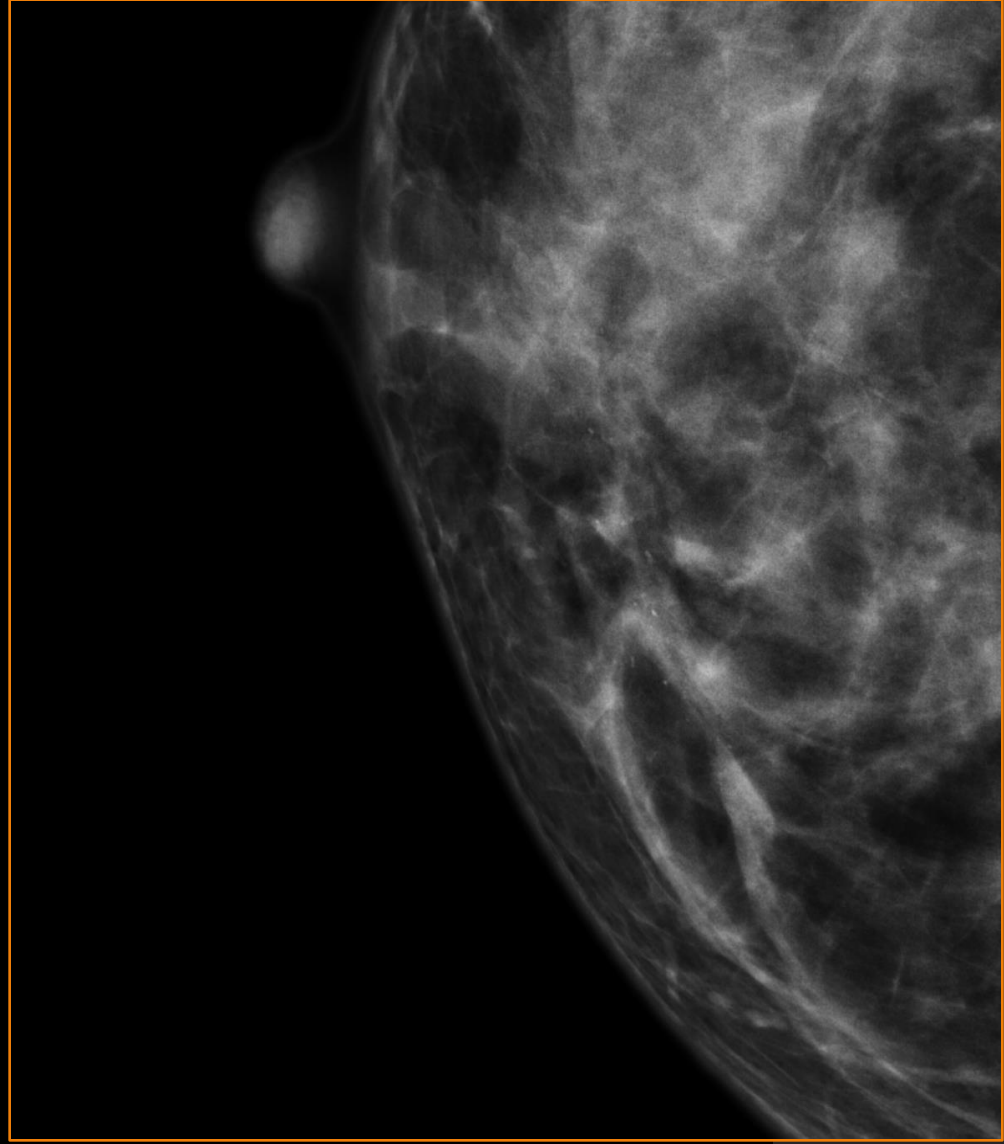
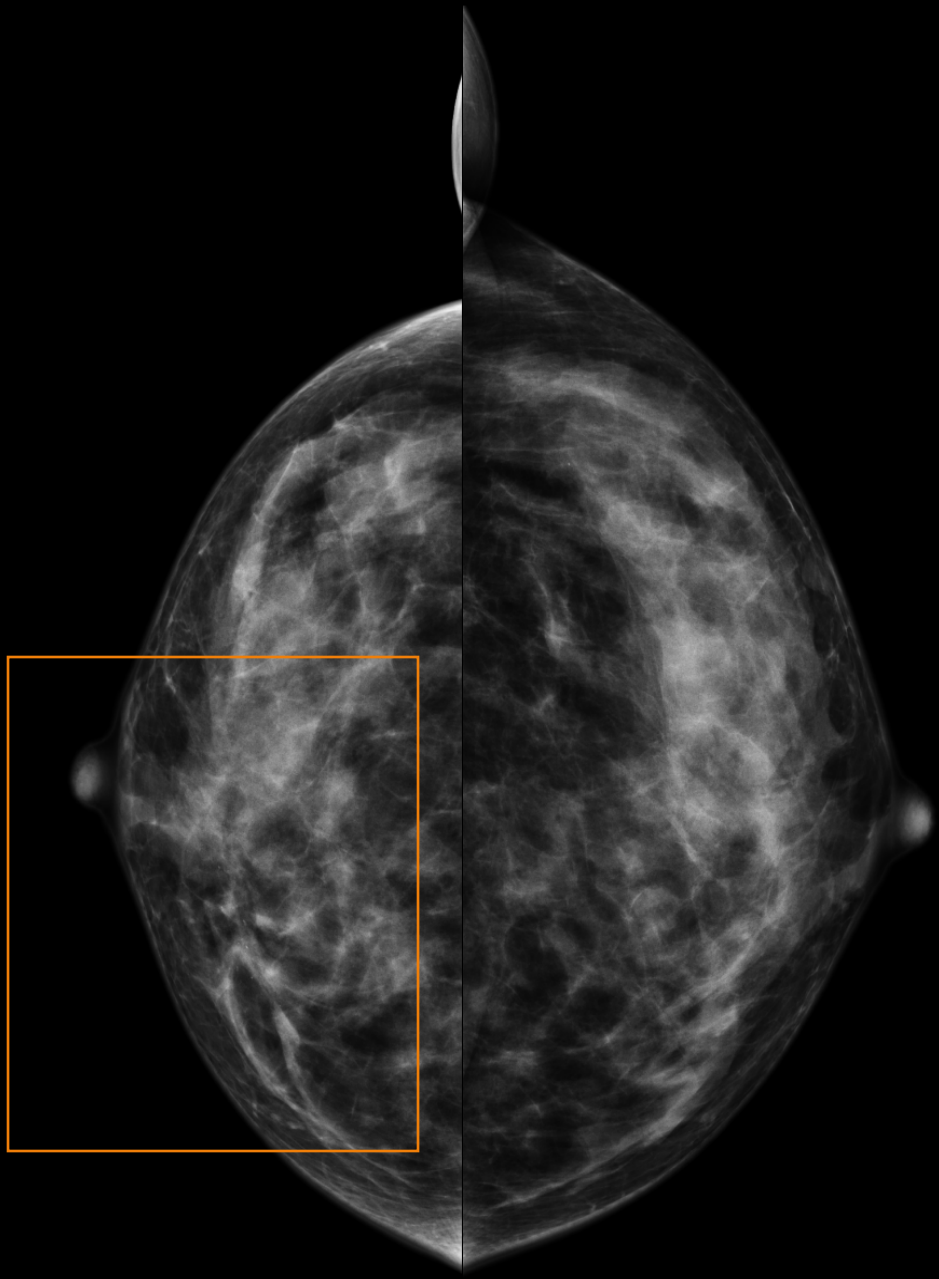


MLO



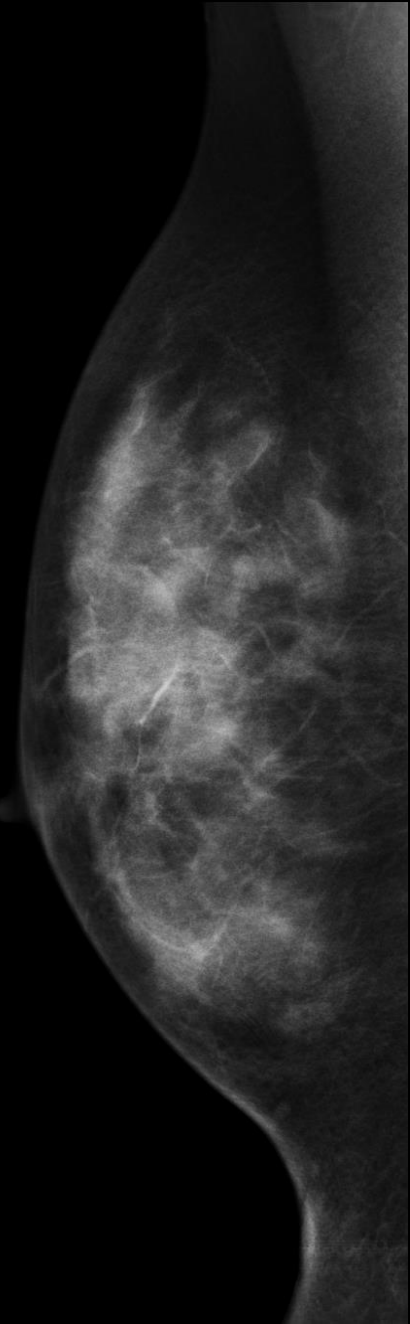
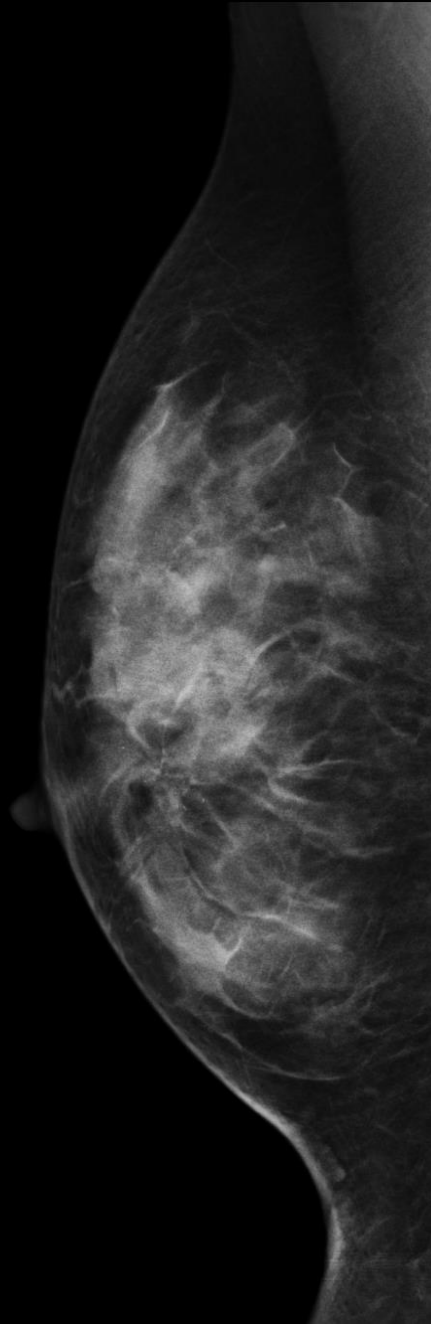
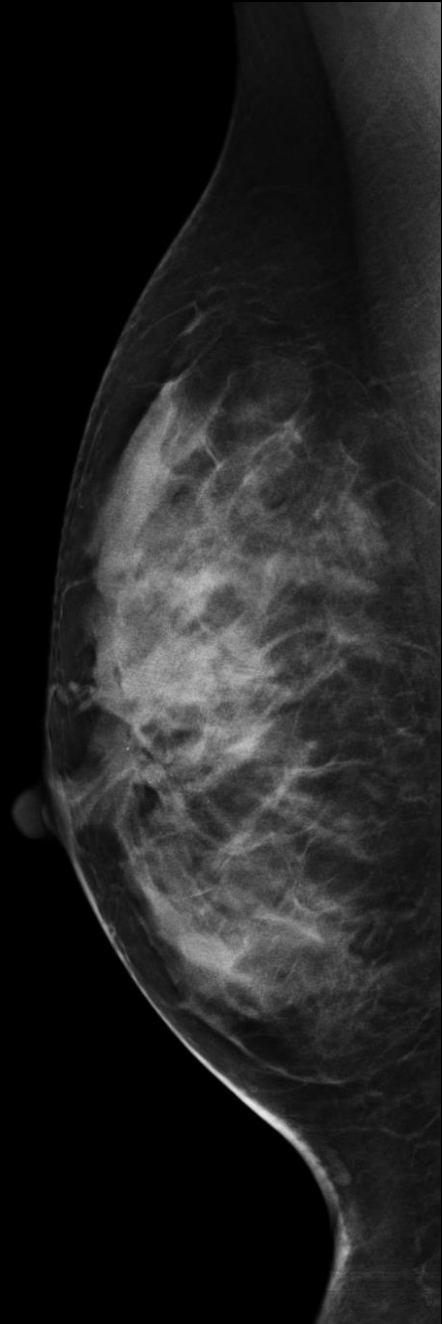
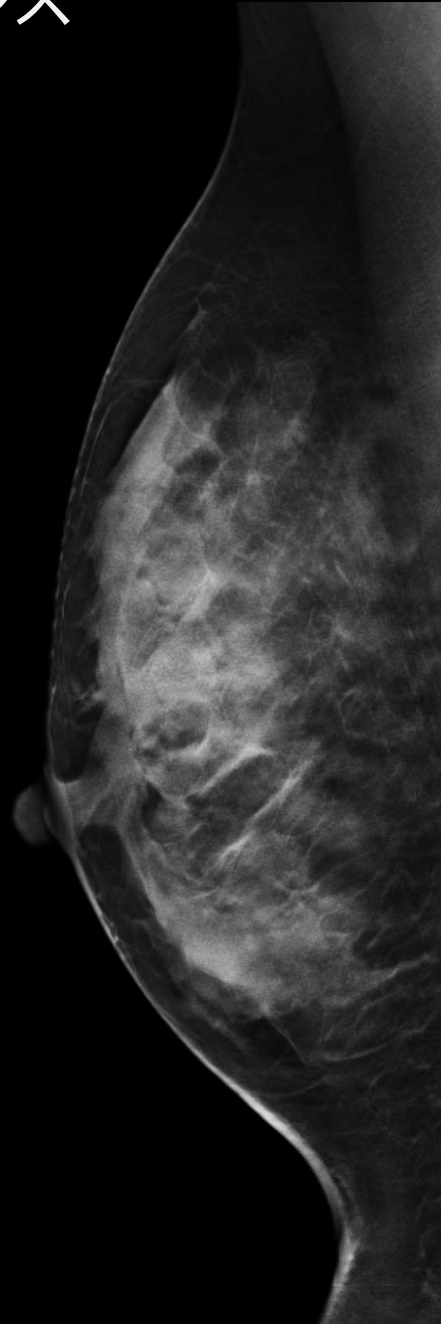
cm





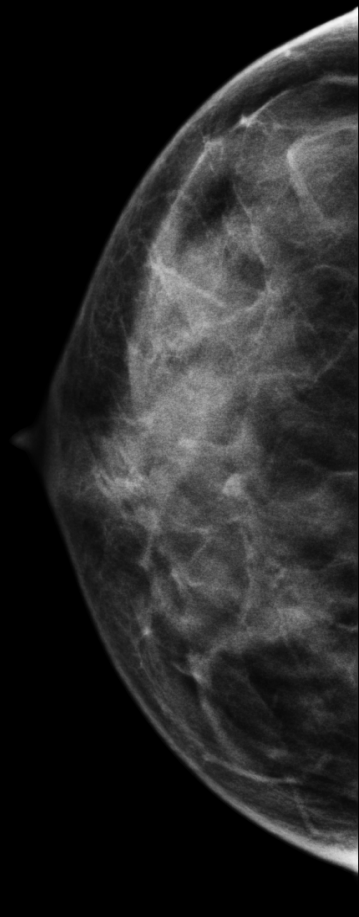
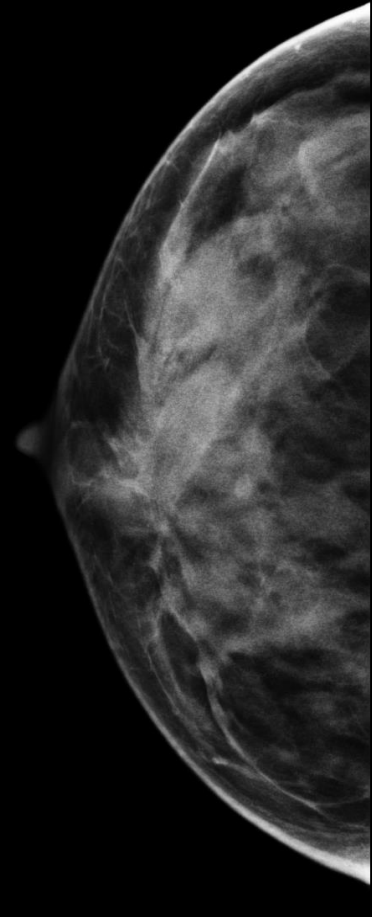
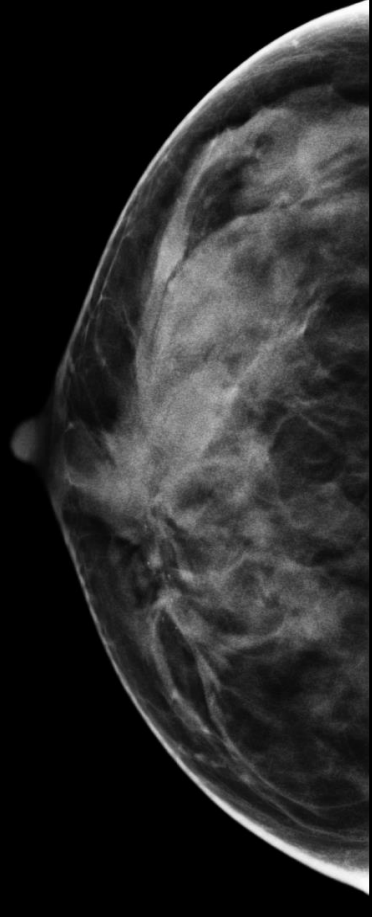
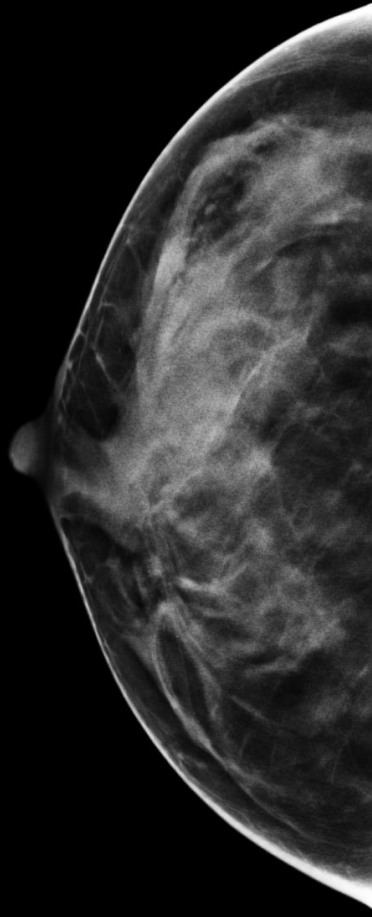
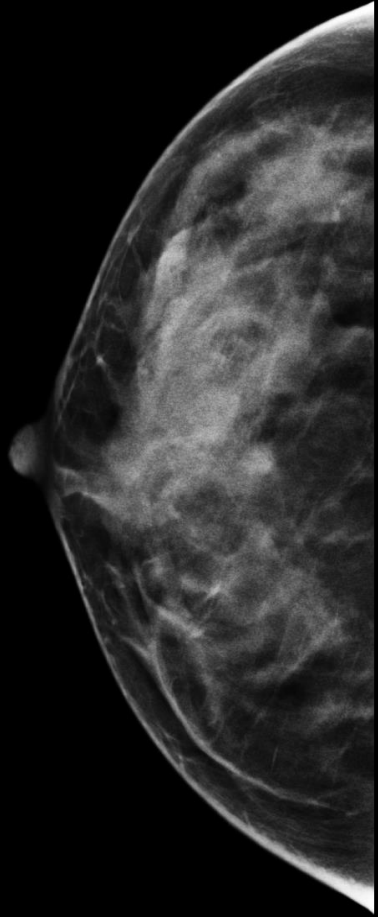
トモシンセシス

MLO



→内側

トモシンセシス
CC

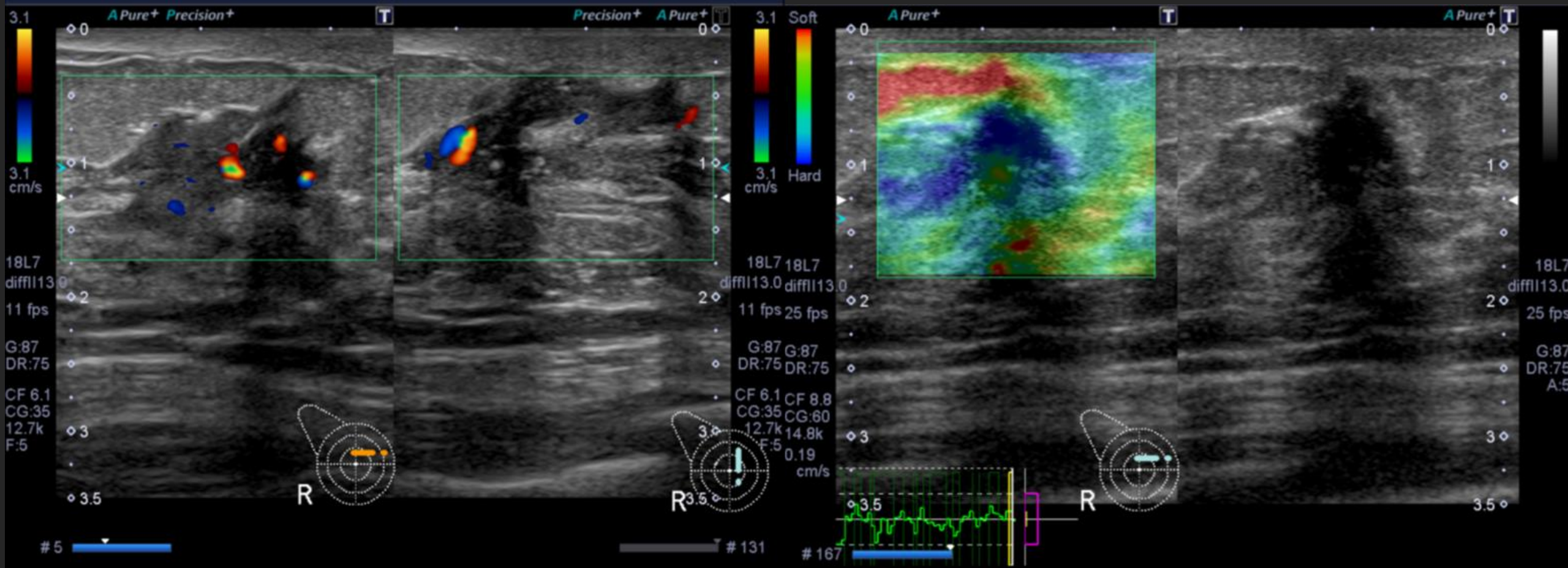


→頭側

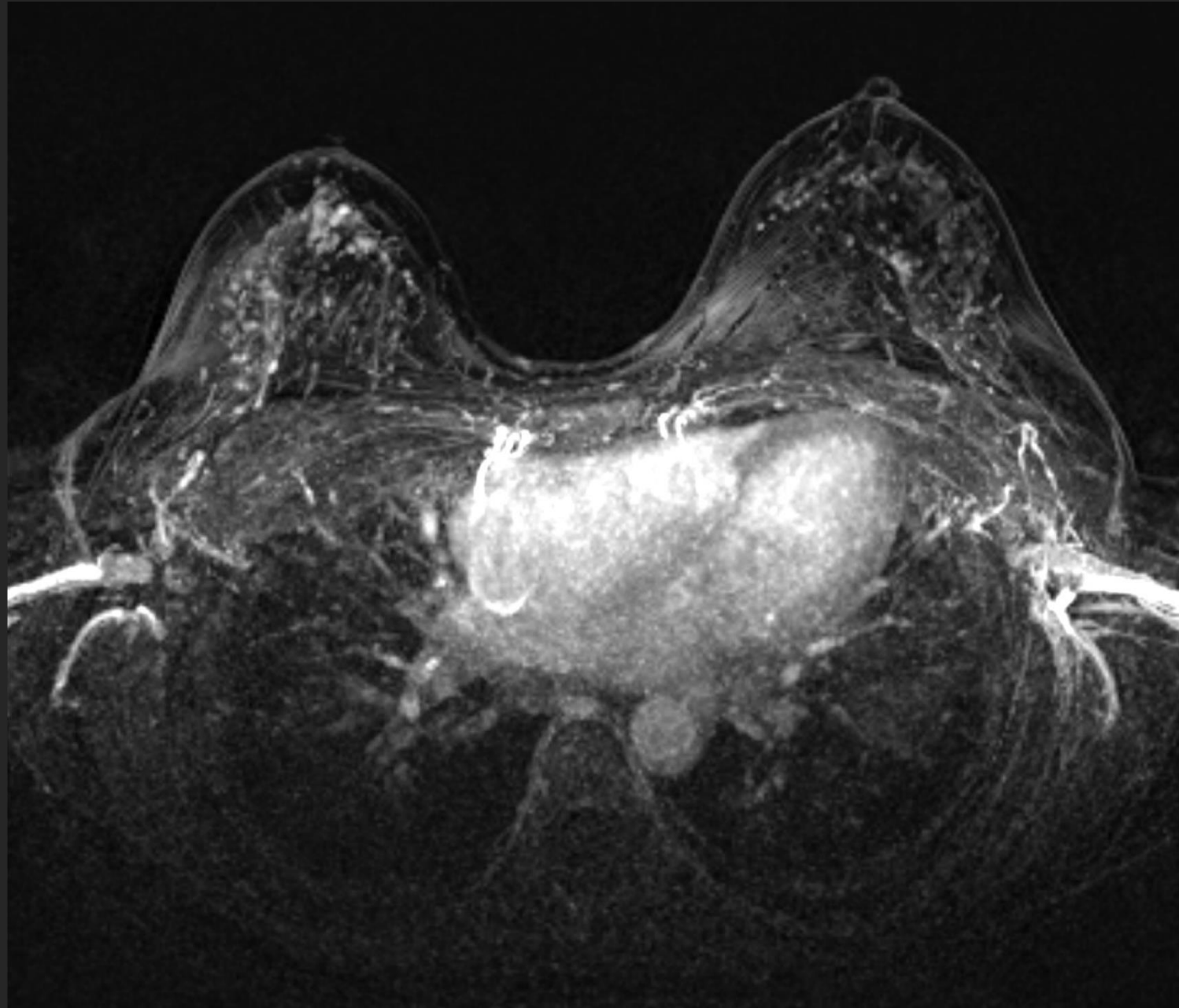
US



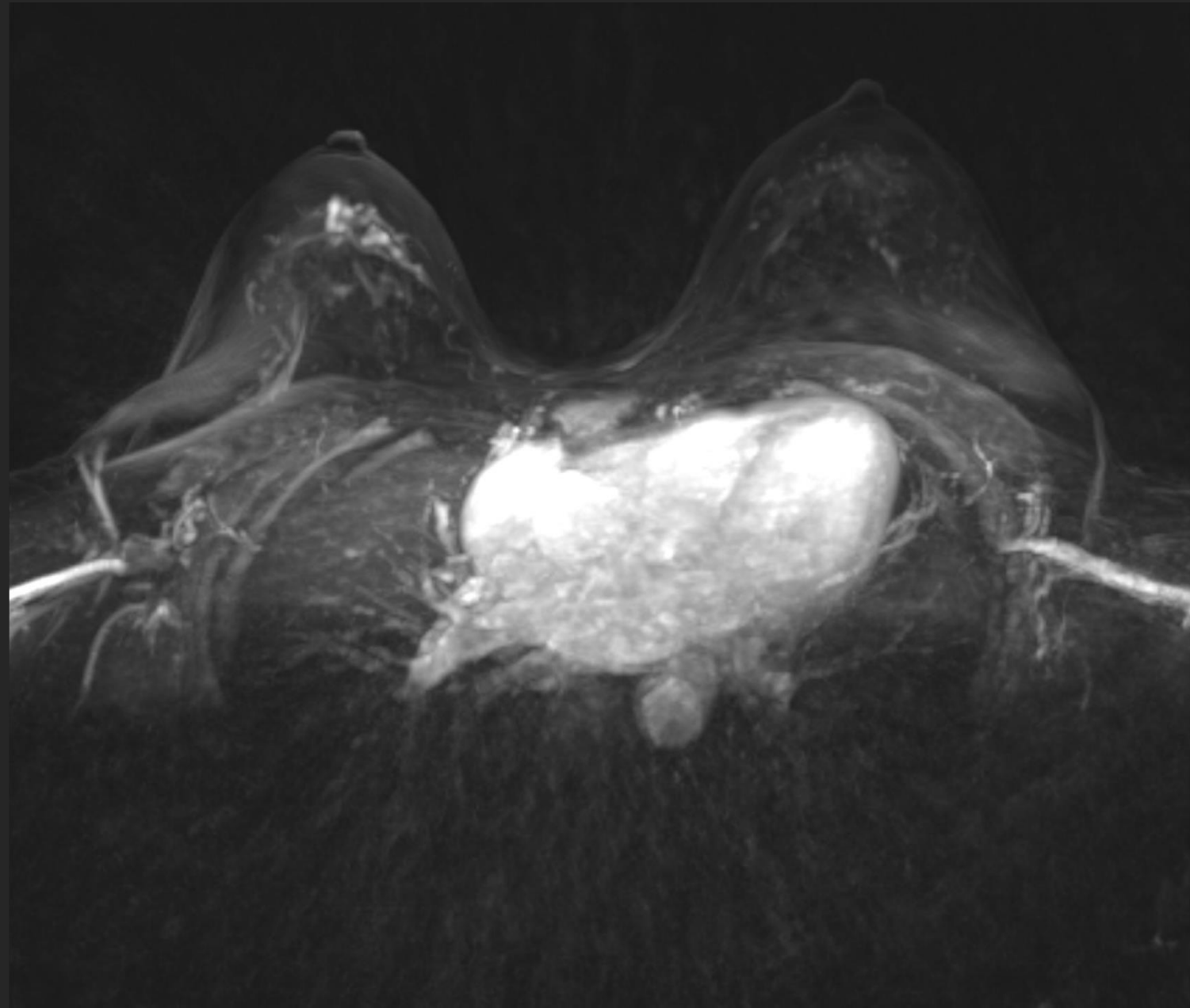
US



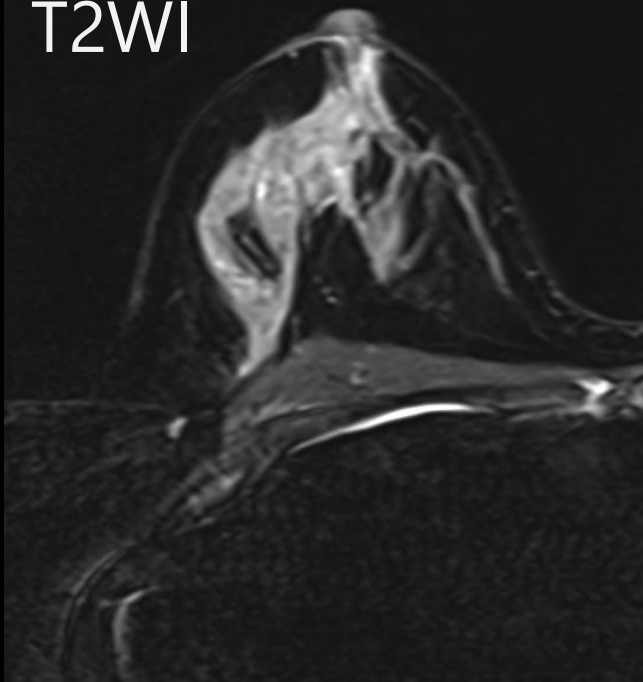
早期相 MIP



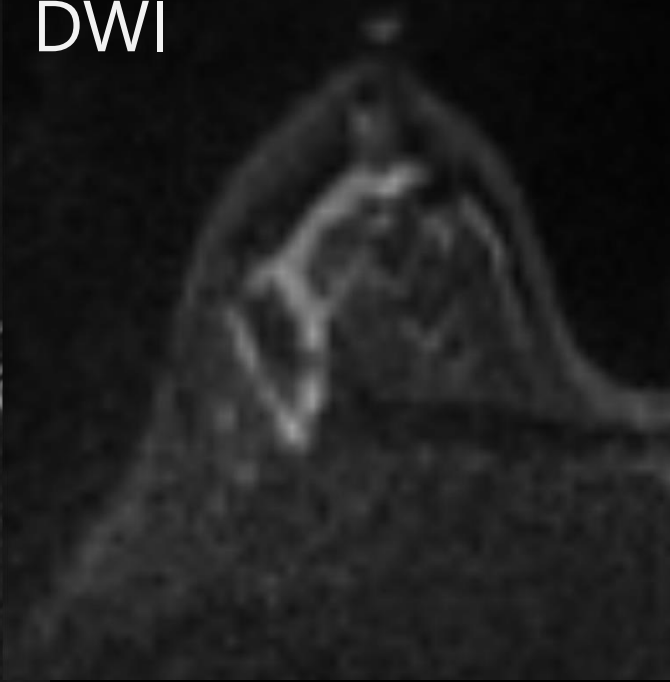
超早期相 MIP



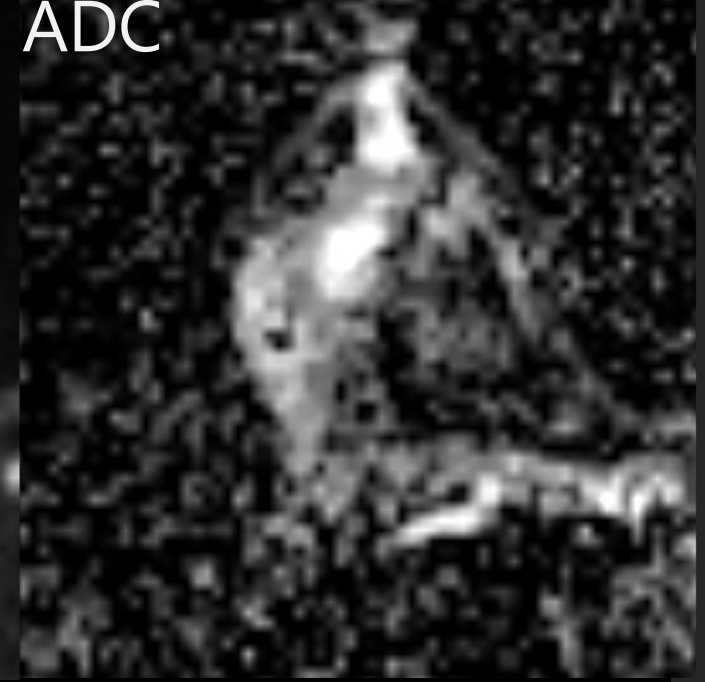
T2WI



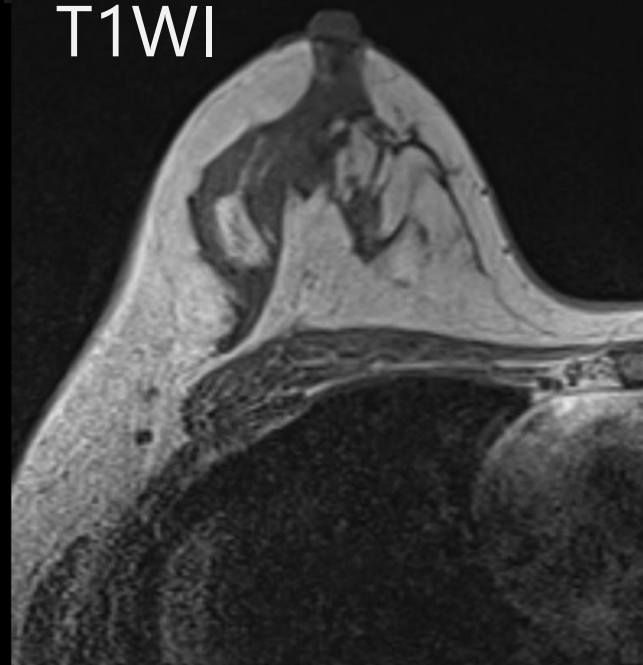
DWI



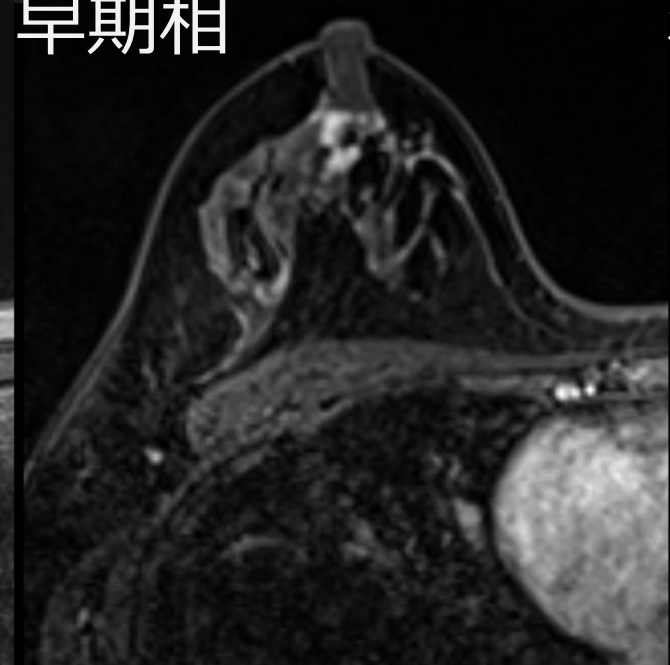
ADC



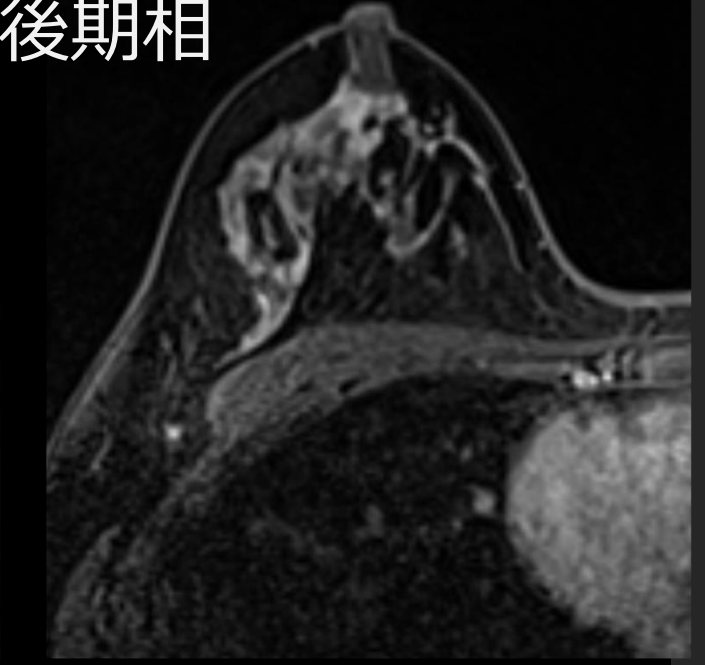
T1WI



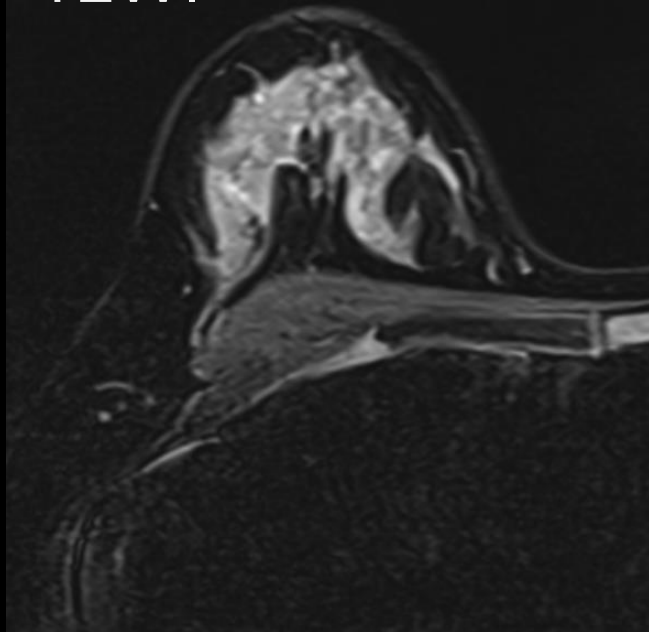
早期相



後期相



T2WI



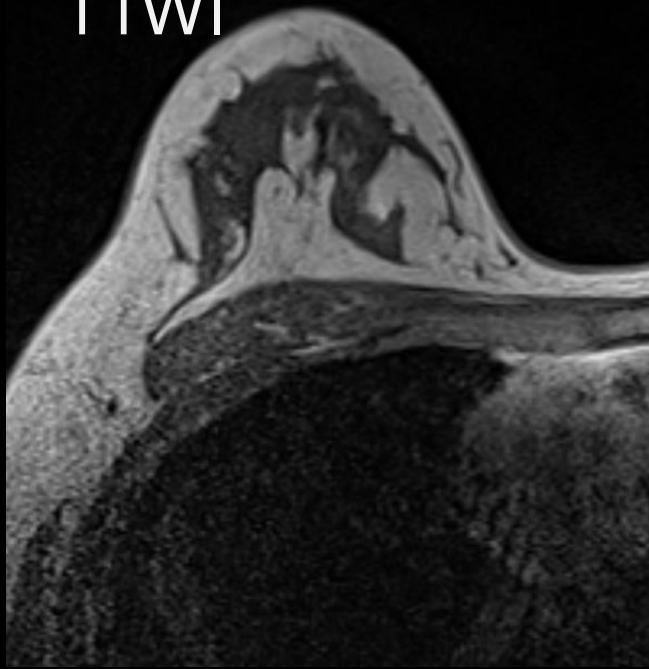
DWI



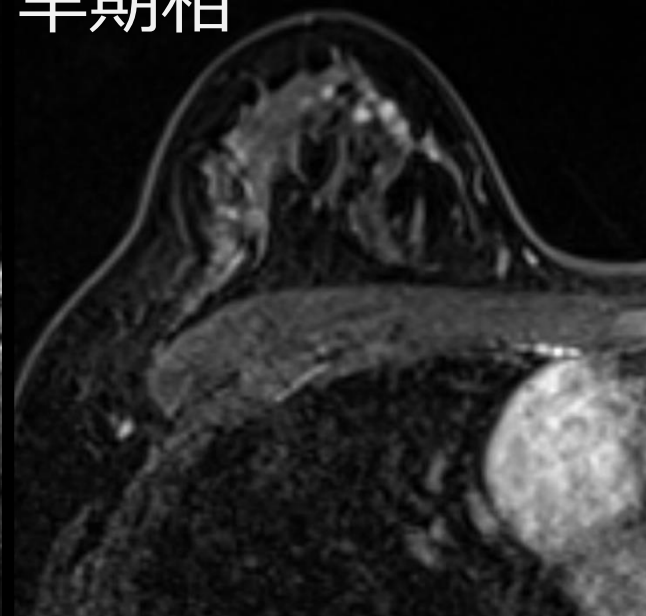
ADC



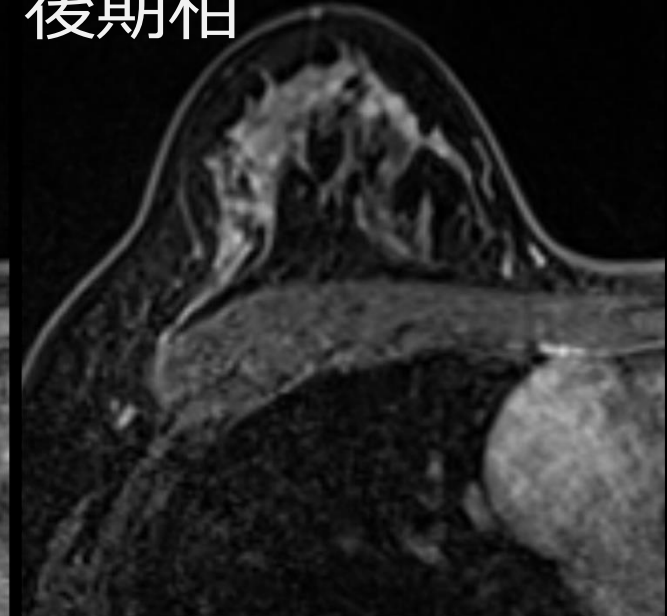
T1WI



早期相



後期相



Case 3: 50代女性 検診USで異常を指摘

- 既往歴：なし
- HBOC家族歴：なし
- 未閉経、妊娠・出産歴なし



- Q3-1：MMGの所見を述べてください。
- Q3-2：MRI早期相MIPでBPEを判定してください。
- Q3-3：MRI早期相MIPで病変を指摘してください。
- Q3-4：MRIから乳頭温存は可能でしょうか？

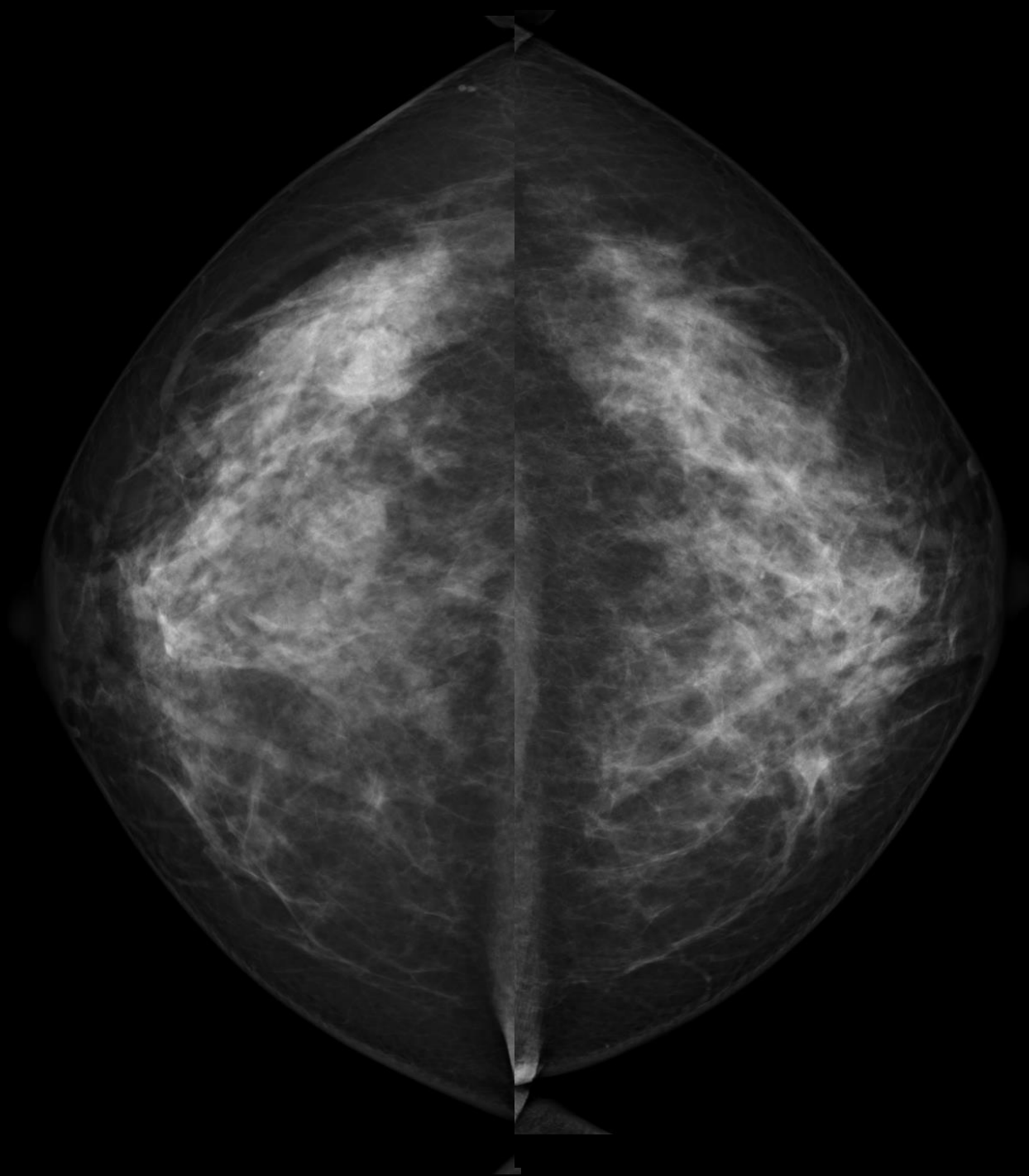
R MLO



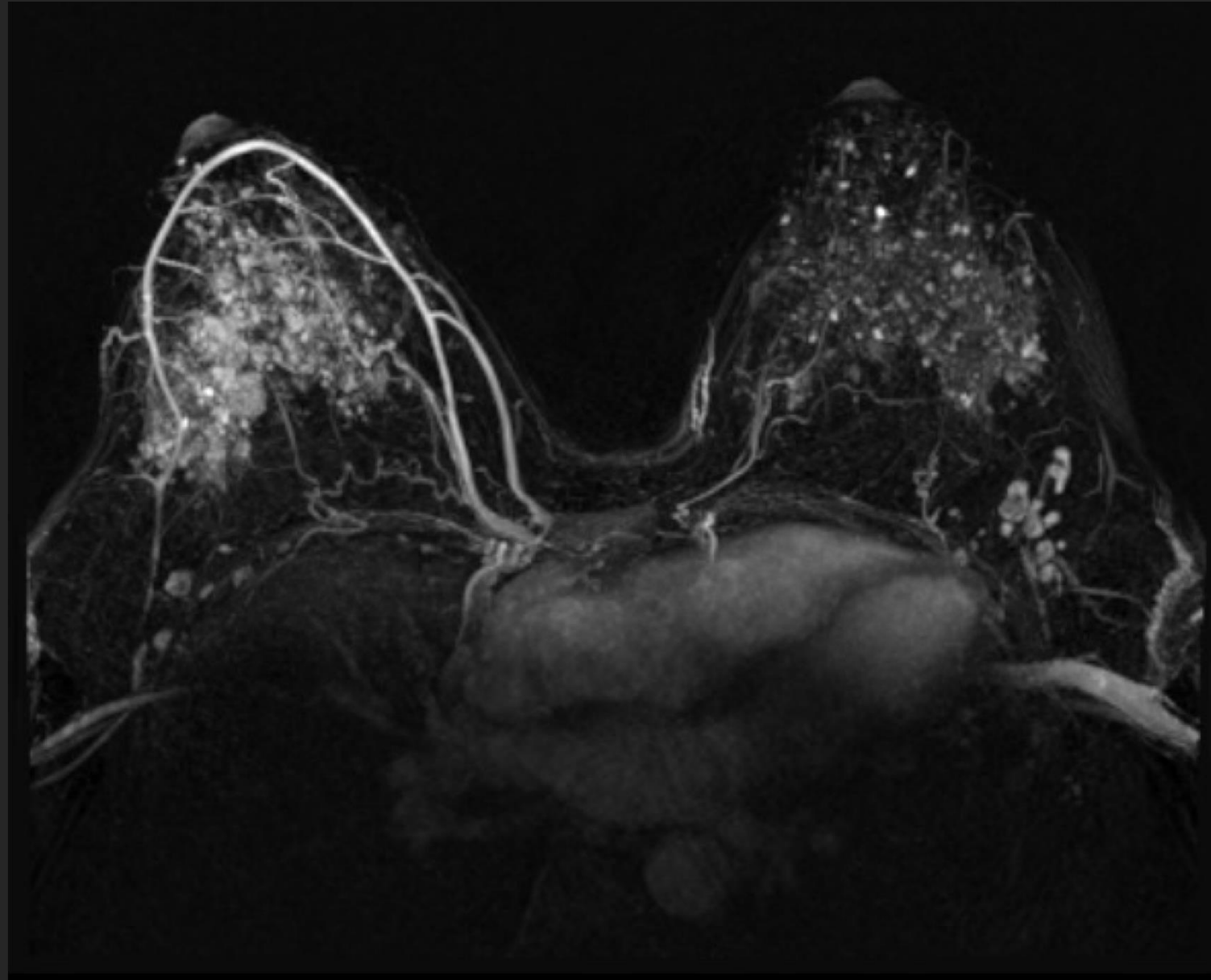
L MLO

R cc

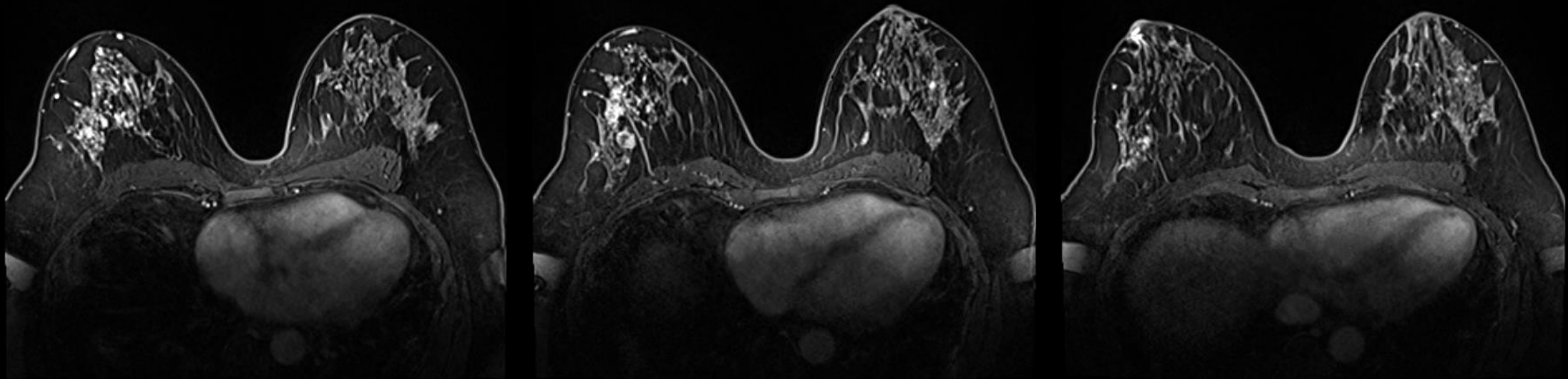
L cc



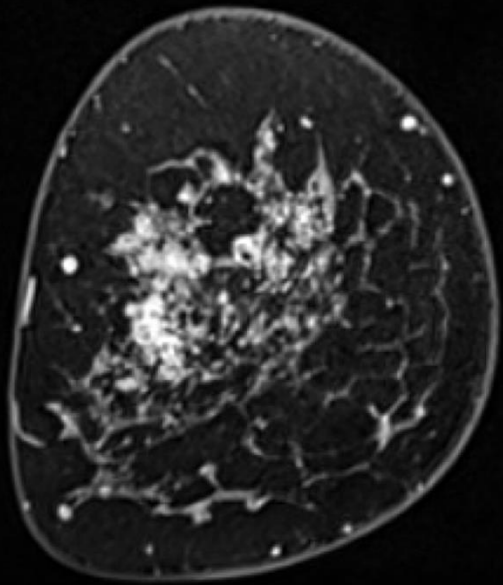
早期相 MIP



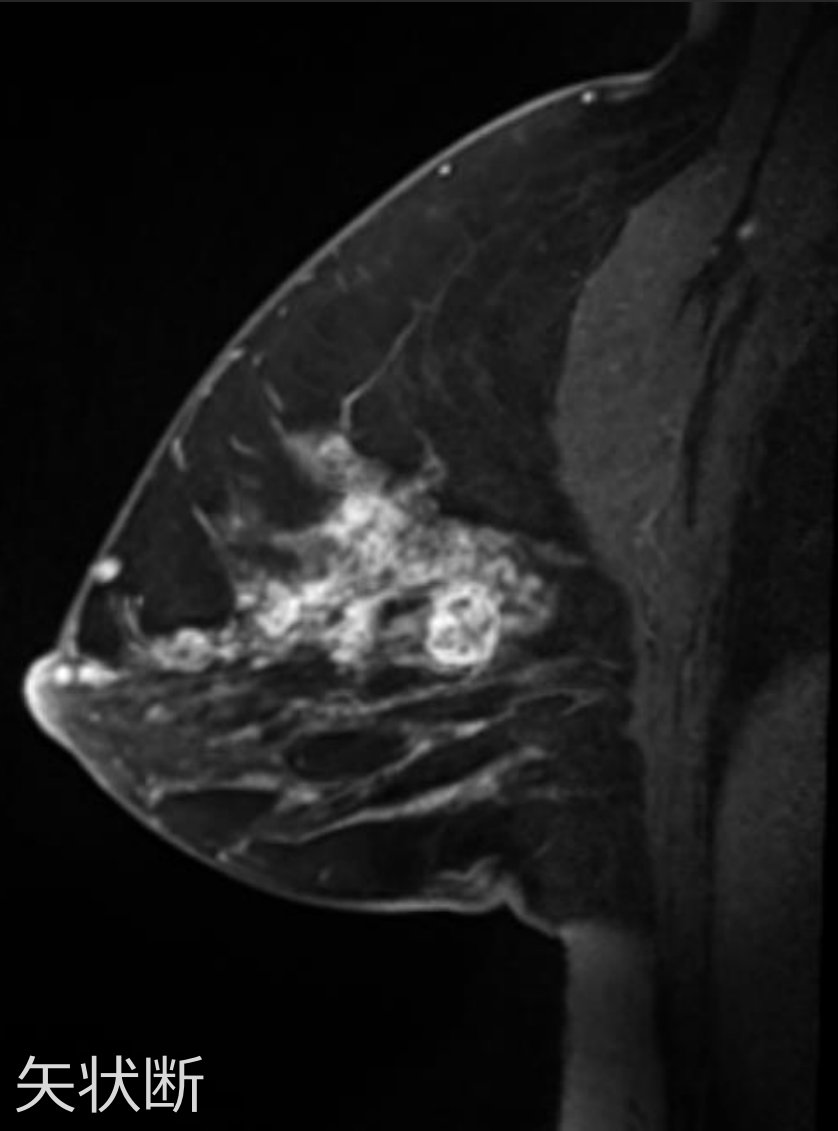
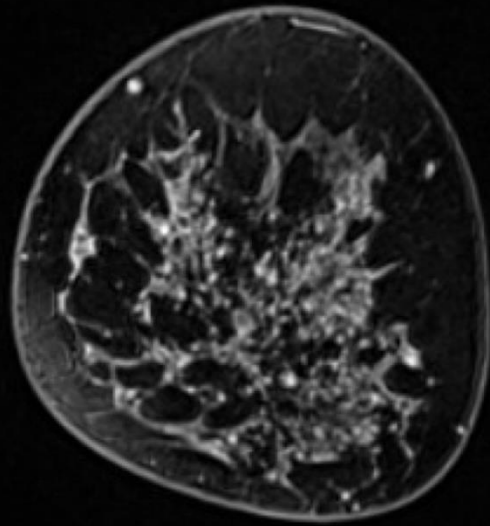
早期相



高空間分解能MRI (造影後2-5分)

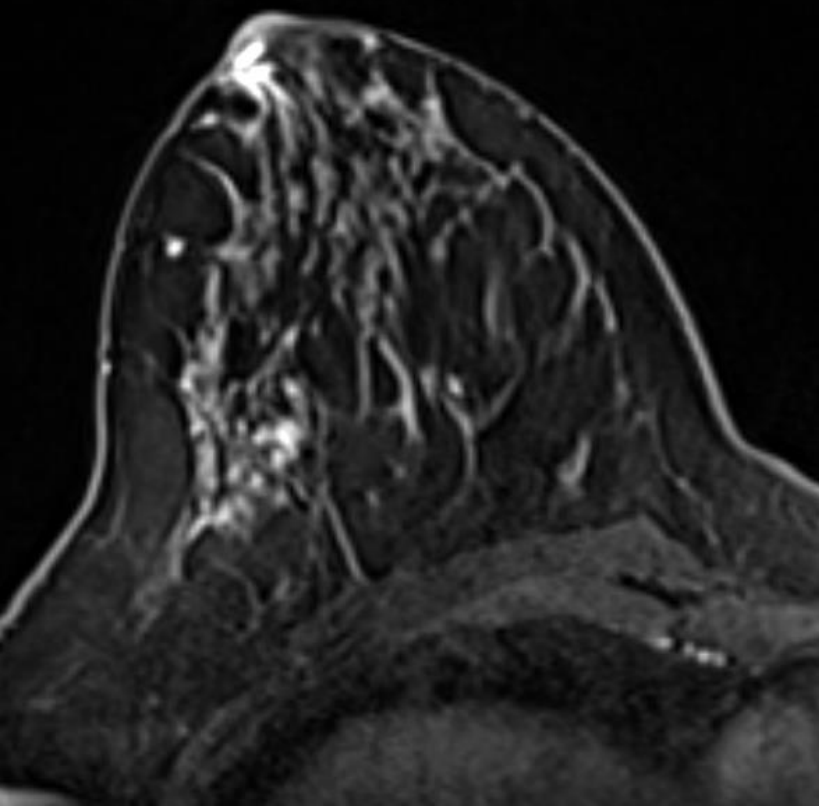


冠状断

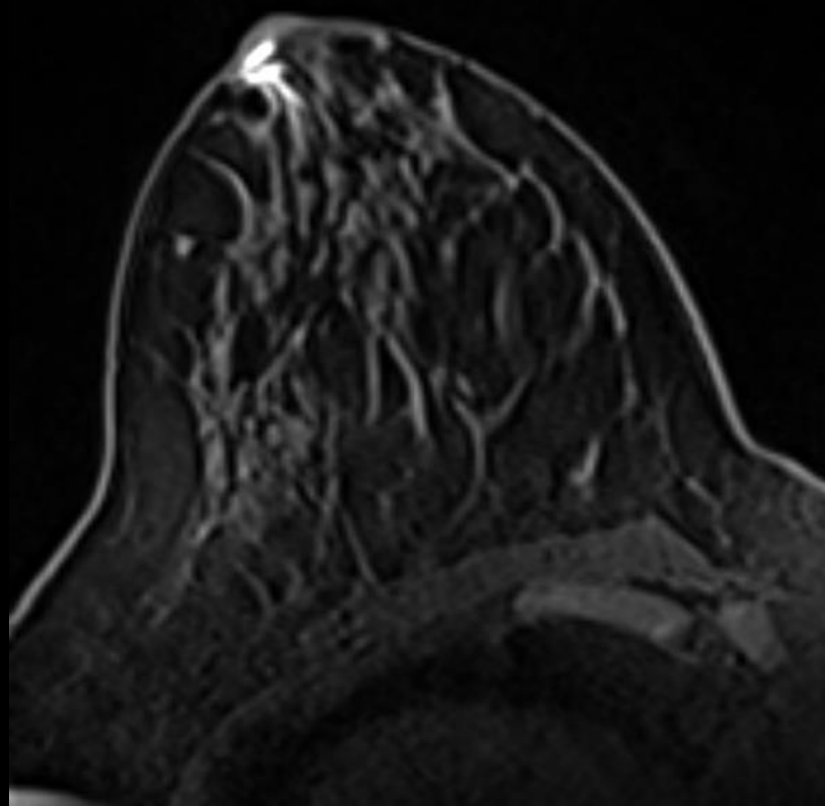


矢状断

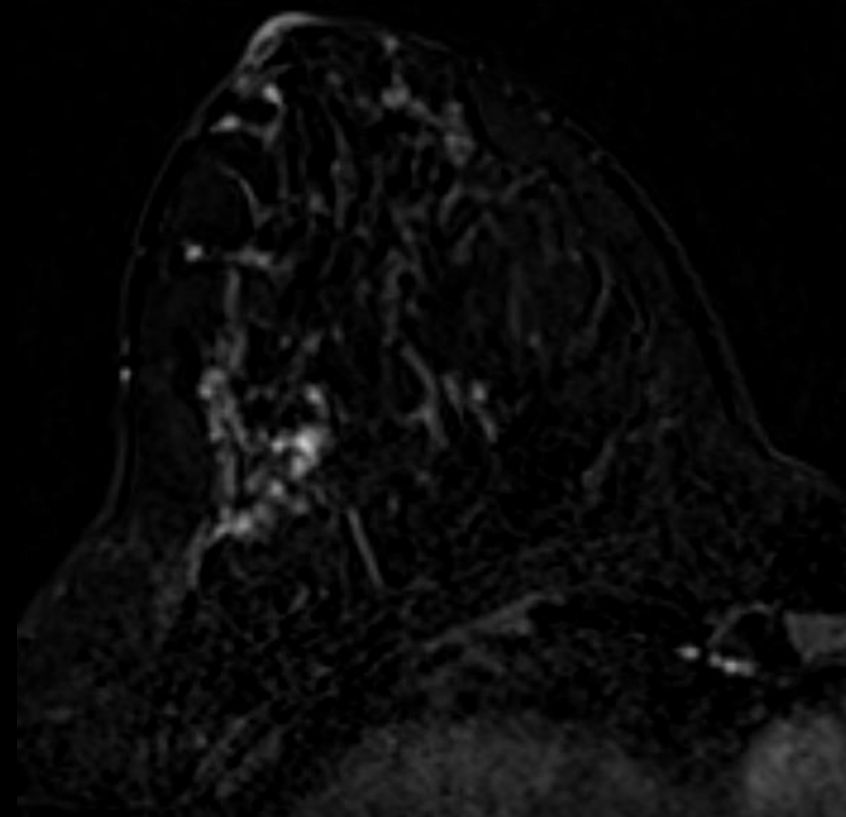
早期相



Pre



Subtraction

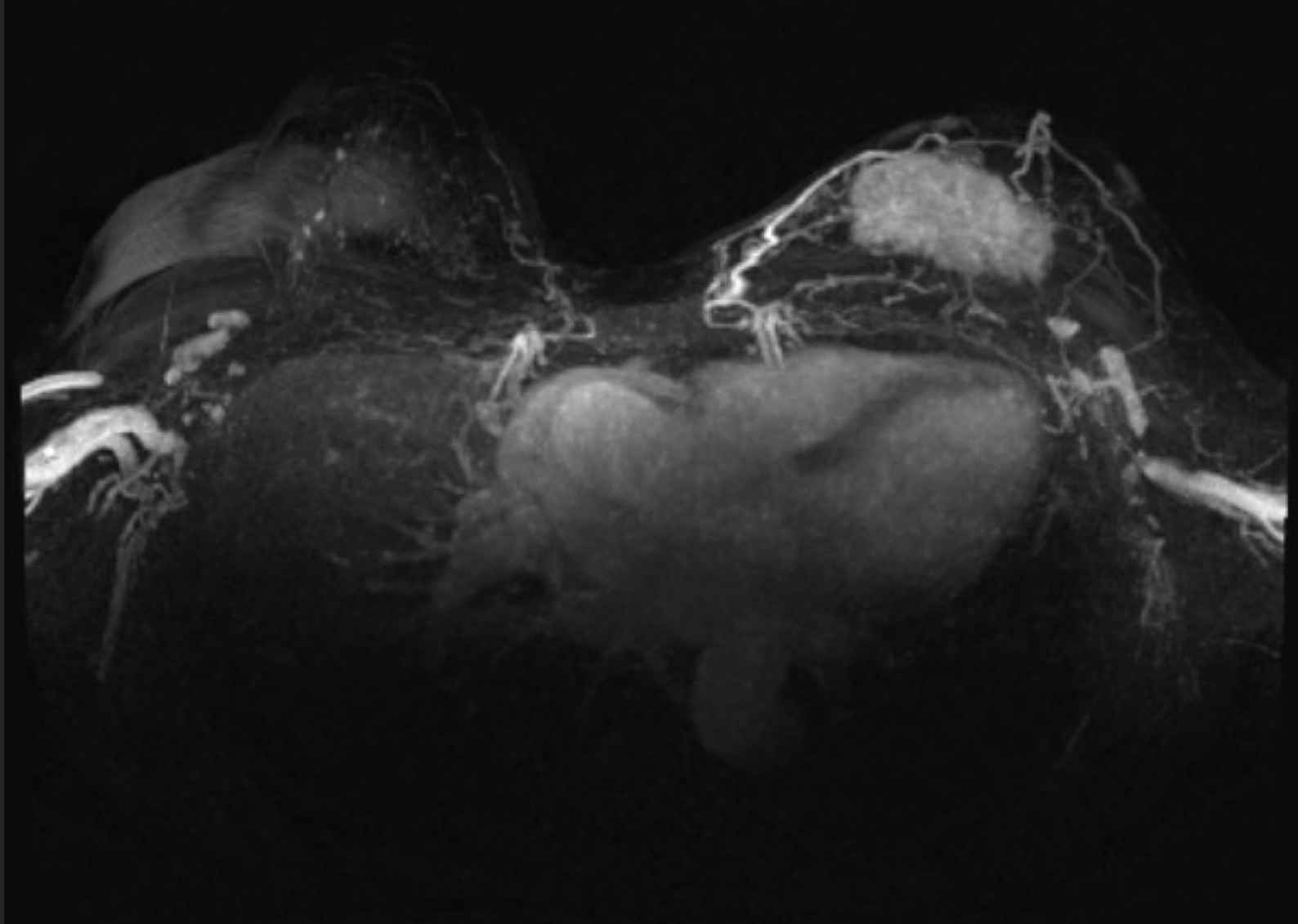


Case 4: 60代女性 1年前から左乳房腫瘍を自覚

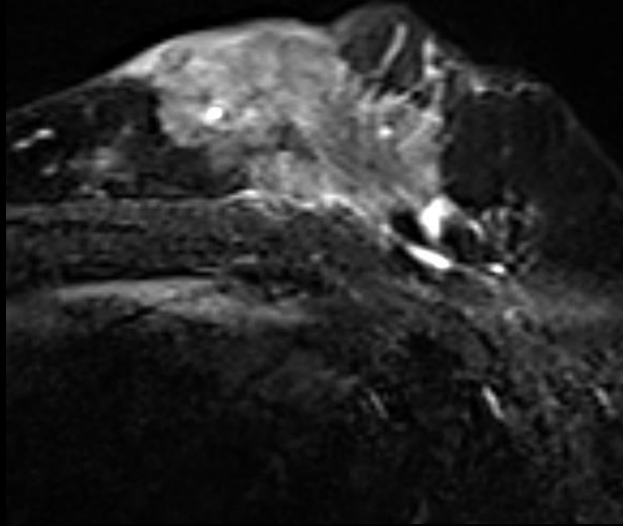
- 既往歴：両側大腿骨頭置換術
- HBOC家族歴：なし
- 妊娠・出産歴なし

- Q4-1：乳頭浸潤・大胸筋浸潤はありますか？
- Q4-2：NAC治療効果を判定してください。

NAC前 早期相 MIP



T2WI



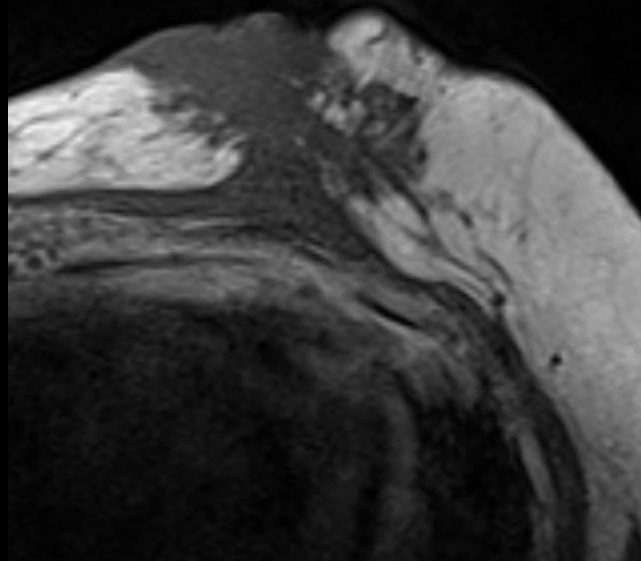
DWI



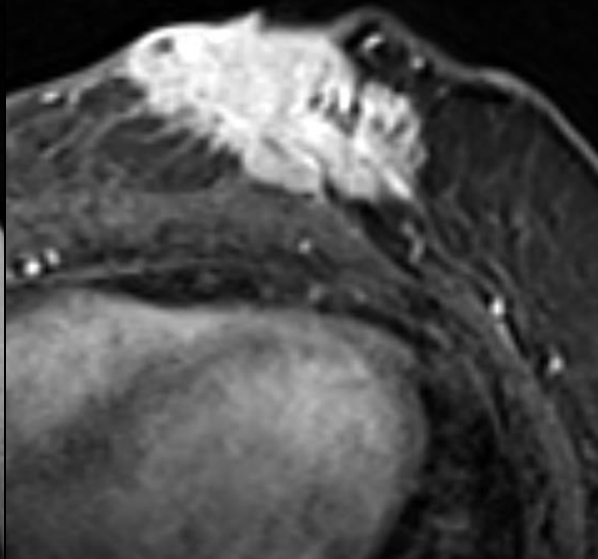
ADC



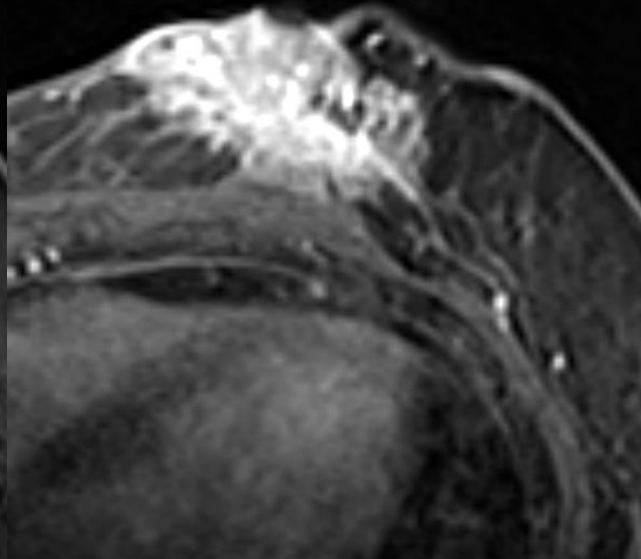
T1WI



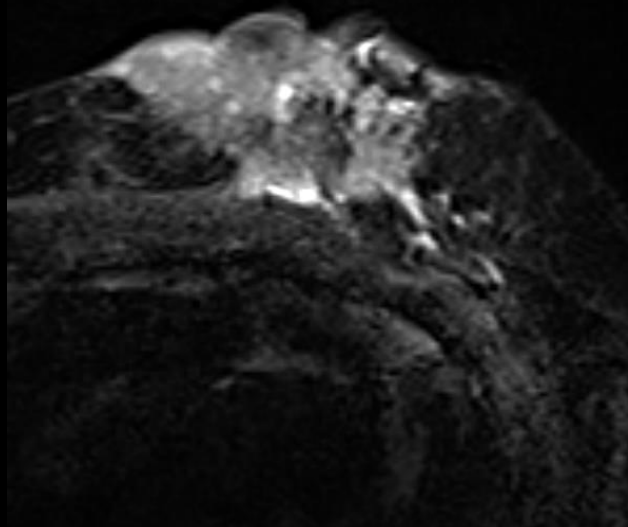
早期相



後期相



T2WI



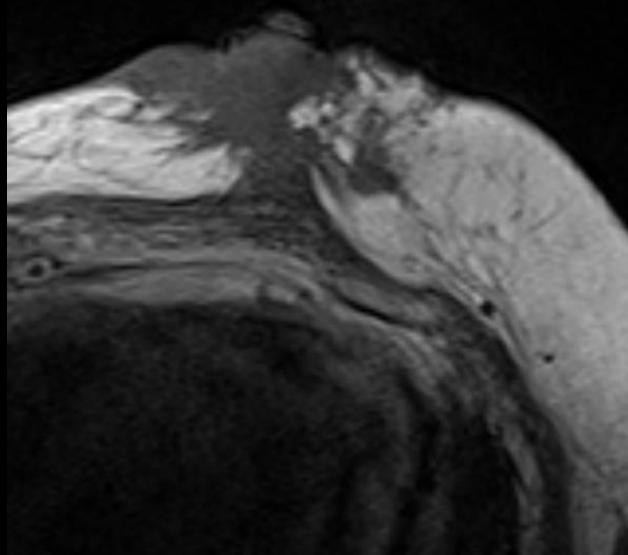
DWI



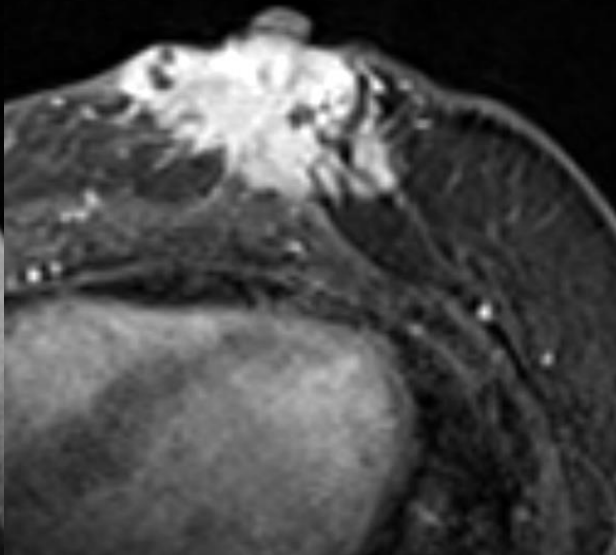
ADC



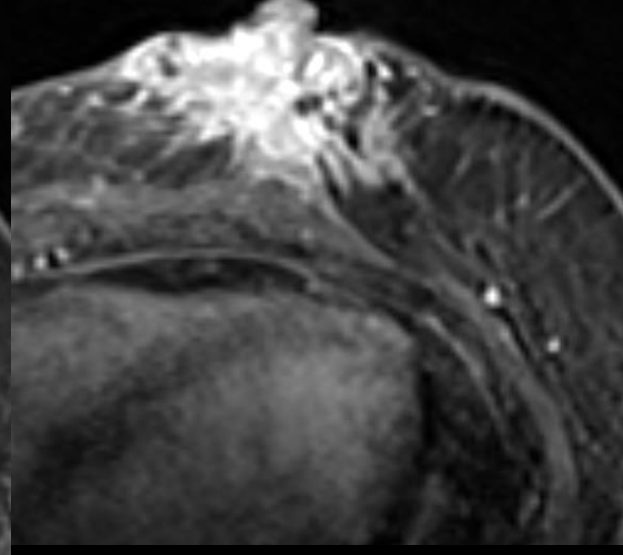
T1WI



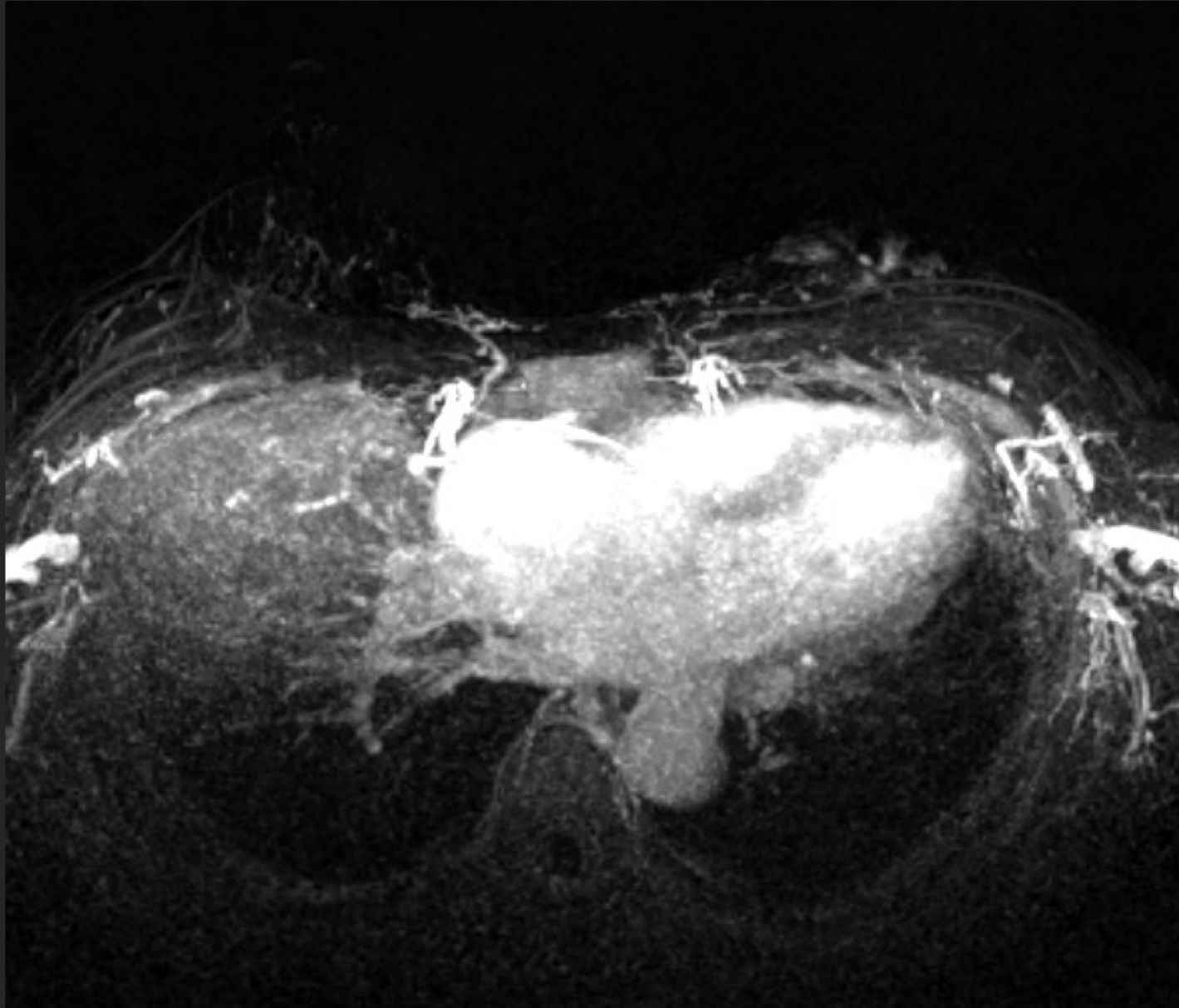
早期相



後期相



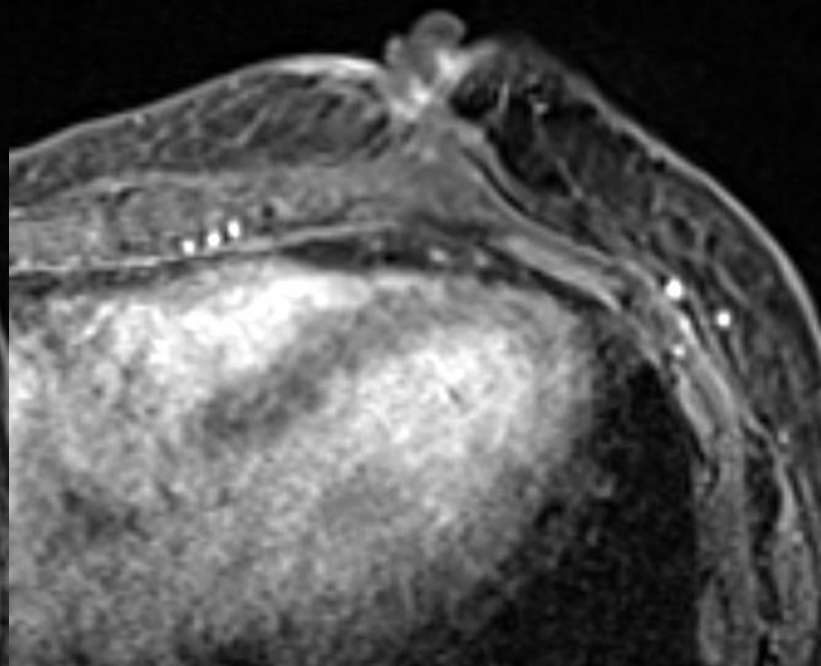
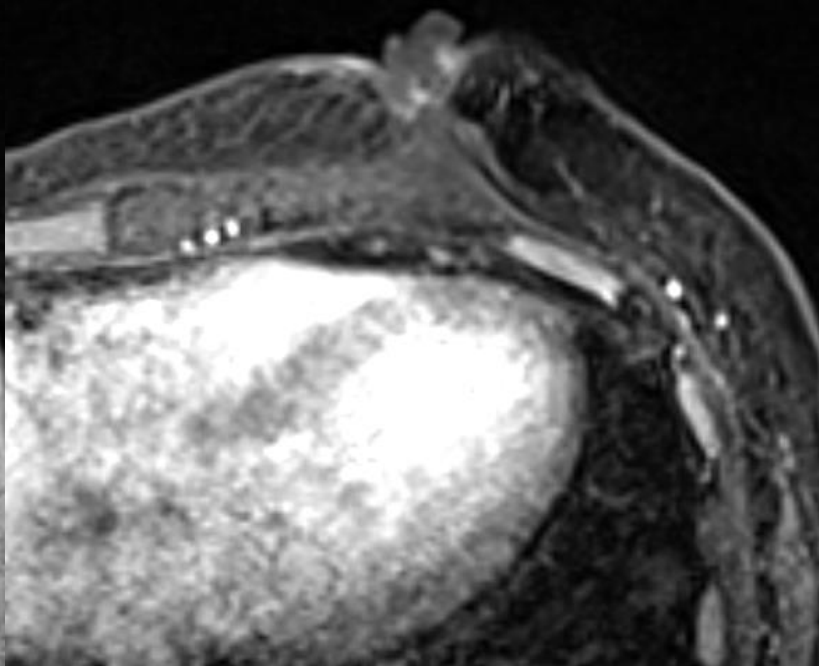
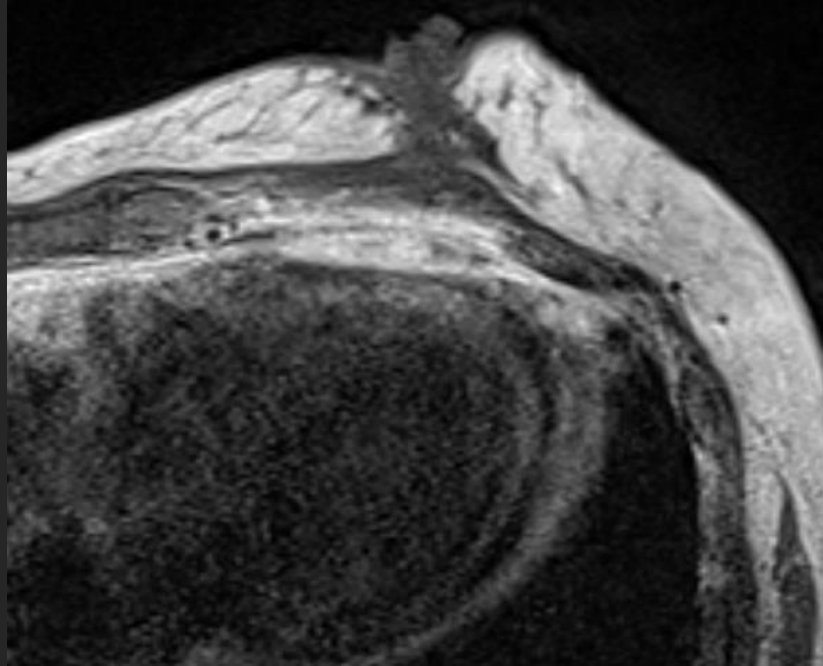
NAC後 早期相MIP



T1WI

早期相

後期相



T1WI

早期相

後期相

